

TOTAL STAGE WIDTH
24402mm
14835mm

PROSCENIUM OPENING
11635mm

L.S.#	DISTANCE
32	11125mm
31	10770mm
30	10465mm
29	10082mm
28	9703mm
27	9347mm
26	8960mm
25	8630mm
24	8274mm
23	7952mm
22	7233mm
21	6909mm
20	6604mm
19	6267mm
18	5931mm
17	5607mm
16	5290mm
15	4983mm
14	4616mm
13	4286mm
12	3956mm
11	3302mm
10	2897mm
9	2692mm
8	2492mm
7	2302mm
6	1778mm
5	1473mm
4	1168mm
3	857mm
2	552mm
1	278mm
SL	1000mm

**MAX CAPACITY OF LINESETS: 454 KILOS (EVENLY DISTRIBUTED LOAD) *LINESETS OPERATE FROM SL FLY FLOOR
*LINESETS ARE AUTOMATED TYPICAL TRUSS BATTON.

SOUND

Center Cluster Array:
10x D7B T10 cabinets
SL & SR Upper Boxes:
H1 Q10
SL & SR Lower Boxes:
H1 E8
SL & SR Balcony:
H1 Q7
Under Balcony:
SE 8S

COLOR KEY

- LX POSITIONS
- MOBILE UNITS
- SOUND POSITIONS
- HATCH

**PLEASE CHECK ALL CRITICAL DIMENSIONS ON SITE. *PLEASE ALLOW 3" VARIANCE ON ALL DIMENSIONS. *PLEASE ALLOW 6" AROUND ALL DECORATIVE AND CURVED ELEMENTS OF THE THEATRE.

GROUND PLAN
ORCHESTRA

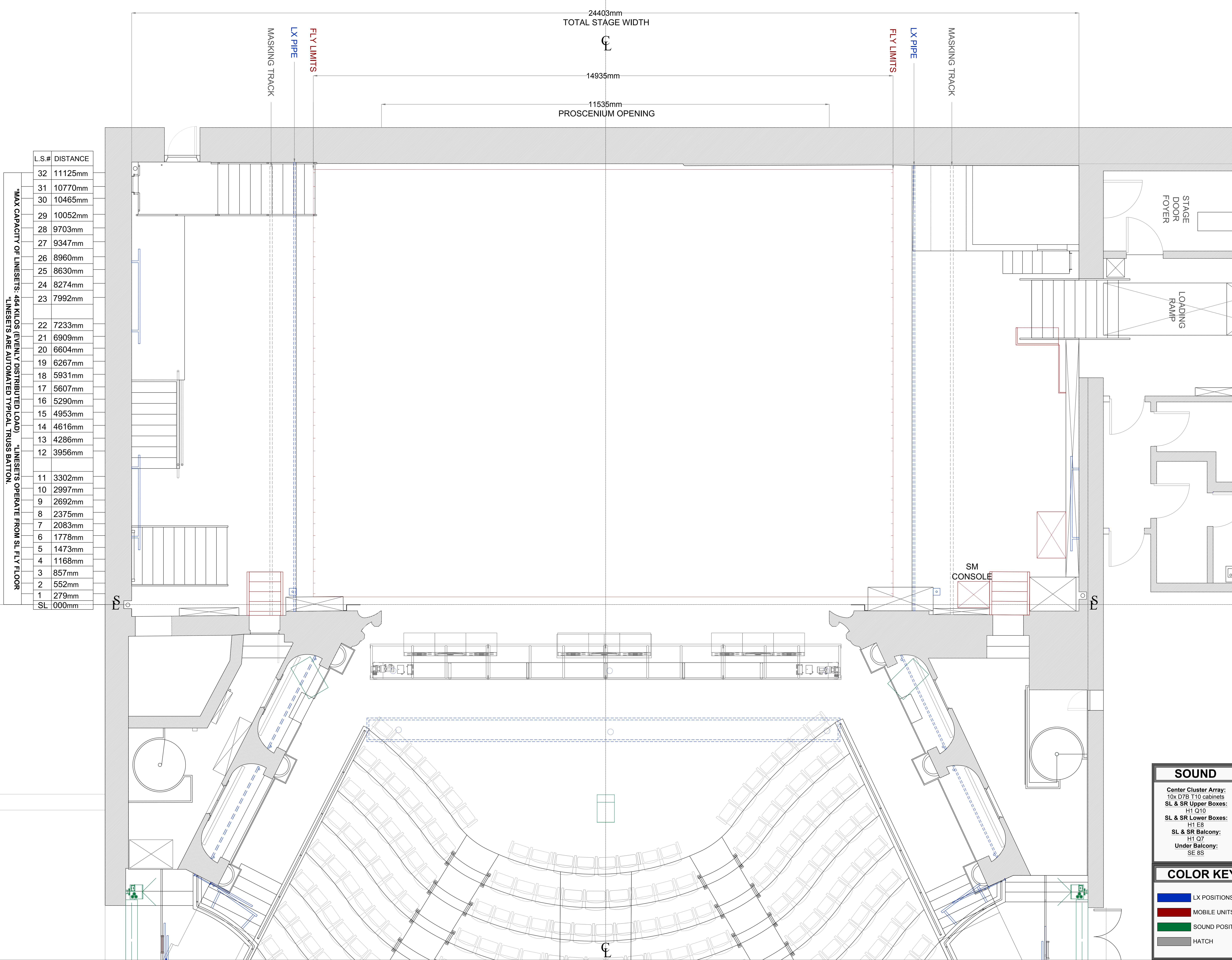
SCALE: 1:50
REVISED: 19 DECEMBER 2015 jif

HARVEY THEATER

651 Fulton Street, Brooklyn, NY 11217

BAM

**PLEASE CHECK ALL CRITICAL DIMENSIONS ON SITE. *PLEASE ALLOW 3" VARIANCE ON ALL DIMENSIONS. *PLEASE ALLOW 6" AROUND ALL DECORATIVE AND CURVED ELEMENTS OF THE THEATRE.



L.S.#	DISTANCE
32	11125mm
31	10770mm
30	10465mm
29	10052mm
28	9703mm
27	9347mm
26	8960mm
25	8630mm
24	8274mm
23	7992mm
22	7233mm
21	6909mm
20	6604mm
19	6267mm
18	5931mm
17	5607mm
16	5290mm
15	4953mm
14	4616mm
13	4286mm
12	3956mm
11	3302mm
10	2997mm
9	2692mm
8	2375mm
7	2083mm
6	1778mm
5	1473mm
4	1168mm
3	857mm
2	552mm
1	279mm
SL	000mm

*MAX CAPACITY OF LINESETS: 454 KILOS (EVENLY DISTRIBUTED LOAD) *LINESETS OPERATE FROM SL FLY FLOOR.
 *LINESETS ARE AUTOMATED TYPICAL TRUSS BATTON.

SOUND

Center Cluster Array:
10x D7B T10 cabinets

SL & SR Upper Boxes:
H1 Q10

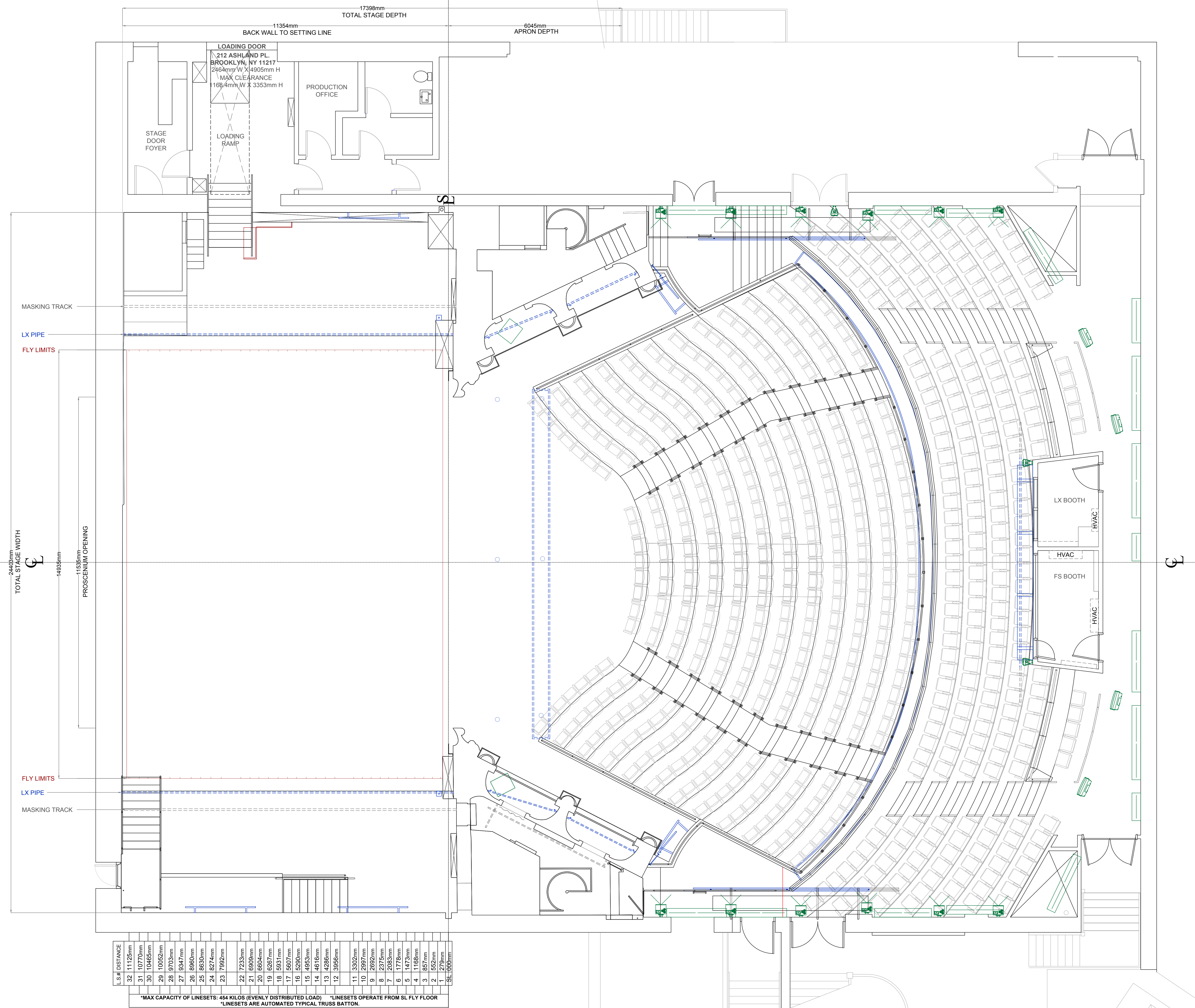
SL & SR Lower Boxes:
H1 E9

SL & SR Balcony:
H1 Q7

Under Balcony:
SE 8S

COLOR KEY

- LX POSITIONS
- MOBILE UNITS
- SOUND POSITIONS
- HATCH



L.S.#	DISTANCE	MAX CAPACITY OF LINESETS: 454 KILOS (EVENLY DISTRIBUTED LOAD)	*LINESETS OPERATE FROM SL FLY FLOOR
32	11125mm		*LINESETS ARE AUTOMATED TYPICAL TRUSS BATTON.
31	10770mm		
30	10465mm		
29	10052mm		
28	9703mm		
27	9347mm		
26	8960mm		
25	8630mm		
24	8274mm		
23	7992mm		
22	7233mm		
21	6909mm		
20	6604mm		
19	6267mm		
18	5931mm		
17	5607mm		
16	5290mm		
15	4953mm		
14	4610mm		
13	4286mm		
12	3956mm		
11	3302mm		
10	2997mm		
9	2692mm		
8	2375mm		
7	2058mm		
6	1778mm		
5	1472mm		
4	1168mm		
3	857mm		
2	278mm		
1	1000mm		

SOUND
 Center Cluster Array:
 10x D7B T10 cabinets
 SL & SR Upper Boxes:
 H1 Q10
 SL & SR Lower Boxes:
 H1 E8
 SL & SR Balcony:
 H1 Q7
 Under Balcony:
 SE 8S

COLOR KEY
 LX POSITIONS
 MOBILE UNITS
 SOUND POSITIONS
 HATCH

**PLEASE CHECK ALL CRITICAL DIMENSIONS ON SITE. *PLEASE ALLOW 3" VARIANCE ON ALL DIMENSIONS. *PLEASE ALLOW 6" AROUND ALL DECORATIVE AND CURVED ELEMENTS OF THE THEATRE.

GROUND PLAN
 BALCONY
 PLATE #

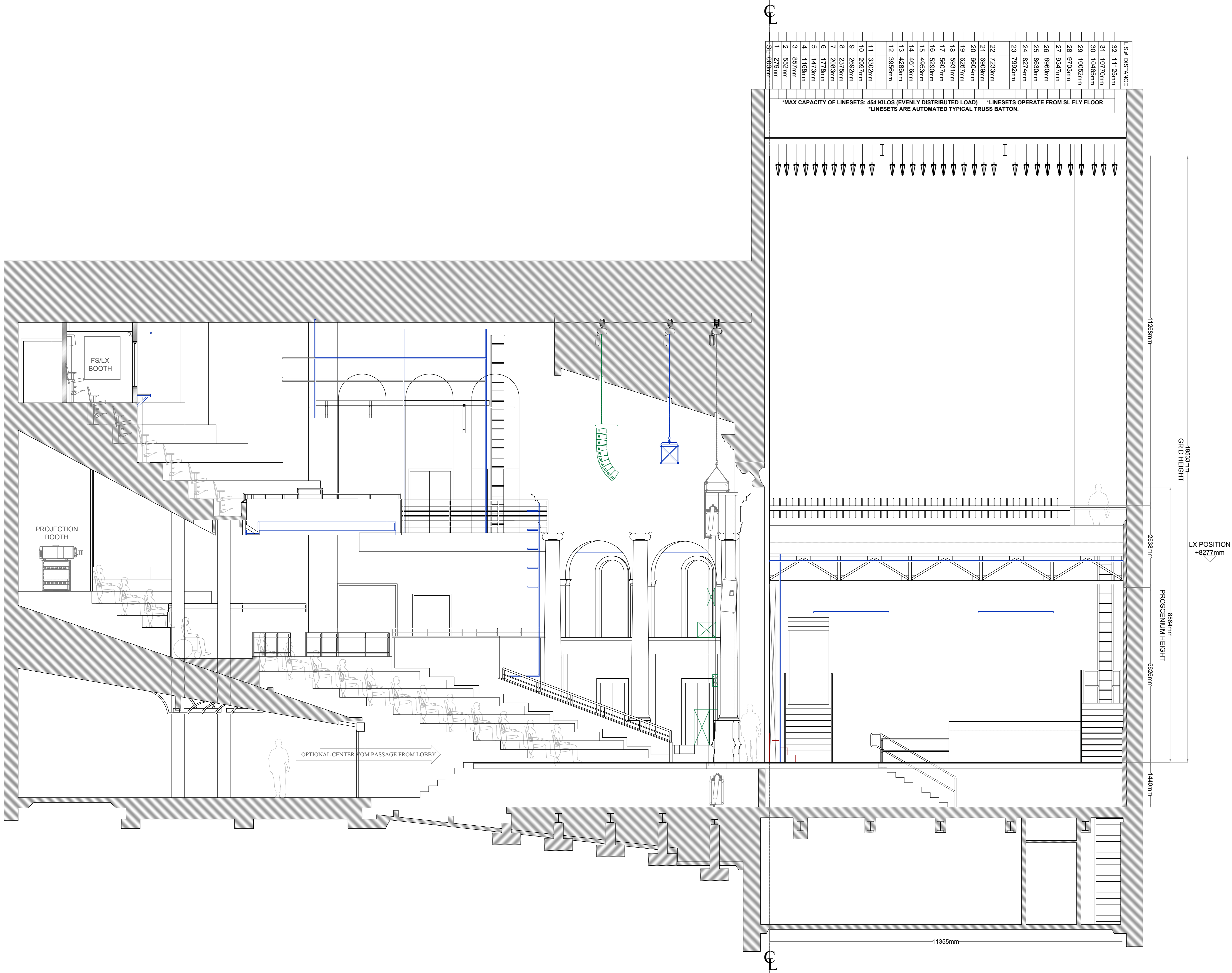
3 OF 9

HARVEY THEATER

651 Fulton Street, Brooklyn, NY 11217

SCALE: 1:50 REVISED: 19 DECEMBER 2015 jif

BAM



LS #	DISTANCE
32	11125mm
31	10770mm
30	10465mm
29	10050mm
28	9700mm
27	9347mm
26	8980mm
25	8630mm
24	8274mm
23	7982mm
22	7233mm
21	6690mm
20	6690mm
19	6287mm
18	5987mm
17	5690mm
16	5290mm
15	4983mm
14	4616mm
13	4286mm
12	3966mm
11	3302mm
10	2997mm
9	2692mm
8	2375mm
7	2053mm
6	1778mm
5	1458mm
4	1180mm
3	852mm
2	552mm
1	279mm
SL	1000mm

*MAX CAPACITY OF LINESETS: 454 KILOS (EVENLY DISTRIBUTED LOAD) *LINESETS OPERATE FROM SL FLY FLOOR
 *LINESETS ARE AUTOMATED TYPICAL TRUSS BATTON.

SOUND
 Center Cluster Array:
 10x D7B T10 cabinets
 SL & SR Upper Boxes:
 H1 Q10
 SL & SR Lower Boxes:
 H1 E8
 SL & SR Balcony:
 H1 Q7
 Under Balcony:
 SE 8S

COLOR KEY
 LX POSITIONS
 MOBILE UNITS
 SOUND POSITIONS
 HATCH

SECTION
 STAGE RIGHT
 PLATE #

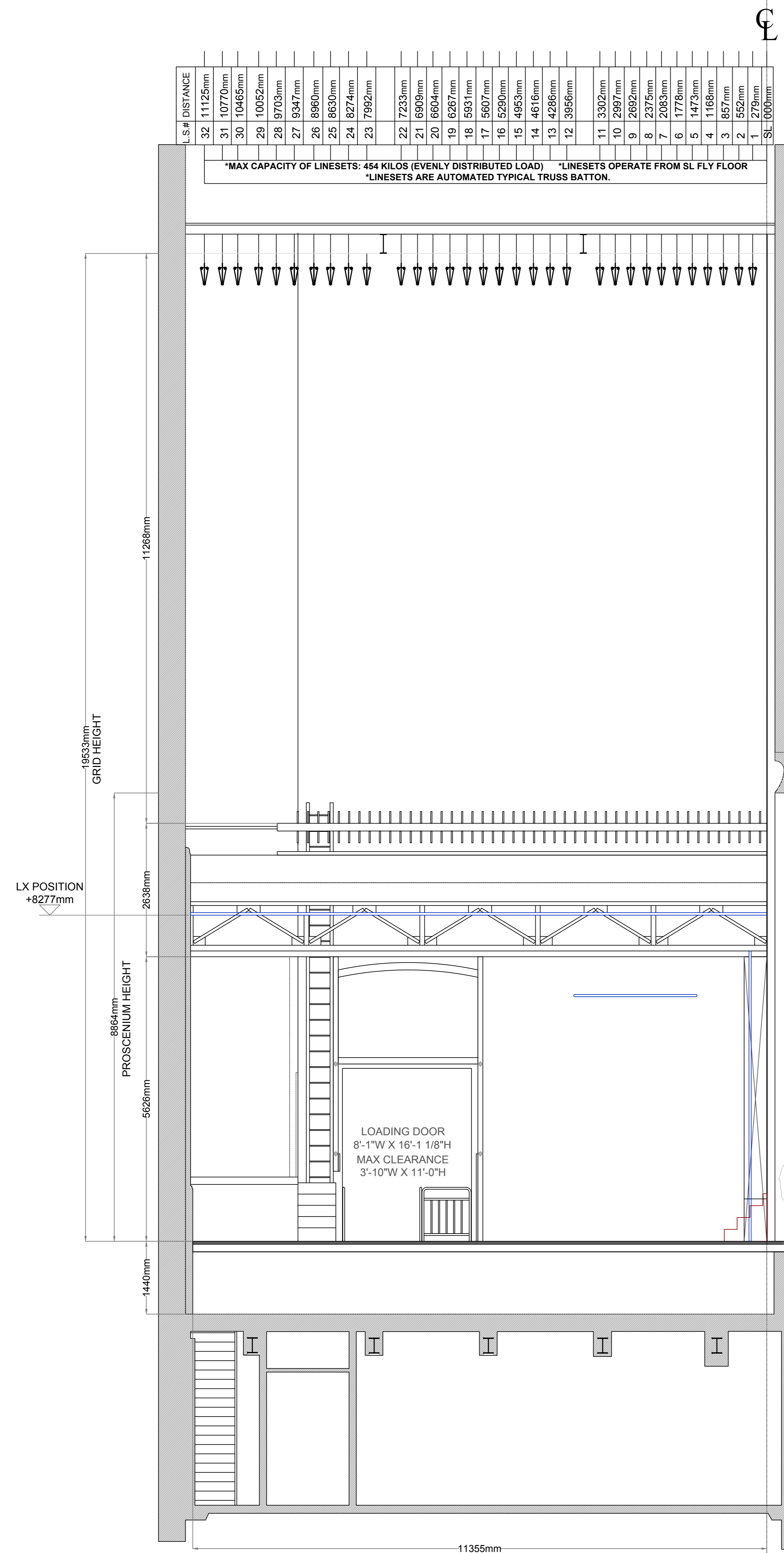
4 OF 9

HARVEY THEATER
 651 Fulton Street, Brooklyn, NY 11217

BAM

SCALE: 1:50
 REVISED: 19 DECEMBER 2015 jif

**PLEASE CHECK ALL CRITICAL DIMENSIONS ON SITE. *PLEASE ALLOW 3" VARIANCE ON ALL DIMENSIONS. *PLEASE ALLOW 6" AROUND ALL DECORATIVE AND CURVED ELEMENTS OF THE THEATRE.



SOUND	
Center Cluster Array:	10x D7B, T10 cabinets
SL & SR Upper Boxes:	H1 Q10
SL & SR Lower Boxes:	H1 E8
SL & SR Balcony:	H1 Q7
Under Balcony:	SE 8S

COLOR KEY	
■	LX POSITIONS
■	MOBILE UNITS
■	SOUND POSITIONS
■	HATCH

**PLEASE CHECK ALL CRITICAL DIMENSIONS ON SITE. *PLEASE ALLOW 3" VARIANCE ON ALL DIMENSIONS. *PLEASE ALLOW 6" AROUND ALL DECORATIVE AND CURVED ELEMENTS OF THE THEATRE.

HARVEY THEATER

651 Fulton Street, Brooklyn, NY 11217

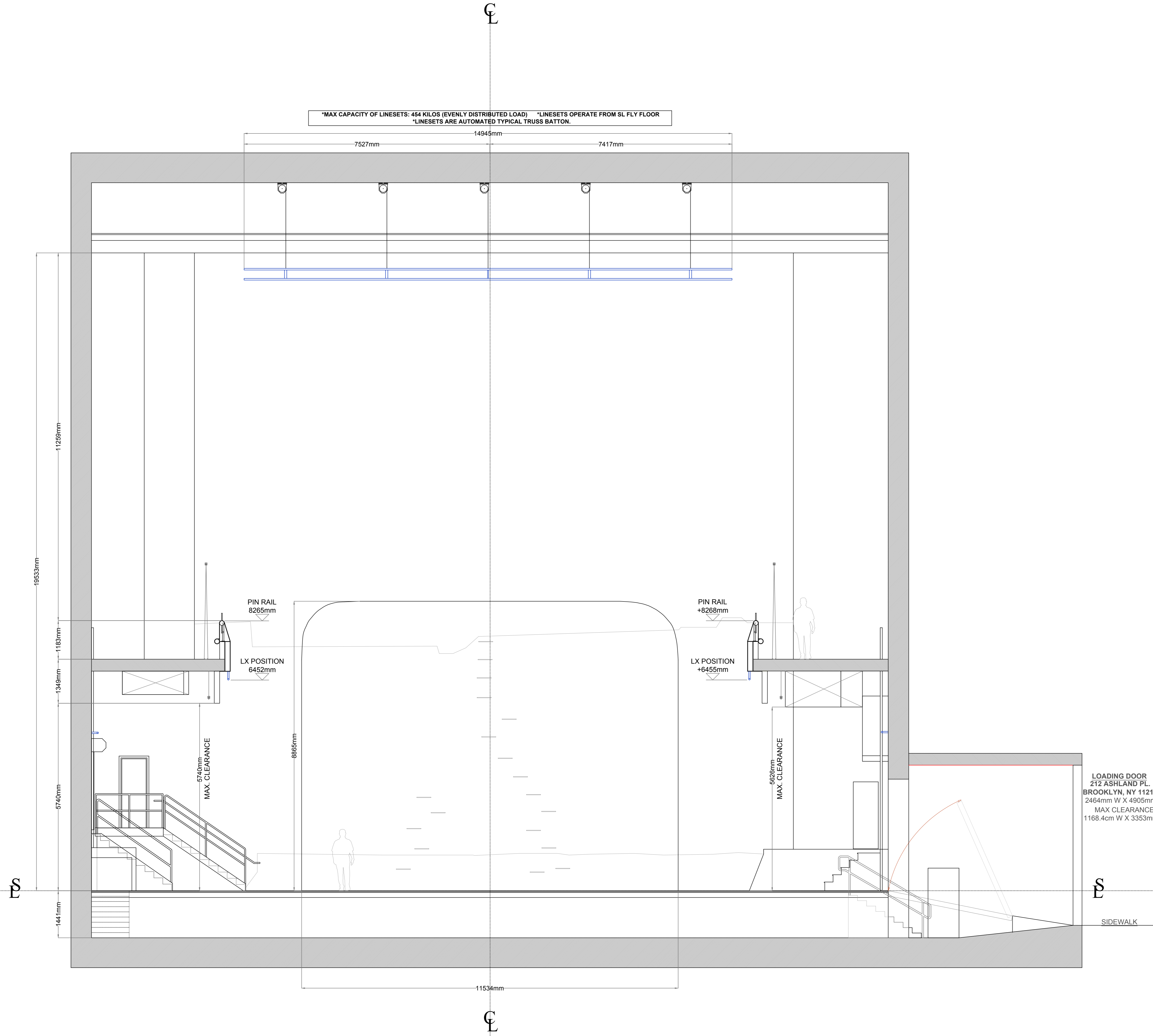
SECTION
STAGE LEFT

PLATE #

5 OF 9

SCALE: 1:50 REVISED: 19 DECEMBER 2015 jif

BAM



SOUND

Center Cluster Array:
 10x D7B T10 cabinets
SL & SR Upper Boxes:
 H1 Q10
SL & SR Lower Boxes:
 H1 E8
SL & SR Balcony:
 H1 Q7
Under Balcony:
 SE 8S

COLOR KEY

█ LX POSITIONS
█ MOBILE UNITS
█ SOUND POSITIONS
█ HATCH

**PLEASE CHECK ALL CRITICAL DIMENSIONS ON SITE. *PLEASE ALLOW 3" VARIANCE ON ALL DIMENSIONS. *PLEASE ALLOW 6" AROUND ALL DECORATIVE AND CURVED ELEMENTS OF THE THEATRE.

SECTION
 LATERAL
 PLATE
 #

6 OF 9

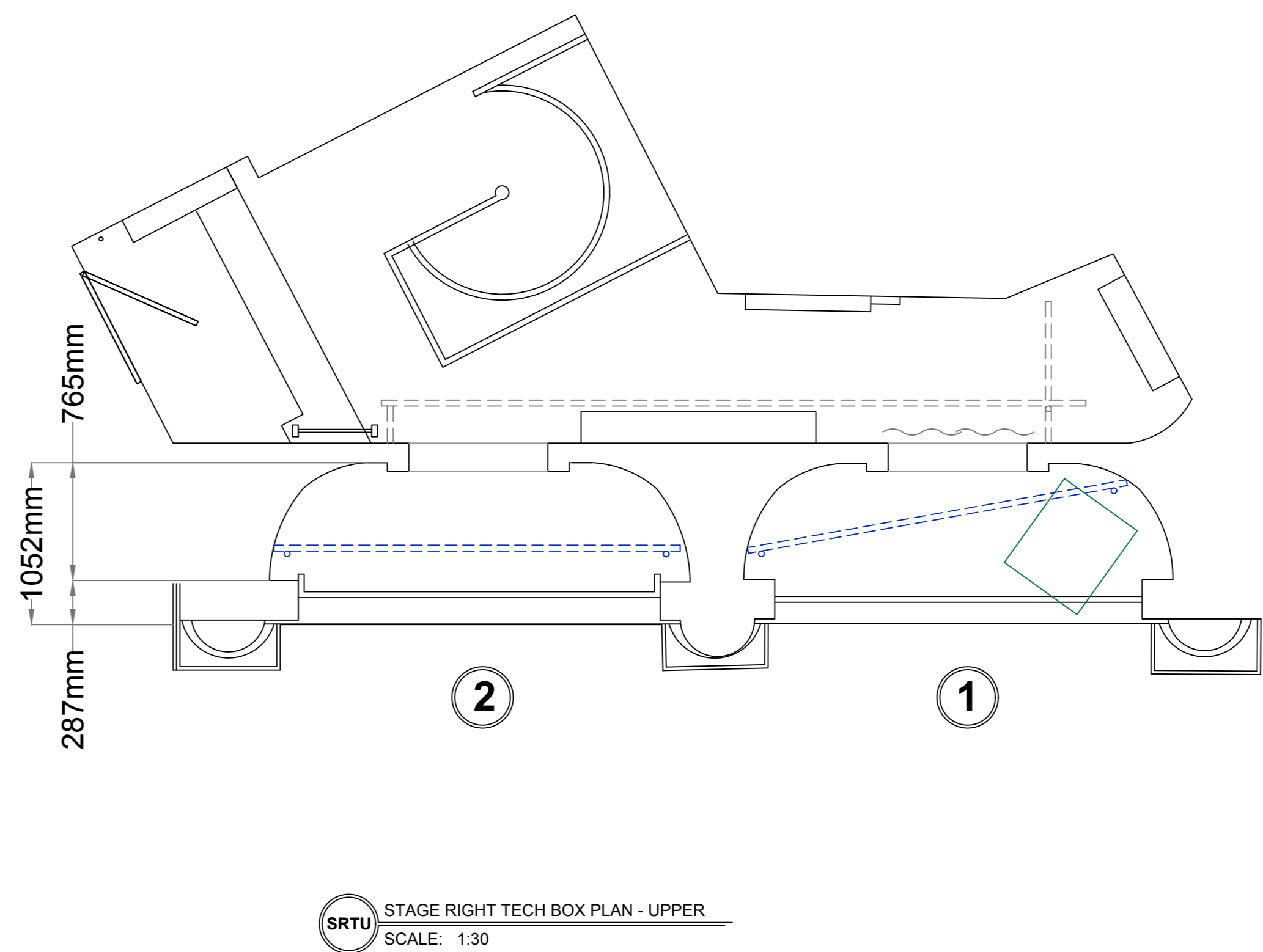
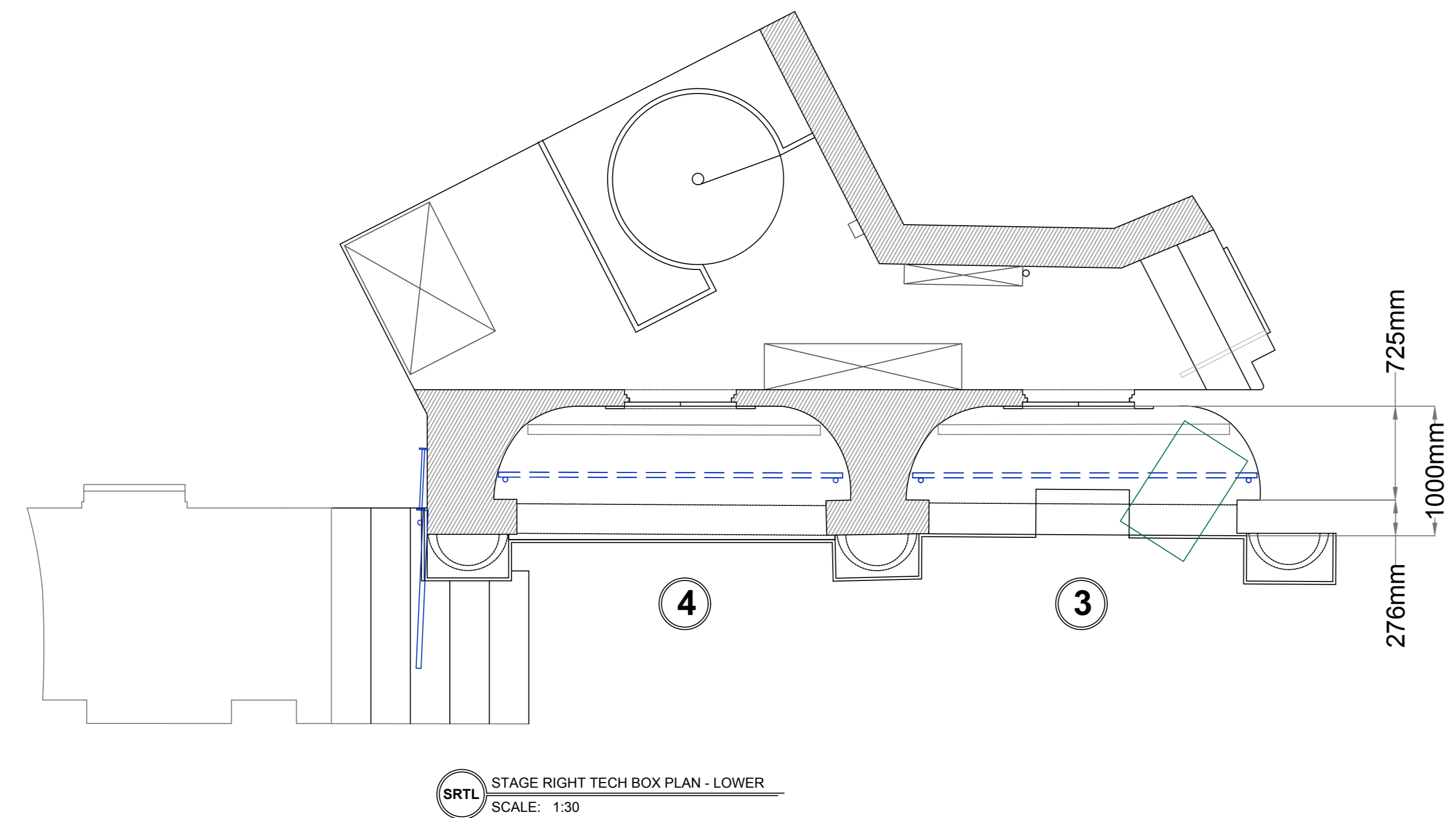
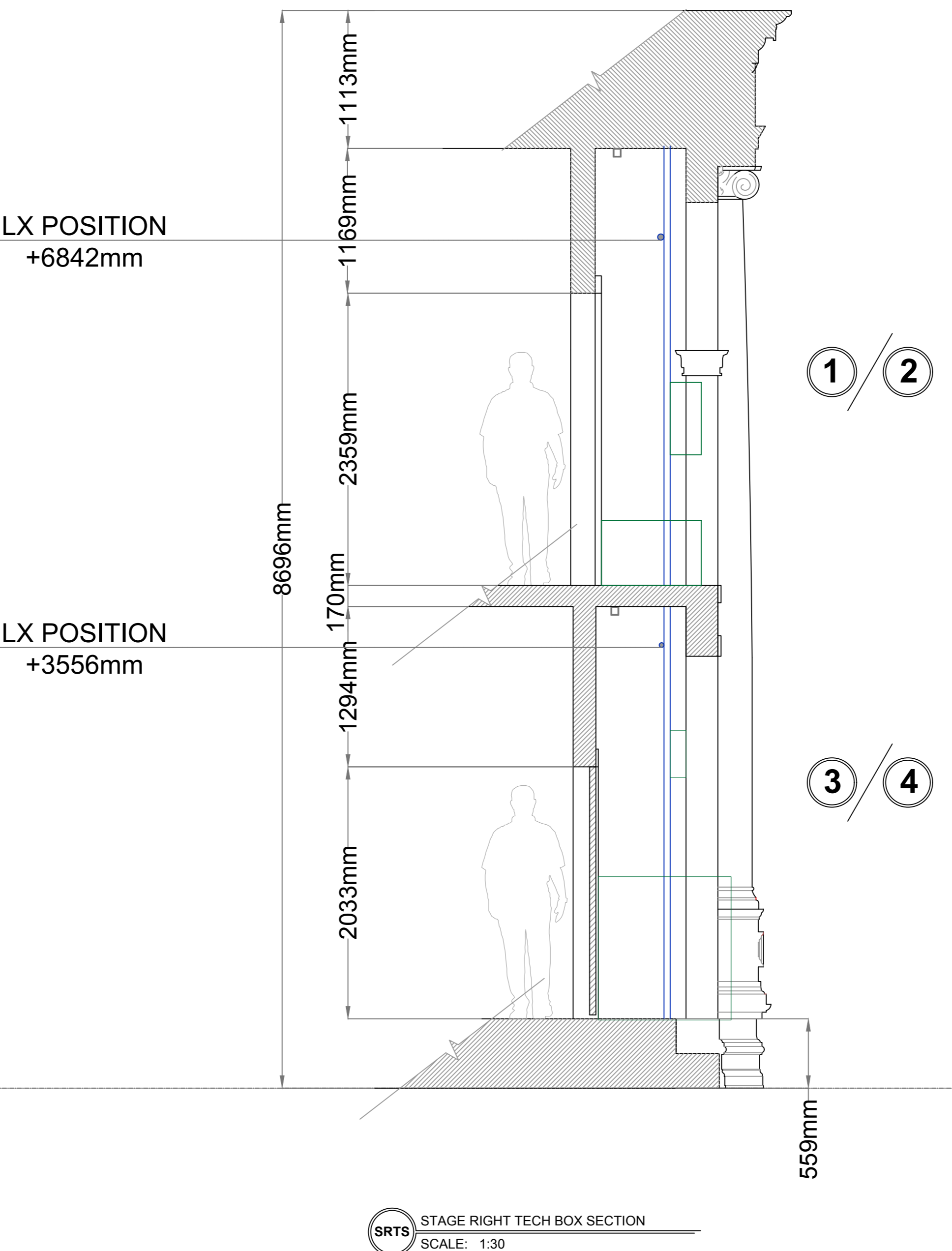
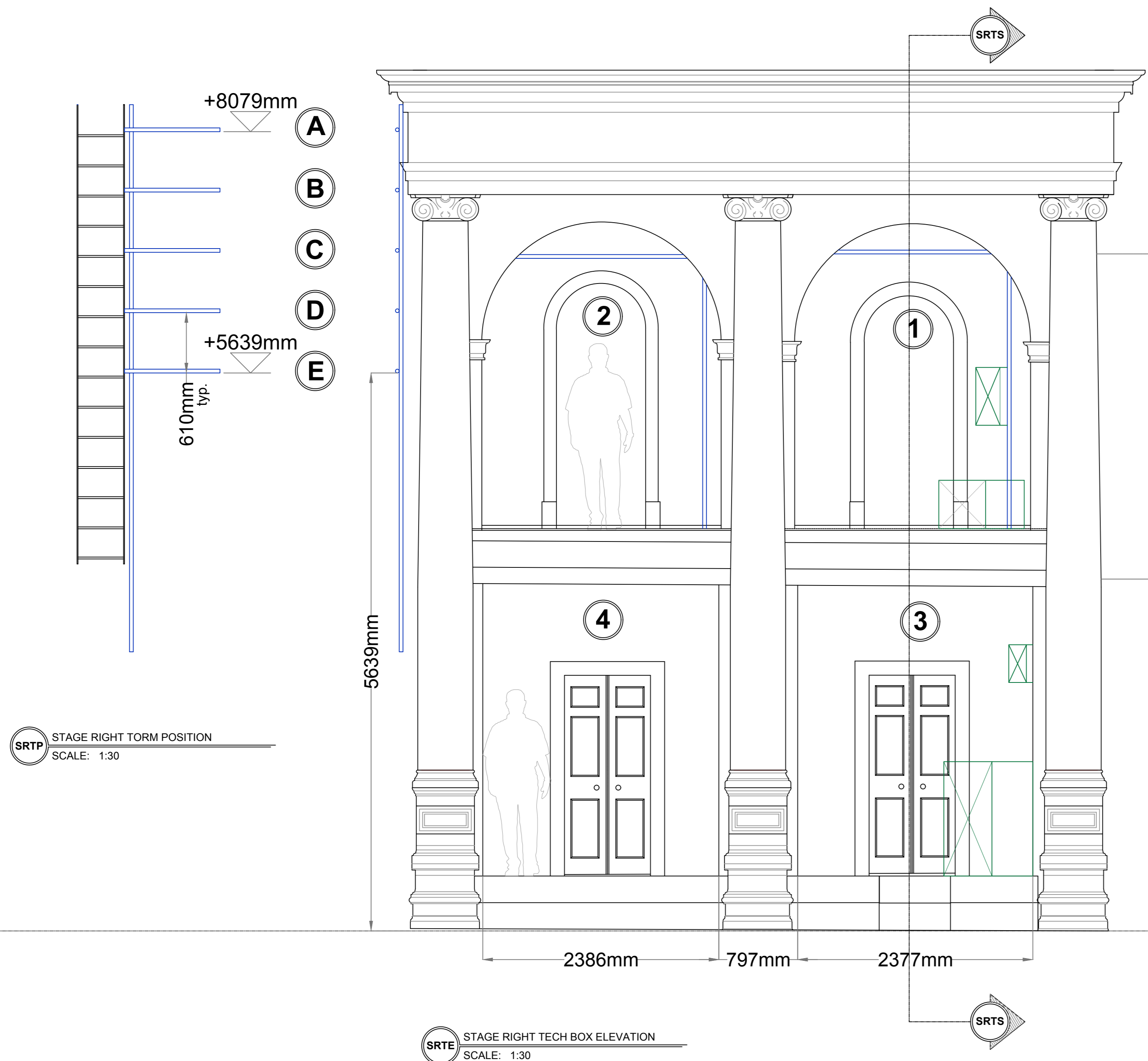
HARVEY THEATER

651 Fulton Street, Brooklyn, NY 11217

BAM

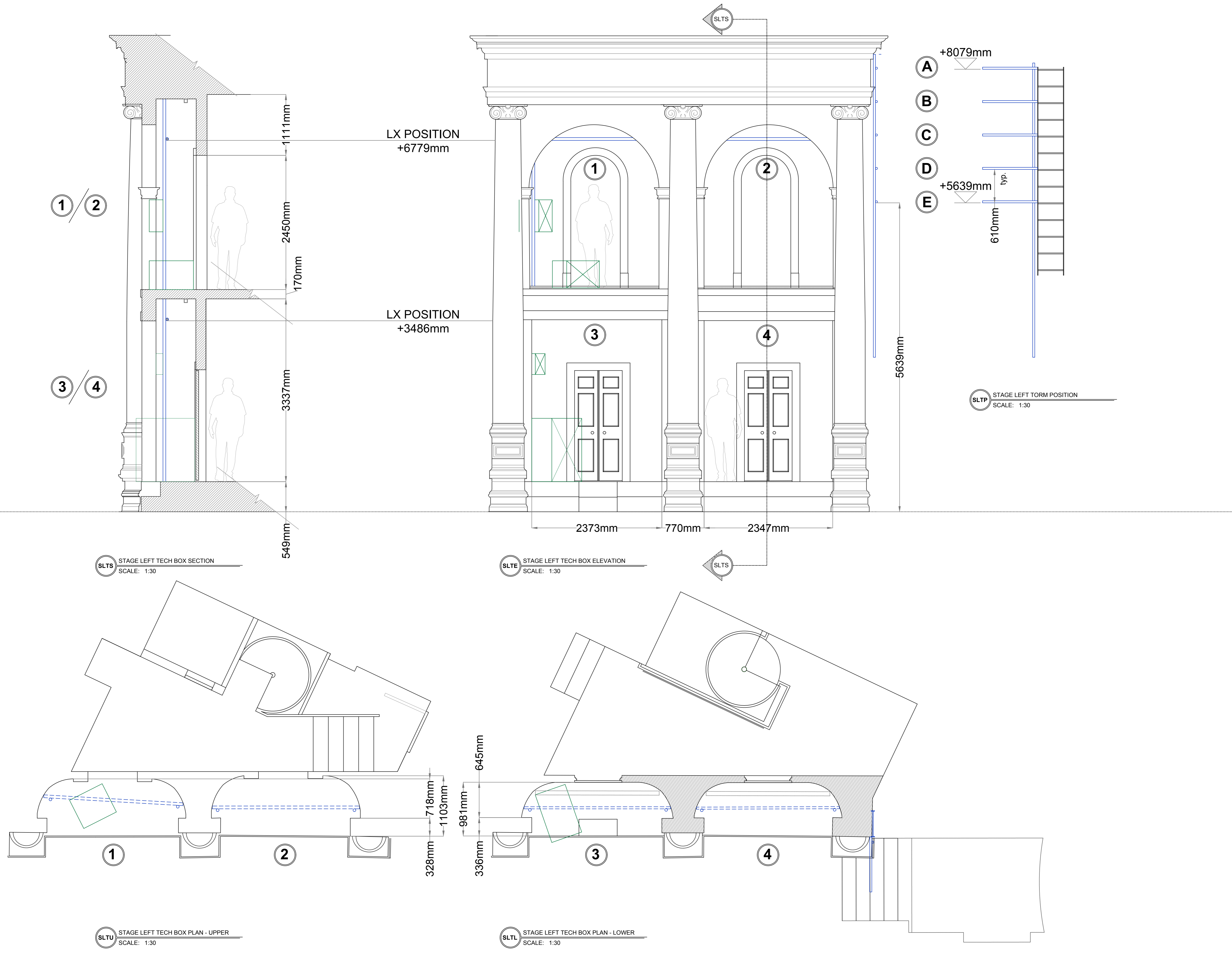
SCALE: 1:50
 REVISED: 19 DECEMBER 2015 jif

**PLEASE CHECK ALL CRITICAL DIMENSIONS ON SITE. *PLEASE ALLOW 3" VARIANCE ON ALL DIMENSIONS. *PLEASE ALLOW 6" AROUND ALL DECORATIVE AND CURVED ELEMENTS OF THE THEATRE.



SOUND	
Center Cluster Array:	10x D7B T10 cabinets
SL & SR Upper Boxes:	H1 Q10
SL & SR Lower Boxes:	H1 E8
SL & SR Balcony:	H1 Q7
Under Balcony:	SE 8S

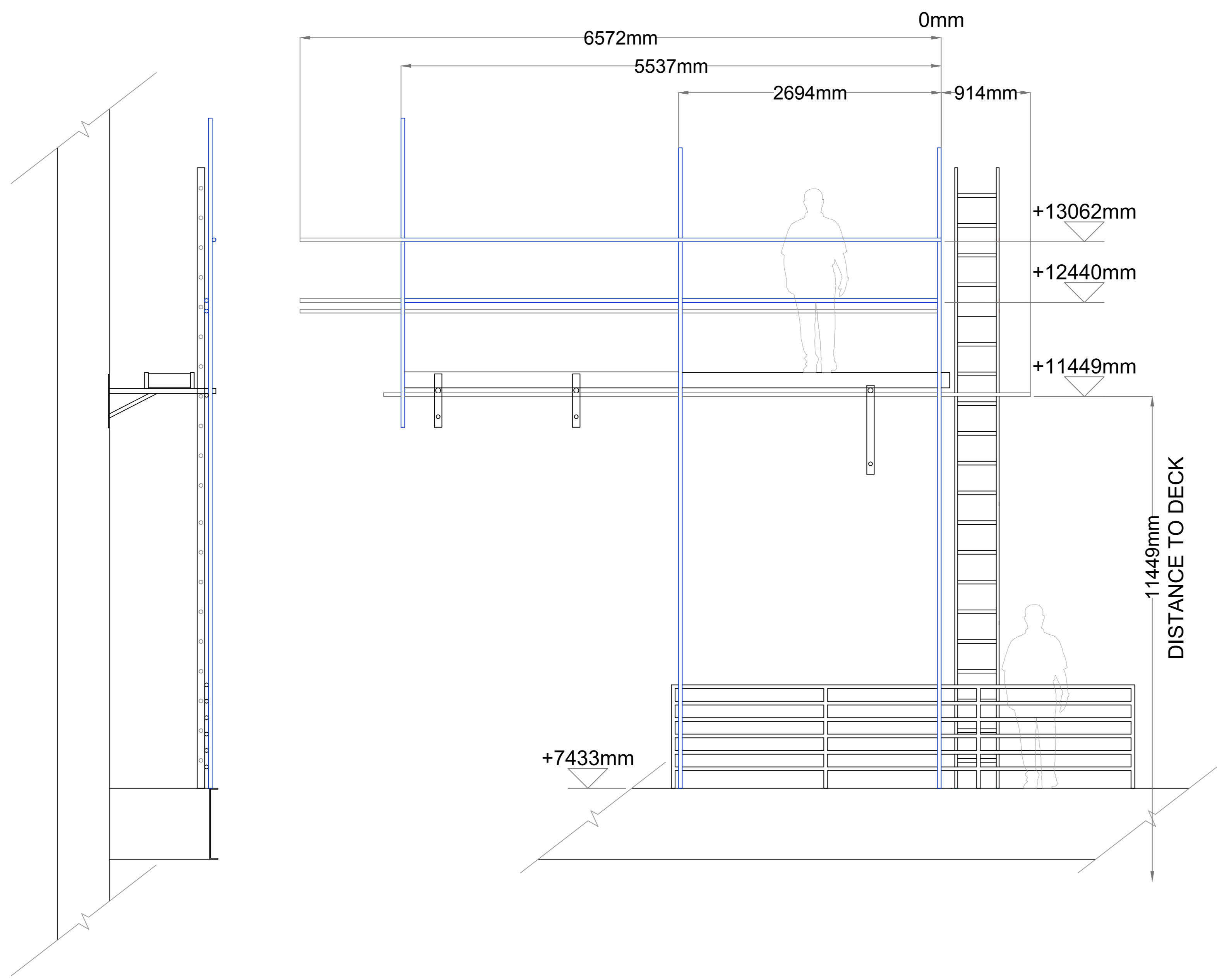
COLOR KEY	
█	LX POSITIONS
█	MOBILE UNITS
█	SOUND POSITIONS
█	HATCH



SOUND	
Center Cluster Array:	10x D7B T10 cabinets
SL & SR Upper Boxes:	H1 Q10
SL & SR Lower Boxes:	H1 E8
SL & SR Balcony:	H1 Q7
Under Balcony:	SE 8S

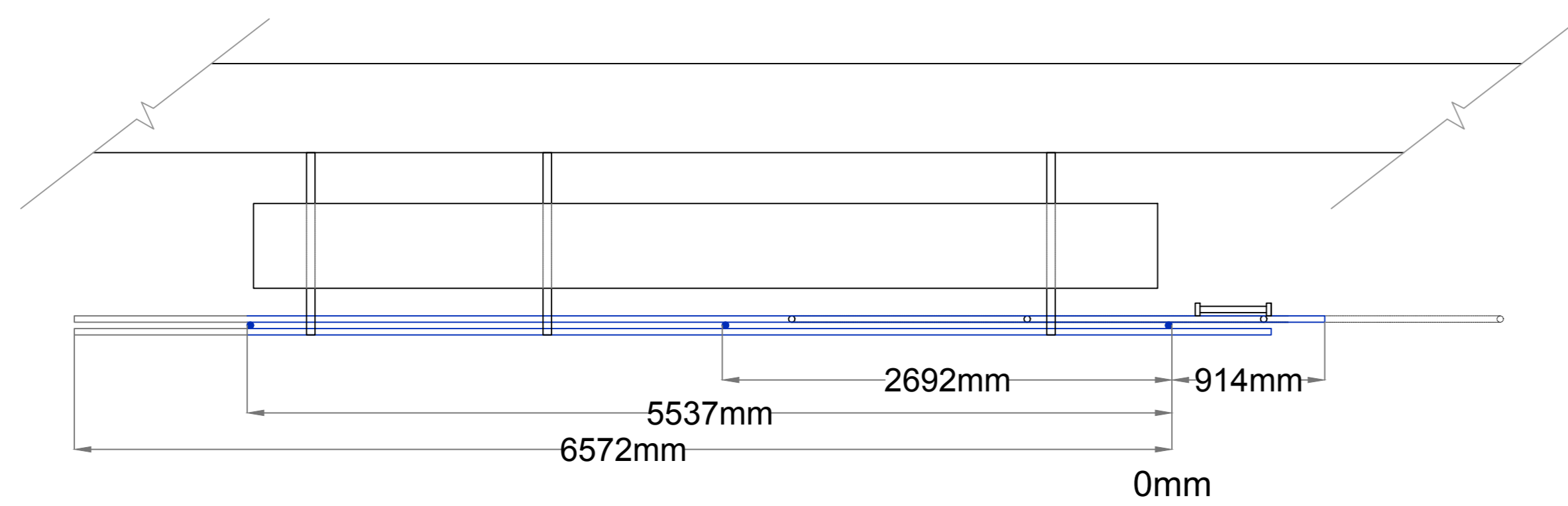
COLOR KEY	
█	LX POSITIONS
█	MOBILE UNITS
█	SOUND POSITIONS
█	HATCH

**PLEASE CHECK ALL CRITICAL DIMENSIONS ON SITE. *PLEASE ALLOW 3" VARIANCE ON ALL DIMENSIONS. *PLEASE ALLOW 6" AROUND ALL DECORATIVE AND CURVED ELEMENTS OF THE THEATRE.

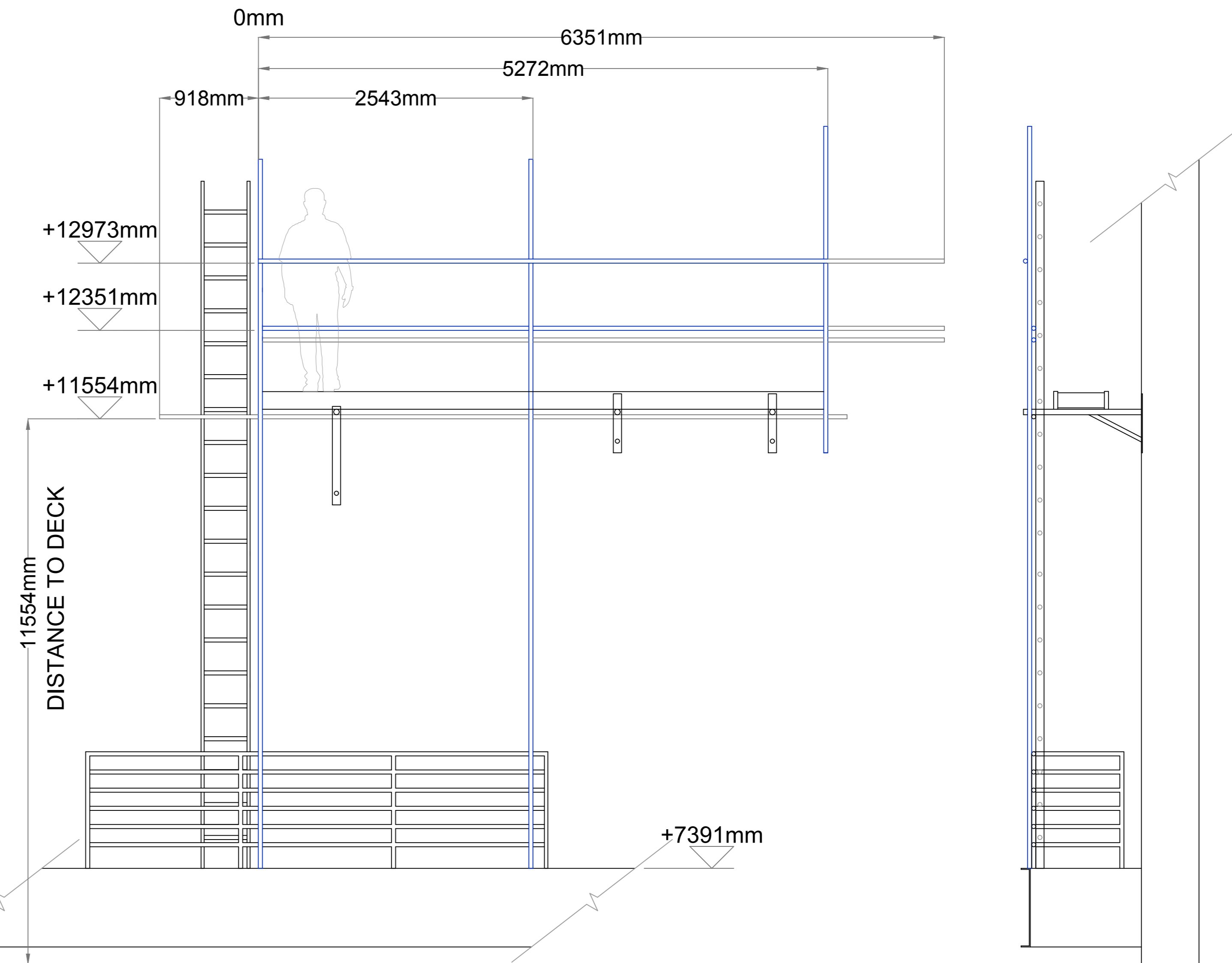


SRGS SR FOH BALCONY POSITION - SIDE VIEW
SCALE: 1:30

SRGE SR FOH BALCONY POSITION - ELEVATION
SCALE: 1:30

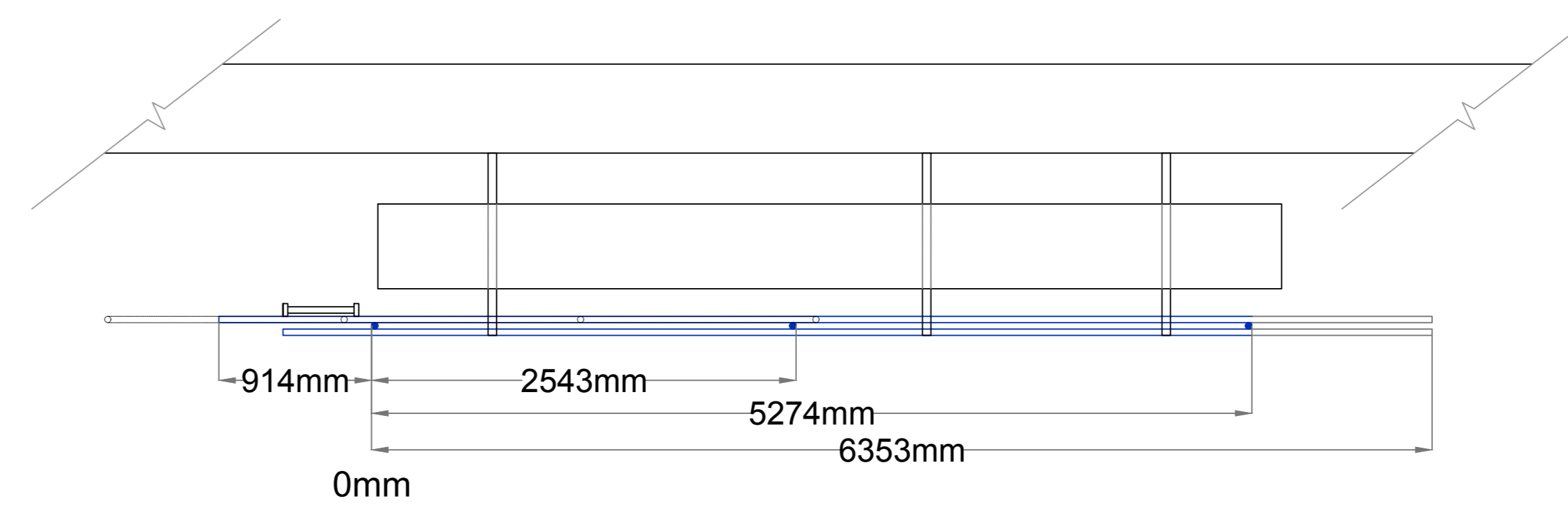


SRGP SR FOH BALCONY POSITION - PLAN
SCALE: 1:30



SLGE SL FOH BALCONY POSITION - ELEVATION
SCALE: 1:30

SLGS SL FOH BALCONY POSITION - SIDE VIEW
SCALE: 1:30



SLGP SL FOH BALCONY POSITION - PLAN
SCALE: 1:30

SOUND
Center Cluster Array:
10x D7B T10 cabinets
SL & SR Upper Boxes:
H1 Q10
SL & SR Lower Boxes:
H1 E8
SL & SR Balcony:
H1 Q7
Under Balcony:
SE 8S

COLOR KEY
LX POSITIONS
MOBILE UNITS
SOUND POSITIONS
HATCH

****PLEASE CHECK ALL CRITICAL DIMENSIONS ON SITE. *PLEASE ALLOW 3" VARIANCE ON ALL DIMENSIONS. *PLEASE ALLOW 6" AROUND ALL DECORATIVE AND CURVED ELEMENTS OF THE THEATRE.**

HARVEY THEATER

651 Fulton Street, Brooklyn, NY 11217

LIGHTING
FOH BALCONY POSITIONS

PLATE #

9 OF **9**

SCALE: 1:50
REVISED: 19 DECEMBER 2015 jif

BAM