

BAM ^{2006—2008} Annual Report

MUSIC, THEATER, FILM, COMMUNITY, ART, DANCE

Brooklyn, New York

Since 1861



Amjad, 2008 Next Wave Festival.
Photo courtesy
Édouard Lock

2	BAM Chair Letter
4	President & Exec. Producer Letter
6	2006 Next Wave Festival
8	2007 Next Wave Festival
10	BAM Dance
12	BAM Music/Opera
14	BAM Theater
16	BAM Rose Cinemas BAMcinématek
20	Sundance Institute at BAM
21	Takeover
22	Between the Lines
23	The Met: Live in HD
24	BAMart
26	BAMcafé Live
30	Community
32	Education
34	Humanities
38	Hamm Archives
40	BAM Next Stage Campaign
50	Staff
52	Mission Statement
53	Board
62	Financial Statements

BAM ENDOWMENT TRUST

A-1	BET Chair Letter
A-3	BET Mission Statement
A-4	BET Board
A-5	BET Financial Statements



To the BAM family:

The past two performance seasons once again demonstrated the excellence of BAM's programming and the family of artists, patrons, audiences, and staff whose dedication and effort make it all possible. The achievements delineated on the following pages would not be possible without their participation. As always, we cherish our relationships with these great artists and are indebted to them in every way.

Our operating budget has grown to its highest level ever, and along with that comes continually challenging annual fundraising goals. While government funding has been reduced due to the current climate, BAM is grateful for the continuing, critical appropriations provided by: Mayor Michael R. Bloomberg; the New York City Council, led by Speaker Christine C. Quinn, her Cultural Committee Chairman Domenic M. Recchia Jr., and our own Council member Letitia James; Brooklyn Borough President Marty Markowitz; and the NYC Department of Cultural Affairs, Kate D. Levin, Commissioner—whose longstanding operating and capital support is a financial cornerstone for all of our activities.

Also providing leadership support for our Spring Season is Bloomberg with its generous presenting sponsorship.

In 2007, major milestone anniversaries were celebrated by two of our anchor programs: the Next Wave Festival and DanceAfrica. The Next Wave Festival celebrated its 25th season and its 25th consecutive year of sponsorship and partnership from Altria Group, Inc. We salute Altria for its tremendously generous and steadfast support of Festival on both the operating and endowment fronts. DanceAfrica, BAM's longest running performance series—and one of America's largest and most vibrant celebrations of African and African American dance, music, and culture—celebrated its 30th season.

Looking forward, on January 21, 2009, we announced the BAM Next Stage Campaign, a five-year, \$300 million effort designed to ensure the stability and longevity of the world renowned cultural institution as it approaches its 150th anniversary in 2011. The Campaign's multiple initiatives address BAM's anticipated financial, artistic, community, and structural needs for the long term. The Campaign's primary objectives are: to fund new, ground-breaking artistic initiatives; to stabilize the institution's future operating budgets so that all BAM programs will flourish; to increase BAM's endowment to over \$100 million; and to transform the former Salvation Army Building adjacent to BAM into the BAM Richard B. Fisher

Building. This building will be a much-needed facility used to introduce emerging artists to our audience as well as expand our community and arts education programs. I encourage all of you to join me in supporting this landmark fundraising effort for BAM's future. We need your support.

I want to recognize and thank BAM Endowment Trust Board Chair Tim Ingrassia and his fellow trustees for the job they are doing to wisely invest BAM's endowment in these difficult economic times.

I am saddened to report the loss of three very near and dear friends: Rita K. Hillman (1912—2007), who, as a BAM board member for over 30 years, provided critical counsel for a growing institution and generous support for its operating and endowment needs; Charlotte Kriegel (1910—2007), wife of BAM Trustee I. Stanley Kriegel for 72 years, whose spirit and love of life—for family, friends, Brooklyn, and BAM—were unparalleled; and former BAM Endowment Trust Chair Irwin Lainoff (1930—2007), whose expansive understanding of investment strategy, his love for Brooklyn, and his great warmth of spirit were tremendous assets to the BAM family.

I also want to thank my fellow members on the BAM Board of Trustees for their

valued leadership. I welcome the new members who have joined since July 2006: Linda Chinn, William Edwards, Richard Feldman, Derek Jenkins, Gary Lynch, Donald R. Mullen, Jr., Brian Nigito, Steven Sachs, Timothy Sebuya, Jessica Smith, Joseph A. Stern, and Ex-Officio members: Governor David A. Paterson and his representative Arana Hankin; City Council Speaker Christine Quinn and her representative Lela Goren; and Susan Kupferman representing Mayor Bloomberg. I offer the departing members thanks for their tremendous work: Susan Baker (who continues to serve on the BAM Endowment Trust Board), Susan Foote, Amy Klein, Jean-Pierre Lehmann, Frederick Meagher, Jean-Marc Moriani, Mark Page, Roberto Pesaro, and Diana Taylor.

As you read the report, I know you'll feel the BAM spirit. We can't do it without all of you. Thank you so much for your support and participation.

See you at BAM,

Alan H. Fishman
CHAIRMAN

Dear Friends,

Brooklyn's secret is out—throughout the city, nation, and beyond, the borough is widely regarded as one of the world's most exciting and innovative cultural capitals. As we have for years, BAM is steadfastly committed to honor this reputation by producing and presenting premier international and local artists in all disciplines.

BAM is entering a phase of dramatic expansion, both with our activity on our stages as well as throughout the borough and beyond. We're thrilled with the success of such focused, new programs as Brooklyn Next (now known as Sounds Like Brooklyn), a borough-based festival celebrating the strength and diversity of local musicians in concerts at BAM and throughout Brooklyn venues. And we remain strongly committed to advancing the range and breadth of our programming, allowing BAM's artists to enter into conversation with audience members and artistic peers from around the world in pre- and post-performance talks produced by BAM Education & Humanities, just one element of the department's many programs.

Over the past two years, BAM's theater program saw turns on the stage by such iconic figures as Ian McKellen, Fiona Shaw, Patrick Stewart (in a production of *Macbeth* that moved to Broadway), and the incomparable cast of an original production of *Endgame*, directed by Andrei Belgrader, which featured John

Turturro, Alvin Epstein, Max Casella, and Elaine Stritch. Norwegian director Eirik Stubø received an Obie award for *The Wild Duck* (Next Wave Festival 2006) and Polish director Krzysztof Warlikowski was awarded an Obie award for *Krum* (Next Wave Festival 2007). As we prepare for the three-year *Bridge Project*—a partnership with London's Old Vic and Neal Street Productions on original productions of classic plays, directed by Sam Mendes—we are extraordinarily proud of our position as a significant presenter and producer in the New York theater community.

We continue to invest in BAM artists by commissioning new work, which helps support the growing landscape of New York's performing arts. In the 2007 Next Wave Festival, composer/violinist Daniel Bernard Roumain (DBR) introduced the first of three BAM-commissioned projects, *One Loss Plus*. As part of the 25th Next Wave Festival, BAM commissioned songwriter Sufjan Stevens to create *The BQE*, with original music, film, and live hula hoopers. And BAM commissioned choreographer John Jasperse to create *Misuse liable to prosecution*, a provocative, atmospheric work that used found and borrowed objects and posed profound questions about the nature of such commissions.

New programming initiatives focused on capturing the energy and creative spirit of



Karen Brooks Hopkins. Photo: Randy Duchaine



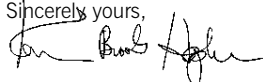
Joseph V. Melillo. Photo: Emeric Lhuisset

young New Yorkers. In fall of 2007, we held the inaugural BAM Takeover, an annual occasion to throw open our doors for an all night party. As a roster of noteworthy bands rotated on the Opera House stage, DJs led a dance party in the BAMcafe, while all four cinemas simultaneously screened special film series. Fall 2007 also introduced a new humanities series, *Between the Lines*, featuring a curated lineup of young authors, filmmakers, and songwriters. Held in the relaxed environs of the BAMcafe, the three different programs during the Next Wave Festival, provided a glimpse into emerging artistic voices of the next generation. Both of these new initiatives had low ticket prices, encouraging audiences from all segments of New York's population to experience BAM. Many audience members visited BAM Rose Cinemas. Three screens show first-run feature films, and one is dedicated to BAMcinématek, with repertory, foreign, and independent films and special guests and events, including the third Sundance Institute at BAM.

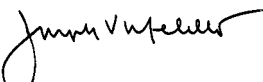
As individuals and institutions weather economic market fluctuations, BAM cannot overemphasize the importance of our endowment. We rely on the strength and stability that hard work and careful planning affords, and are grateful to all the early funders—and new donors—that con-

tinue to support the endowment's growth. BAM's physical campus continues to enjoy both permanent and seasonal enhancements, and we're particularly delighted with two new elements. One is the gorgeous, Hugh Hardy-designed glass canopy sheltering the lobby doors of the Peter Jay Sharp Building. Additionally, as part of Next Wave Art 2007, BAM commissioned visual artist Leo Villareal to create *Stars*, an LED installation hung in the arched windows of the building, a perfect external compliment to the vibrancy of the artistic works within, as those of you who visited the building after dark saw firsthand.

As always, we thank our institutional and individual supporters for helping to make BAM the premier urban arts center. We could not accomplish our important work without you and we look forward to our continued dialogue in the years to come.

Sincerely yours,


Karen Brooks Hopkins
PRESIDENT



Joseph V. Melillo
EXECUTIVE PRODUCER

BAM MISSION STATEMENT

BAM's mission is to be the preeminent, progressive performing and cinema arts center of the 21st century, engaging both global and local communities. BAM strives to create a distinctive environment for an inspirational and transformative aesthetic experience.

BOARD

Brooklyn Academy of Music

CHAIRMAN OF THE BOARD

Alan H. Fishman

VICE CHAIRMAN OF THE BOARD

William I. Campbell

PRESIDENT

Karen Brooks Hopkins

SECRETARY

Joseph V. Melillo

TREASURER

Keith Stubblefield

PRESIDENT EMERITUS

Harvey Lichtenstein

MEMBERS

Tony Bechara
Linda Chinn
Henry Christensen III
Roy Cosme
Beth Rudin DeWoody
Charles M. Diker
Brendan J. Dugan
William Edwards
Mallory Factor
Ronald E. Feiner, Esq.
Richard E. Feldman, Esq.
Steven G. Felsher
Jeanne Donovan Fisher
Barry M. Fox
Robert M. Greenberg
G. Penn Holsenbeck
Dr. Edison O. Jackson
Derek Jenkins
Mary Kantor
Dan Klores
I. Stanley Kriegel
Edgar A. Lampert
François Letaconnoux
Kitty C. Linder
Gary Lynch
Adam E. Max
James I. McLaren
Martin F. Mertz
Ahrin Mishan
John Morning

Donald R. Mullen Jr.
Karen B. Peetz
William A. Perlmuth
David L. Ramsay, M.D., M.Ed.
Bruce C. Ratner
Frances A. Resheske
Jonathan F.P. Rose
Steven Sachs
Amy W. Schulman
Timothy Sebulny
Danny Simmons
Jessica Smith
Joseph A. Stern
Jakob Trollbäck
Nora Ann Wallace
William Warren
Elaine Weinstein
Hon. Franklin R. Weissberg
Vaughn C. Williams, Esq.
Claire Wood
Andrew Zolli

EX OFFICIO

Hon. David A. Paterson
Hon. Michael R. Bloomberg
Hon. Christine Quinn
Hon. Marty Markowitz
Hon. Kate D. Levin
Harvey Lichtenstein
Lela Goren
Arana Hankin
Susan Kupferman
Jamie Snow Markowitz

CHAIRMEN EMERITI

Neil D. Chrisman
Seth Faison
Leonard Garment, Esq.

HONORARY TRUSTEES

Robert L. Forbes
Charles J. Hamm
Barbara B. Haws, C.A.
William Josephson
Stanley H. Kaplan
John Lipsky
Laurie Mallet
Cathy-Ann Martine
Steven C. Parrish



Hedda Gabler,
2006 Next Wave
Festival. Photo:
Arno Declair

BAM's 2006 Next Wave Festival defied convention by presenting not only innovative hybrid productions by young artists and return visits by festival favorites, but also by featuring strikingly fresh takes on classic stories. It included two of Henrik Ibsen's plays (marking the Ibsen centennial): National Theatre of Norway, Oslo performed *The Wild Duck*, directed by Eirik Stubø, with retro-hip, striking staging; and Schaubühne am Lehniner Platz, Berlin performing *Hedda Gabler*, directed by Thomas Ostermeier, a chilling, Bauhaus-modern take. Shakespeare's *Twelfth Night* was rendered in Russian and directed by Declan Donnellan (Chekhov International Theatre Festival); and 4D art staged the Bard's *The Tempest* (*La Tempête*, directed by Michel Lemieux, Victor Pilon, and Denise Guilbault). *Don Juan in Prague* transformed the Mozart/Da Ponte opera into a delirious, eye-popping spectacle in The Strings of Autumn Festival in Prague and the Prague National Theatre's production, directed by David Chambers.

A signature of the Next Wave is the combination of genres, and 2006's festival exemplified this. Choreographer Sarah

Michelson's Bessie Award-winning *DOGS* featured not only richly textured dance, but it also transformed the Harvey Theater into a shape-shifting art installation; David Dorfman's *underground* examined the complex facets of the Weather Underground's radical activism. *The End Of Cinematics* (Mikel Rouse) and *Still Life with Commentator: An Oratorio* (Vijay Iyer, Michael Ladd, Ibrahim Quraishi) experimented with theatrical invention combined with compelling, topical music. And the late Sekou Sundiata's *the 51st (dream) state* blended his spellbinding spoken word performance with memorable songs. BAM artists making welcome returns included Steve Reich, whose 70th birthday was feted with a dual bill of dance by another favorite, Anne Teresa De Keersmaeker, and Akram Khan. Sankai Juku's *Kagemi* displayed the company's singular blend of contemporary butoh, and *impermanence* revisited Meredith Monk's deep and multi-faceted talents. Tanztheater Wuppertal Pina Bausch's *Nefés* transported the rituals of Istanbul to the Opera House as only the masterful Bausch could.

STEVE REICH @ 70

Music by Steve Reich
Choreography by Anne Teresa De Keersmaeker and Akram Khan
Featuring the London Sinfonietta
Oct 3, 5—7

THE END OF CINEMATICS

Conceived, written and directed by Mikel Rouse
Oct 4—7

VIOLET FIRE: A MULTIMEDIA OPERA

Composed by Jon Gibson; concept & libretto by Miriam Seidel; directed by Terry O'Reilly
Oct 18, 20, 21

MYCENAEAN

Written and directed by Carl Hancock Rux
Oct 10, 12—14

NINE HILLS ONE VALLEY

Ratan Thiyam's Chorus Repertory Theatre of Manipur
Oct 11—14

DOGS

Choreography by Sarah Michelson
Oct 18—21

IMPERMANENCE

Conceived, directed, and composed by Meredith Monk
Nov 1—5

KAGEMI—BEYOND THE METAPHORS OF MIRRORS

Sankai Juku
Directed, choreographed, and designed by Ushio Amagatsu
Oct 24, 26—29

THE WILD DUCK

By Henrik Ibsen
National Theatre of Norway, Oslo
Directed by Eirik Stubø
Oct 25—29

TWELFTH NIGHT

By William Shakespeare
Chekhov International Theatre Festival
Directed by Declan Donnellan
Designed by Nick Ormerod
Presented in association with Cheek by Jowl
Nov 7—12

THE 51ST (DREAM) STATE

Conceived and written by Sekou Sundiata
Directed by Christopher McElroen
Presented in association with HARLEM STAGE/Aaron Davis Hall, Inc.
Nov 8, 10 & 11

UNDERGROUND

David Dorfman Dance
Conceived and choreographed by David Dorfman
Co-directed by Alex Timbers
Nov 14, 16—18

LA TEMPÊTE (THE TEMPEST)

By William Shakespeare
Directed by Michel Lemieux, Victor Pilon, Denise Guilbault
Translated into French by Normand Charette
A 4D art production
Nov 15, 17 & 18

STILL LIFE WITH COMMENTATOR: AN ORATORIO

Composed by Vijay Iyer
Libretto by Michael Ladd
Directed by Ibrahim Quraishi
Dec 6—10

HEDDA GABLER

By Henrik Ibsen
Translated by Heinrich Schmidt-Henkel
Schaubühne am Lehniner Platz, Berlin
Directed by Thomas Ostermeier
Nov 28—Dec 2

RED HOT + RIOT LIVE!: THE MUSIC AND SPIRIT OF FELA KUTI

(Amadou & Mariam, Cheikh Lô, dead prez, Keziah Jones, Les Nubians, Meshell Ndegeocello, Yerba Buena, Tony Allen, John Medeski)
Music director, Andres Levin
Produced by Yale Evelev & Paul Heck
Dec 1 & 2

NEFÉS

A Piece by Pina Bausch
Tanztheater Wuppertal Pina Bausch
Dec 8—10, 12, 14—16

DON JUAN IN PRAGUE

Presented in association with the Strings of Autumn Festival in Prague and the Prague National Theatre
Adapted and directed by David Chambers from Mozart and Da Ponte's *Don Giovanni*
Conducted by Petr Kofron
Dec 13—16



BAM's Next Wave Festivals are famous for bringing performance to Brooklyn from distant lands, but the 2007 festival pushed that reputation farther than ever, with a generous dash of local talent as well. Cloud Gate Dance Theatre of Taiwan performed the meditative *Wild Cursive* and Pappa Tarahumara (Tokyo) brought *Ship in a View*, full of dream/nightmare-like imagery. *The Gate* by Tan Dun (a New Yorker born in China) was performed by the Brooklyn Philharmonic. Kronos Quartet performed *More Than Four*, including exuberant compositions/performances by Finland's Kimmo Pohjonen and Samuli Kosminen, plus New York puppeteer/composer Erik Sanko's fanciful vision. Finn Tero Saarinen choreographed the riveting *Borrowed Light*, influenced by the Shaker tradition, with live music by the Boston Camerata. Hailing from Spain—Nacho Duato's *Compañía Nacional de Danza*, in a visually spectacular program, as well as young talents Buika and Macaco (*New Voices from Spain*).

Several members of Europe's crop of exciting young directors were included: TR Warszawa of Poland performed *Krum*, directed by Krzysztof Warlikowski, and Germany's Thalia Theater brought Michael Thalheimer's production of *Lulu*. James Thiérée and his gifted troupe from France performed *Au Revoir Parapluie*, and Israel's Batsheva Dance Company performed *Three*, choreographed by the incomparable Ohad Naharin. London's Isaac Julien, visual artist, and Russell Maliphant, choreographer, collaborated on *Cast No Shadow*, a part of Performa 07.

New York creativity was also well represented. John Jasperse choreographed the arresting *Misuse liable to prosecution*; SITI Company performed Charles L. Mee's intoxicating meditation on Joseph Cornell, *Hotel Cassiopeia*, directed by Anne Bogart. Sufjan Stevens' exuberant production of *The BQE* featured hula hoopers in addition to a full orchestra/band; and Daniel Bernard Roumain (DBR) and collaborators performed *One Loss Plus*.



WILD CURSIVE
THE FINAL CHAPTER OF CURSIVE: A TRILOGY
Cloud Gate Dance Theatre of Taiwan
Choreography by Lin Hwai-min
Oct 2, 4–7

KRONOS QUARTET: MORE THAN FOUR
With special guests Kimmo Pohjonen/Samuli Kosminen and Erik Sanko
Oct 3, 5 & 6

HOTEL CASSIOPEIA
Created and performed by SITI Company
Written by Charles L. Mee
Directed by Anne Bogart
Oct 9–13

COMPAÑÍA NACIONAL DE DANZA
Choreography by Nacho Duato
Oct 16, 18–20

KRUM
By Hanoch Levin
TR Warszawa
Co-produced by Sary Teatr (Cracow)
Directed by Krzysztof Warlikowski
Oct 17–20

NEW VOICES FROM SPAIN
Buika, Oct 26
Macaco, Oct 27

MISUSE LIABLE TO PROSECUTION
John Jasperse Company
Choreography by John Jasperse
Music by Zeena Parkins
Oct 31–Nov 3

THE BQE
Composed and performed by Sufjan Stevens
Nov 1–3



CAST NO SHADOW
Isaac Julien, Russell Maliphant
Nov 6, 8–10

BORROWED LIGHT
Choreography by Tero Saarinen
Music directed by Joel Cohen
Performed by Tero Saarinen Company
and The Boston Camerata
Nov 7–10

THREE
By Ohad Naharin
Batsheva Dance Company
Nov 13, 15–17

ONE LOSS PLUS
Conceived and composed by Daniel Bernard Roumain (DBR)
Nov 14, 16 & 17

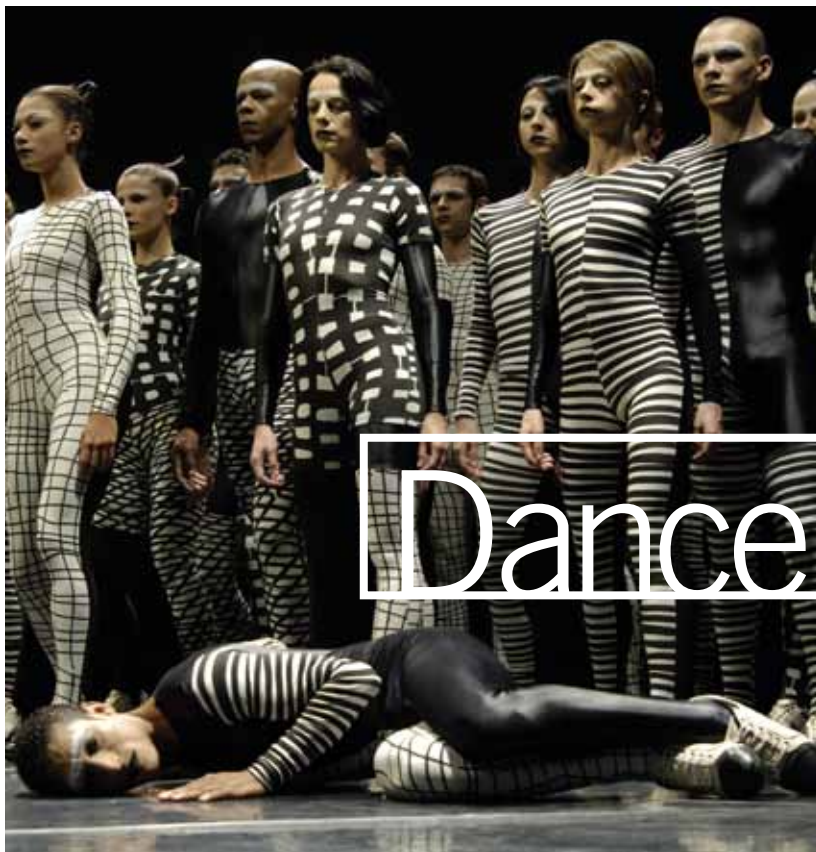
LULU
By Frank Wedekind
Thalia Theater, Hamburg
Directed by Michael Thalheimer
Nov 27, 29, 30 & Dec 1

SHIP IN A VIEW
Pappa Tarahumara
Directed and choreographed by Hiroshi Koike
Nov 28, 30 & Dec 1

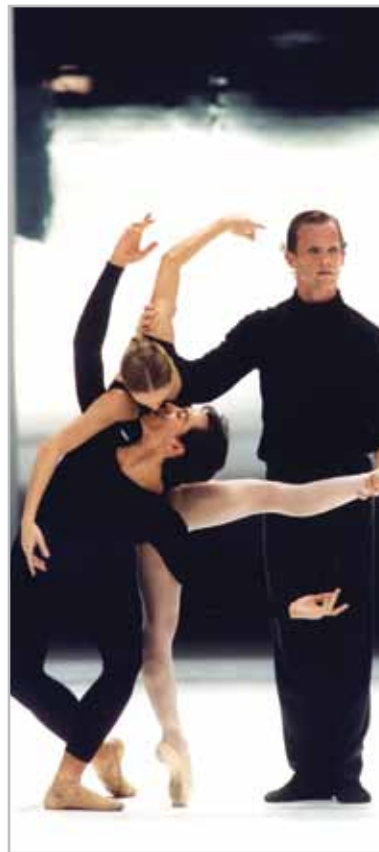
AU REVOIR PARAPLUIE
Directed by James Thiérée
Dec 4–9, 11–16

BAM and Brooklyn Philharmonic present THE GATE
Composed and conceived by Tan Dun
Conducted by Michael Christie
Produced by BAM
Dec 5, 7 & 8

Grupo Corpo,
Benguelê and Breu,
2008 Spring Season.
Photo: José Luiz
Pederneras



Dance ranged from Hamburg Ballet's *Death in Venice* (choreographed by John Neumeier), a passionate tale told in neo-classical ballet; to William Forsythe's *Three Atmospheric Studies*, a riveting tour de force of dance/theater with remarkable sound and lighting; Doug Varone's feverish *Dense Terrain*; and the 30th and 31st years of DanceAfrica, which has become BAM's longest running dance festival. The crowd-pleasing Grupo Corpo (Brazil) returned with *Benguelê and Breu*. BAM's legacy as an international destination for dance grew with a visit by prima ballerina Nina Ananiashvili's *State Ballet of Georgia*, and the triumphant return to BAM of the Alvin Ailey American Dance Theater presented by The Joyce Theater.



The Hamburg Ballet,
Death in Venice, 2007
Spring Season. Photo:
Holger Badekow

DEATH IN VENICE

A Dance of Death by John Neumeier
A free adaptation of the novella by Thomas Mann
The Hamburg Ballet
Feb 7—10, 2007

THREE ATMOSPHERIC STUDIES

A work by The Forsythe Company
Directed by William Forsythe
Feb 28—Mar 3, 2007

DENSE TERRAIN

Doug Varone and Dancers
Conceived, directed, and choreographed by Doug Varone
May 16, 18—20, 2007

30 YEARS OF DANCEAFRICA

Remember! Honor! Respect! An African Odyssey
Artistic director Chuck Davis
May 25—27, 2007

NINA ANANIASHVILI AND THE STATE BALLET OF GEORGIA

Choreographers: George Balanchine, Alexei Ratmansky,
Yuri Possokhov
Feb 27, 29—Mar 2, 2008

BENGUELÊ AND BREU

Grupo Corpo
Choreographed by Rodrigo Pederneras
Mar 25, 27—29, 2008

DANCEAFRICA 2008

Bridge to Cultural Rejuvenation & Enlightenment
Artistic Director Chuck Davis
May 23—26, 2008

THE JOYCE THEATER PRESENTS ALVIN AILEY AMERICAN DANCE THEATER AT BAM

2 programs
Jun 3—8, 2008



Mos Def,
Brooklyn Next, 2007.
Photo: XX XX

Brooklyn Next (now known as Sounds Like Brooklyn), focusing on musicians from the borough, featured Mos Def, Gordon Chambers, Soulive, Citizen Cope, and The National, while Mavis Staples showed why she's an R&B legend in a one-night concert. Opera productions included artist William Kentridge's production of *The Magic Flute*, with hypnotic, lush set designs, and Jonathan Miller's interpreta-

tion of Domenico Cimarosa's *Il matrimonio segreto*, performed by members of Brooklyn Philharmonic, conducted by Paul Goodwin, and produced by BAM. April 2008 featured three different BAM-produced concerts of music by Paul Simon: *Songs from The Capeman*, *Under African Skies*, and *American Tunes*. Simon performed with different bands for each program.



The National,
Brooklyn Next, 2008.
Photo: Nicholas
Burham



The Magic Flute.
Photo: Johan Jacobs

BROOKLYN NEXT

MOS DEF
with El Michels Affair, Feb 16, 2007
with K'Naan, Feb 17, 2007

GORDON CHAMBERS/Alice Smith

Feb 23, 2007

THE MAGIC FLUTE

By Wolfgang Amadeus Mozart
Conducted by Piers Maxim
Directed by William Kentridge
A production of De Munt/La Monnaie
Apr 9, 11, 13, 14, 2007

MAVIS STAPLES

Jan 22, 2008

BAM and Brooklyn Philharmonic Present

JOANNA NEWSOM

Featuring members of Brooklyn Philharmonic
Conducted by Michael Christie
Jan 31 & Feb 1, 2008

BROOKLYN NEXT

SOULIVE, with Noble Society, Feb 15, 2008
CITIZEN COPE, with Len Xiang, Feb 16, 2008
THE NATIONAL, with My Brightest Diamond,
Feb 22 & 23, 2008

LOVE IN HARD TIMES:

THE MUSIC OF PAUL SIMON

Produced by BAM
Songs from The Capeman, Apr 1—6, 2008
Under African Skies, Apr 9—13, 2008
American Tunes, Apr 23—27, 2008

Kate Fleetwood and Patrick Stewart in *Macbeth*, 2008 Spring Season. Photo: Manuel Harlan



Productions of Shakespeare included Watermill Theatre and Old Vic productions of Propeller's repertory presentation of *The Taming of the Shrew* and *Twelfth Night*, bawdy, heartfelt productions featuring all-male casts; and Cheek by Jowl's *Cymbeline*, directed with characteristic concision by Declan Donnellan. Chichester Festival Theatre's production of *Macbeth*, directed by Rupert Goold and starring Patrick Stewart and Kate Fleetwood, drew huge audiences, transferred to Broadway, and garnered six Tony Award nominations. *Edward Scissorhands* showed Matthew

Bourne's particular brand of stage magic and kinetic wizardry. The Harvey Theater hosted two Beckett plays—National Theatre of Great Britain's production of *Happy Days*, directed by Deborah Warner and featuring Fiona Shaw; and Andrei Belgrader's version of *Endgame*, with John Turturro, Max Casella, Alvin Epstein, and Elaine Stritch, produced by BAM. The South African team of Athol Fugard, John Kani, and Winston Ntshona brought their play *Sizwe Banzi Is Dead*, by the Baxter Theatre Centre.



Elaine Stritch, Alvin Epstein, and John Turturro in *Endgame*, 2008 Spring Season. Photo: Richard Termine



Edward Scissorhands 2008 Spring Season. Photo: Bill Cooper

EDWARD SCISSORHANDS
Mar 14—31, 2007

**THE TAMING OF THE SHREW/
TWELFTH NIGHT**

By William Shakespeare
Watermill Theatre (UK) and Old Vic productions
by Propeller
Directed by Edward Hall
Mar 17—Apr 1, 2007

CYMBELINE

By William Shakespeare
Directed by Declan Donnellan
Designed by Nick Ormerod
May 2—12, 2007

HAPPY DAYS

By Samuel Beckett
National Theatre of Great Britain
Directed by Deborah Warner
Jan 8—13, 15—20, 22—27, Jan 29—Feb 2, 2008

MACBETH

By William Shakespeare
Chichester Festival Theatre
Directed by Rupert Goold
Feb 12—17, 19—24, 26—Mar 3—9, 11—16,
18—22, 2008

SIZWE BANZI IS DEAD

By Athol Fugard, John Kani, Winston Ntshona
The Baxter Theatre Centre
Directed by Aubrey Sekhabi
Apr 8, 10—13, 15—19, 2008

ENDGAME

Written by Samuel Beckett
Directed by Andrei Belgrader
Produced by BAM
Apr 25—27, 29 & 30, May 1—4, 6—11,
13—18, 2008

BAM Rose Cinemas & BAMcinématek



One of the four theaters of the BAM Rose Cinemas. Photo: Toby Wales

BAM Rose Cinemas continued to grow with more than 382,000 tickets sold and over \$2.8 million in ticket revenue. This was helped by a strong lineup of first-run films such as *Pan's Labyrinth*, *Little Miss Sunshine* (which premiered in New York at the 2006 Sundance Institute at BAM), *No Country for Old Men*, *Juno*, and *There Will Be Blood*. BAM Rose Cinemas continues to reach larger audiences annually as it reaches its tenth birthday in 2009, bringing compelling independent and foreign new film releases to Brooklyn audiences while cultivating a world class repertory film program with BAMcinématek.

BAMcinématek's success included the annual Afro-Punk Festival, a celebration of black rebellion through music, film, and visual art, including a special appearance by former Black Panther Bobby Seale. Surveys of films by director Sam Peckinpah and a tribute to great French Leading Men captivated audiences. A formidable line-up featured a salute to Italian leading ladies such as Anna Magnani and Sophia Loren with the series *Signora & Signore*, films chosen by actor/BAM Cinema Club Chair Paul Giamatti, a week-long engagement of Wong Kar-Wai's *Fallen Angels*, and a series on Yugoslavian Black Wave. The annual Pordenone Silent Film Festival featured silent films with live piano accompaniment, and New Czech Films and

New French Films proved popular. Some of the guests who hosted Q&As included author Jonathan Lethem, animator Jan Svankmajer, actors Bibi Andersson and Javier Bardem, and Czech filmmaking legend Jiri Menzel.

BAMcinématek broke box office records with a week-long salute to Jean-Luc Godard's anarchic *Pierrot le fou*. The African Diaspora and African Film Festivals both returned with new work from the African continent and beyond, and crowds flocked to Hungarian director Bela Tarr's eight-hour *Satantango*. A centennial salute to Brooklyn-born actress Barbara Stanwyck, and a month-long look at the unique work of Japanese director Shohei Imamura were favorites.

Tribute was paid to some of cinema's greatest directors with series devoted to legends Max Ophuls and the 99-year-old Manoel de Oliveira, who visited for a Q&A. Critic J. Hoberman took residence at BAM for a month with some of the most compelling films he's covered during his 30-year career. Tribute to IFC Films celebrated new releases from the intrepid distributor; Best of Youth, focused on films by some of Italy's most promising young directors; and Directors' Fortnight at 40, an overview of the Cannes Film Festival's rival, included some most recent selec-

tions. Special guests during the spring included Larry Clark, David Byrne, Ed Lachman, Annie Leibovitz, Louis Garrell, John Turturro, and Luisa Williams.

FIRST-RUN FILMS

2006

A Prairie Home Companion
Wordplay
An Inconvenient Truth
A Scanner Darkly
Scoop
Little Miss Sunshine
World Trade Center
The Illusionist
Half Nelson
The Science of Sleep
The U.S. vs. John Lennon
A Guide to Recognizing Your Saints
The Last King of Scotland
Infamous
Little Children
Borat
Babel
Volver
For Your Consideration
Dreamgirls
White Christmas
The Painted Veil

2007

Notes on a Scandal
Pan's Labyrinth
The Lives of Others
The Namesake
The Host
Grindhouse
After the Wedding
Black Book
Killer of Sheep
The Valet
Waitress
Paris je t'aime
Away from Her
Crazy Love
La Vie en rose
Lady Chatterley
Sicko
Rescue Dawn
Hairspray
The Ten
Death at a Funeral
No End in Sight
2 Days in Paris
Once
The 11th Hour
Eastern Promises
In the Valley of Elah
Into the Wild
Darjeeling Limited
Lust, Caution
Before the Devil Knows Your Dead
No Country for Old Men
Margot at the Wedding
The Diving Bell and the Butterfly
Juno

2008

There Will Be Blood
Persepolis
The Band's Visit
The Counterfeiters
Paranoid Park
Under the Same Moon
Shine a Light
Snow Angels
Planet B-Boy
Where in the World is Osama Bin Laden?
Baby Mama
The Visitor
Smart People
Then She Found Me
Son of Rambow
Indiana Jones and the Kingdom of the Crystal Skull
Sex and the City
Reprise
Mongol

BAMCINÉMATEK SERIES & GUESTS

2006

Afro-Punk Festival
 Director James Spooner
 Director Don Letts
 Director St. Clair Bourne
 Actor Rony Clanton

Twelve Disciples of Nelson Mandela
 Director Thomas Allen Harris

Bad Guys, Badasses, and Other Mean Spirits: Great Villains in Cinema

Animation Around the World

Raising Hell: Sam Peckinpah

Leading Men of French Cinema

New York Korean Film Festival

The Best of NewFest

The Fabulous Art of Surviving: Lech Kowalski

Jean-Claude Carrière's Language of Film

Men Who Knew Too Much: Hitchcock & Jimmy Stewart

J'aime le cinéma américain: agnès b. selects
 Pianist Donald Sosin
 Fashion designer agnès b.

An Independent Spirit: Monte Hellman
 Director Monte Hellman

Pordenone Silent Film Festival
 Film preservationist Serge Bromberg
 Pianist Donald Sosin
 Singer Joanna Seaton

Made in (Brooklyn) NY
 Director Jonas Mekas
 Director Jennifer Dworkin
 Director/writer Paul Auster

Viva Pedro

New Czech Films
 Director Jan Svankmajer
 Actor Ivan Trojan

Heroic Grace II: Shaw Brothers Return

The Next Director: Marco Tullio Giordana
 Director Marco Tullio Giordana

Torino Cinema
 Director Daniel Gaglianone

Give Thanks for John Ford

Czech Modernism: The 1920s to 1940s

The Mystery of Kaspar Hauser

2007

Gotham Girls Roller Derby Goes to the Movies
 Gotham Girls Roller Derby skaters

The Best of the African Diaspora Film Festival
 Director Tim Alexander
 Director Emily Blake

Graham Greene Noir

Film historian Elliott Stein

Béla Tarr Trilogy

Pimps, Prostitutes, and Pigs: Shohei Imamura's Japan

Creatively Speaking

Best of 2006
 Actor Luisa Williams

Ball of Fire: Barbara Stanwyck Centennial

Generation Garrel

Jean Genet on Film

DanceAfrica

Pierrot! (Plus One)

Afro-Punk Festival
 Activist Bobby Seale
 Director James Spooner
 Director Cinqué Lee
 Director William Greaves
 Director D.A. Pennebaker
 Director Herbert Danska

Signore & Signore: The Leading Ladies of Italian Cinema
 Actor Ornella Muti

Overlooked Aldrich
 Director's daughter Adell Aldrich

Animation Around the World

Wiseman's Wild Kingdom

Paul Giamatti Selects

New Crowned Hope
 Theater director Peter Sellars

Wong Kar-Wai's Fallen Angels

Hong Kong Film

The New York Korean Film Festival

WWII Noir

The Best of NewFest

Yugoslavian Black Wave
 Director Karpo Godina
 Film critic Jurij Meden
 Actor/writer Buck Henry
 Director Milos Forman
 Director Paul Morrissey

DuMaurier on Film

Brooklyn Close-Up
 Director Al Santana
 Director Ishai Setton

The Emotional Camera: Mikhail Kalatozov

Jonathan Lethem Selects
 Author Jonathan Lethem
 Director Ulu Grosbard

Pordenone Silent Film Festival
 Pianist Donald Sosin

Film preservationist Serge Bromberg

New French Films
 Film critic Dennis Lim
 Film critic Dave Kehr
 Film critic Kent Jones
 Director Michel Spinoso

Stanwyck Redux

Sergei Parajanov's Shadows of Forgotten Ancestors

The Next Director: Marc Recha
 Director Marc Recha

New Czech Films
 Director Jiri Menzel
 Actor Klara Issova

Tribute to Ingmar Bergman
 Actor Bibi Andersson
 Actor Pernilla August
 Author Jonathan Lethem

Gotham Awards Tribute to Javier Bardem
 Actor Javier Bardem
 Director Julian Schnabel

The Cinema of Max Ophuls

An Evening with Kent Jones
 Film critic Kent Jones

BAMcinématek Favorites: Antonio Gaudi

Remembering Michelangelo Antonioni

2008

Valentine's Day Dinner and a Movie: His Girl Friday

Milos Forman's Loves of a Blonde

Sneak Preview: Black Magic
 Director Dan Klores

The National Selects: Broadcast News
 Music group The National

Best of the African Diaspora Film Festival
 Director Frances-Anne Solomon
 Director Kirk Shannon-Butts

Tribute to IFC Films
 Director Christophe Honoré,
 Actor Louis Garrel

Gotham Girls Roller Derby Goes to the Movies
 Gotham Girls Roller Derby skaters

30 Years of J. Hoberman
 Film critic J. Hoberman
 Director Ernie Gehr

The Talking Pictures of Manoel de Oliveira
 Manoel de Oliveira

The Saragossa Manuscript

Tomu Uchida: Discovering a Japanese Master

Best of Youth: New Italian Cinema

Creatively Speaking

Annie Leibovitz: Life Through a Lens
 Photographer Annie Leibovitz

John Turturro Selects: Angels with Dirty Faces
 Actor John Turturro

Wong Kar-Wai's As Tears Go By

The Cinematography of Ed Lachman
 Cinematographer Ed Lachman
 Director Larry Clark
 Director/musician David Byrne

DanceAfrica Film

Sundance Institute at BAM

Two by Walter Hill

Directors' Fortnight at 40
 Directors' Fortnight Artistic Director Olivier Père



Marcus Carl Franklin plays Woody in *Todd Haynes 2007 film examining the life of Bob Dylan, I'm Not There*. Photo courtesy of Photofest.

Sundance Institute at BAM



Sundance Institute at BAM completed its second and third festivals at BAM. Each year's series included lively opening night festivities, including remarks by Sundance president and founder Robert Redford, and featured film directors Garth Jennings (*Son of Rambow*) and Nanette Burstein (*American Teen*). A choice selection of festival films screened, including David Gordon Green's *Snow Angels*, *High Falls* starring 2007 BAM Cinema Club Chairs Maggie Gyllenhaal and Peter Sarsgaard, and *Trouble the Water*, directed by Carl Deal and Tia Lessin. Short films took the spotlight for a day, including discussions with Sundance curators about submitting films for consideration. Special programs included play readings, concerts, musical theater performances, art projects, and more.



TAKEOVER 2008.
Photo: Rahav Segev

BAM threw open its doors for an all-night open house called Takeover. Featuring low priced all-access tickets, events occupied every nook and venue in the main building. Bands on the Opera House stage, special film series, DJs and dancing in BAMcafé, and strategically placed artworks drew packed houses and new and familiar faces.

NOV 3, 2007

MUSIC—OPERA HOUSE

Heartless Bastards
Be Your Own Pet
Dirty On Purpose
The Exit
Antibalas

FILMS—BAM ROSE CINEMAS

Lindsay Lohan Mid-Career Retrospective
(*Mean Girls*, *Freaky Friday*, *The Parent Trap*,
I Know Who Killed Me)
Burning Down the House
(*Gimme Shelter*, *Ziggy Stardust and the Spider
from Mars*, *The Filth & the Fury*, *Stop Making
Sense*)
When Animals Hug
(*The Cat from Outer Space*, *World Without Sun*,
and trailers and shorts starring animals)
The Pusher Trilogy

DJS AND DANCING—BAMCAFÉ

Ubiquita NYC (DJ Reborn, DJ Moni, DJ Selly)
with Vikter Duplaix and special guests



A.L. Steiner and robbinschilds, *Between the Lines*, 2007. Photo courtesy of A.L. Steiner



Hadacol Christmas, part of *Between the Lines*, 2007. Photo courtesy of the artist



Peter Grimes, during the 2008 Spring season. Image courtesy of Metropolitan Opera



XX XX during the 2008 Spring season. Photo: Chris Strong

BAM initiated some highly successful programs aimed at broadening audiences and exploring new contexts and sources of cultural content. *Between the Lines*, a three-part series which took place in BAMcafé during the 2007 Next Wave Festival, merged readings, films, music, and multimedia performance. It was co-presented with *A Public Space*, a Brooklyn-based literary quarterly, and curated by Brigid Hughes and Peter Conroy.

2007

OCT

Authors:
Meehan Crist
Wells Tower
John Wray

Filmmakers:
Brent Green
Sabrina Gschwandtner
Mac Premo

NOV

Authors:
Samantha Hunt*
Peter Orner

Filmmakers:
Paul Chan
Dantia Maur MacDonald
Andrew Neel and Elizabeth Neel

DEC

Authors:
Diana George
Ander Monson*
Sharifa Rhodes-Pitts

Filmmakers:
Stephen G. Rhodes
A.L. Steiner and robbinschilds

*Read works co-commissioned by BAM

Metropolitan Opera: Live in HD screened high-definition live satellite feeds of Met Opera performances in BAM Rose Cinemas. Each screening was preceded by a brunch featuring a distinguished speaker conducting an introductory discussion about the opera followed by a Q&A.

2007

Gounod's *Roméo et Juliette*

2008

Verdi's *Macbeth*
Humperdinck's *Hansel and Gretel*
Puccini's *Manon Lescaut*
Britten's *Peter Grimes*
Wagner's *Tristan und Isolde*
Puccini's *La Bohème*
Donizetti's *La Fille du Régiment*



BAMart

BAM embraces the visual arts through collaborations with artists, exhibitions, commissions, and the creation of prints and special editions for fundraising purposes through BAMart. Since the 1980s, BAMart has exhibited hundreds of artists, including Louise Bourgeois, Chuck Close, and Wangechi Mutu. The public can purchase exciting new work in support of BAM through the annual spring BAMart Silent Auction featuring art by hundreds of emerging and established artists, as well as BAM's Photography Portfolios and print editions by artists including William Kentridge and Lorna Simpson. In conjunction with the Next Wave Festival, curator Dan Cameron (Yukie Kamiya co-curated in 2006) selected unique artworks installed throughout BAM, often in unexpected places.

In 2007, Leo Villareal's festive window installation *Stars* illuminated BAM's arched windows. BAMart often shows work by Brooklyn artists, including students. Local partners included Red Hook's Kentler International Drawing Space; artist and BAM trustee Danny Simmons curated that show and others. Nearby MoCADA hosted exhibitions in conjunction with the annual DanceAfrica festival. And installations during Sundance Institute at BAM included an interactive one by Daniel Rozin in the Leonard Natman Room, and Graffiti Research Lab's laser graffiti on BAM's exterior.

Mikhail Baryshnikov,
2004, a piece by
Robert Wilson.

BAMBILL COVER ARTISTS

2006 NEXT WAVE FESTIVAL: McDermott & McGough
2007 SPRING SEASON: Melora Kuhn
2007 NEXT WAVE FESTIVAL: Robert Wilson
2008 SPRING SEASON: Eddie Martinez

2007

NEXTNEXT VISUAL ART

Brooklyn Next Art: Selections from the Kentler Flatfiles
Variations in Black & White
Captured: Ten Pratt Institute Photographers
Ago! Amée!: A DanceAfrica Retrospective (with MoCADA)

SPECIAL PROJECTS/EVENTS

Pulse New York Contemporary Art Fair
3rd Annual BAMart Silent Auction
William Kentridge Print Editions: *Music Box Tondo* and *Bird Catcher*

NEXT WAVE ART

2008

EXHIBITIONS

Brooklyn Next Art: The Jazz Photographs of Fran Kaufman
Morgan O'Hara: Live Transmissions
Brooklynartproject.com: Connected Unconscious
Exposure Checks: Polaroids and Images by Ed Lachman
Talking with Pictures (with MoCADA)
Sundance Institute at BAM: New Frontier Art
Daniel Rozin: *Snow Mirror*
Graffiti Research Lab: *L.A.S.E.R. TAG*

Media Fusion (with Weeksville Heritage Center)

SPECIAL PROJECTS/EVENTS

Art:21 Screening & Reception

4th Annual BAMart Silent Auction

BAM Photo Portfolio III

Kentridge? 2006.





Shae Fiol,
BAMcafé Live, and
Sounds Like Brooklyn.
Photo: XX XX.

BAMcafé Live

BAMcafé Live hosts an eclectic mix of live music on weekends, including artists whose work relates to programs on the mainstage or in the cinemas. Additional highlights included BAMcafé's participation in *Red Hot + RIOT LIVE!*, a tribute to Fela Kuti. BAMcafé Live was also part of the inaugural Brooklyn Next (now Sounds Like Brooklyn); Galapagos Art Space guest curated for one weekend. BAMcafé Live hosted performances as part of Sundance Institute at BAM, curated by noted composer Peter Golub, plus two evenings for BAM's annual Afro-Punk Festival. The café hosted its first dedicated dance parties which set record attendance, including *The Ladies of Ubiquita NYC* (BAM Takeover 07), and the *Liquid Sound Lounge 15th Anniversary Party*.

In the second year of BAM's Brooklyn Next, two weekends were curated by the Brooklyn-based Black Rock Coalition, Jelly NYC, and Soul Summit DJs. BAMcafé Live hosted its third year of performances with Sundance Institute at BAM; participated in the Brooklyn MaQam Festival, presented in conjunction with Brooklyn Arts Council; and hosted two nights for the URB ALT Festival. Attendance for BAMcafé Live grew steadily over these two years. Audience diversity by race, gender, and age is reflected at BAM most strongly at BAMcafé Live performances.



Bonga and the Vodou
Drums of Haiti. Photo:
James Hercule



Shrine for the Black
Madonna. Photo
courtesy of the artists

BAMCAFÉ LIVE 2006

OCTOBER

Fabulous Entourage
Anna Dagmar
Coba
Ezra Reich
Somi
Slow Six
Peace By Piece
Z's

NOVEMBER

Gutbucket
Afroyorker
Uncle Moon
Ben Neill's XIX
Pete Francis & The Flyers
Trio Tragico
Funk Buddha Hip-Hop Holiday
Wunmi
Emperor Adichie
Akoya Afrobeat

DECEMBER

DC Acidophilus
Suphala
Ismail Lumanowski & The New York Gypsy All-stars
Slavic Soul Party
Oratai Ensemble
Tamar Raqs Winter Solstice Hafala
Dr. Israel & Dreadtone International
New Andalucia
Charanga Soleil

BAMCAFÉ LIVE 2007

JANUARY

Shakers n' Bakers
Special Night with Magdalena Gomez—Fred Ho Tribute
Wunmi
Anti-Social Music
Sam Bardfeld: The Soul Cycle
DJ Ian Friday/Manchildblack
Edison Woods
Paula Jeanine & American Ghazal

BAM CAFÉ LIVE

FEBRUARY

Life In A Blender
BRC—Apollo Heights/Juneteenth
Bonga and the Vodou Drums of Haiti
BRC—Shrine for the Black Madonna/Jungli
BRC—Earl Greyhound/Sonny Boy
Brooklyn Next—Galapagos guest curator: Hungry March Band, Bindlestiff Family Cirkus w/DJ Tikka Masala
Brooklyn Next—Galapagos guest curator: Art Jam featuring Earl Dax, Jennifer Miller, Radio Wonderland, Dynasty Handbag, Bora Yoon, DJ Bill Coleman, Daisy Spurs & The Fuckettes

MARCH

ACO Presents Composers OutFront!: Andrew McKenna Lee
Steinhart Jewish Heritage Festival—Hip Hop Hafra
Purim Party
Kaiku
Steinhart Jewish Heritage Festival—ASEFA
Susan Cagle
Lascivious Biddies
Kneebody
Shae Fiol with demax & the n9s
ACO Presents Composers OutFront!: Min-Xiao Fen's Pipa Trio
The NewCookers

APRIL

New Mellow Edwards
Sean Altman
Anat Fort Trio
Brazz Tree
Pistolera
Everett Bradley
Nineveh Road
Deborah Bond

MAY

Onaje Allan Gumbs
Bryan Vargas & Ya Esta
Pillow Theory w/The Smyrk
Faith w/The Dusbini Brothers
The Citizens w/Lumatic
Brian Jackson
Gokh-Bi System

JUNE

Sundance Institute at BAM:
Ljova and the Vjola Contraband
P.T. Walkley and The Adventures of Track
Rabbit with Bradford Reed
Rhythm Republik performs Sign 'O' the Times
Sussan Deyhim
Kono Michi
Russell Taylor with Lenora Jaye
SISTA FACTORY—Shae Fiol with Shu
SISTA FACTORY—St. Juste w/Russell Taylor
Afro-Punk Festival—Cutlery, Bear in Wolf Fur, Ellul, DJ Taylor McFerrin
Afro-Punk Festival—Mighty Fine, Tiombe Lockhart, Swivel

SEPTEMBER

Jill Cuniff
SiLyA
SISTA FACTORY—The Family Stand/Renee Neufville
SISTA FACTORY—Lizz Fields and Jeremy James
Scott Sharrard
Jesus H. Christ and The Four Hornsmen of The Apocalypse

Moisturizer

OCTOBER

BAMcafé Live Next Wave 25th Anniversary—
Gary Lucas & Gods and Monsters
Jen Shyu & Jade Tongue
Muthawit
Grady Tate
CMJ Music Marathon—The Citizens and The Epochs
CMJ Music Marathon—Pillow Theory and The Smyrk
La Vita Williams Guitar Duo

NOVEMBER

JuCa
Tonolec
TAKEOVER: Ubiquita NYC WITH Vikter Duplaix
Chanda Rule
Brasil Guitar Duo
BAM Jam—The Maria Project
Licorice
Funk Buddha Hip-Hop Holiday
Olu

DECEMBER

Gifrants
Chandler
Dr. Madd Vibe (Angelo Moore)
Sunny Jain Collective and TABOO
Roughstars
Tamar Raqs Winter Solstice
Jeremiah
Dawn Drake
Letha Harris and Anthony Dixon

BAMCAFÉ LIVE 2008

JANUARY

Nora York: Furtiva Lagrima
Anna Fiszman & Marc Landesberg w/Felili
Dirk Quinn Band
Chris Bergson Band
Black Rock Coalition's Children of the Revolution
Soul Cycle

FEBRUARY

Black Rock Coalition—Rachid is Rasalus and Honeychild
Coleman
Brooklyn Philharmonic: the youngbloods
Chris Rob
Nadir
Brooklyn Next/Black Rock Coalition—Power Douglas with
Dragons of Zynth and Kyp Malone of TV On The Radio,
CX KIDTRONIK
Brooklyn Next—JellyNYC: White Rabbits with EFFI
BREIST and Miss Fairchild
Brooklyn Next—Soul Summit Music: Strafe, DJ Spinna
Brooklyn Next—Soul Summit Music: Danil Wright
Black Rock Coalition Residence: Earthdriver and Swear
on Your Life

MARCH

Maya Azucena
Brooklyn's MaQam (Brooklyn Arts Council)
Maritri
The Quavers
Jeffrey Gaines
Haale
Michelle Amador
Angela Johnson

APRIL

Music Is The Weapon—Kobo Town & Souljazz Orchestra
Music Is The Weapon—Charanga Soleil & Karlex
Night of the Cookers
Malika Zarra
Liquid Sound Lounge DJ Jeannie Hopper & Jay
Rodriguez
New Genius Music Gallery—Mark Lesseraux &
Jeremiah Hosea
New Genius Music Gallery—Everett Bradley
ACO Composers OutFront! presents Ned McGowan

MAY

MOVIMIENTO featuring Mireya I. Ramos
The Dana Leong Band
guillermo brown featuring BiLLLL\$
BAM Jam—Jef Lee Johnson, Ronny Drayton, and
Marvin Sewell
Junk "KAT" & Modiano + Austin Willacy
Brian Jackson
The Earthman Experience featuring DJ Hard Hittin Harry
Sundance Institute at BAM:
Anthony de Mare
Anvil Live!

JUNE

Prince 30/50: Strictly 4 Da Headz w/The BRC Orchestra
Sundance Institute at BAM: Chien du Faience
Melomane
Kristin Mainhart
Beatboxer Entertainment
Sarah Renfro
URB ALT Festival—The Muthawit Orchestra + Brandee
Younger, Faith, and Brig Feltus,
URB ALT Festival—The Muthawit Orchestra + V. Jeffrey
Smith, and Tenderhead



Tamar Raqs. Photo courtesy of the artist

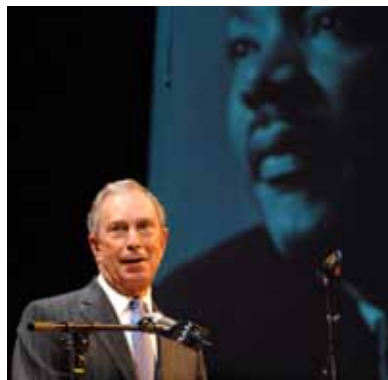


2008 BAMboo! block party. Photo by XX XX

Great musicians and cinema classics filled BAM's stages and screens indoors and out, as BAM presented free and accessible programming. The annual BAM Rhythm & Blues Festival at MetroTech spanned genres, featuring electrifying pioneers and rising stars of R&B and world music in downtown Brooklyn. Other outdoor events included the popular **DanceAfrica Bazaar**, a global marketplace featuring over 250 vendors celebrating the tastes, fashions, and cultures of the African Diaspora, and **BAMboo**, the annual Halloween block party with street performers, carnival games, and costume contests. In the Senior Cinema series, nearly 2500 moviegoers 65 and older enjoyed free matinee screenings of film classics and concession treats.

The annual **Brooklyn Tribute to Dr. Martin Luther King, Jr.**, produced in cooperation with the office of the Brooklyn Borough President and CUNY's Medgar Evers College, celebrated the achievements and struggles of the Civil Rights Movement through musical tributes featuring freedom songs, spirituals, and black liberation anthems. Featured guests included Rutha Harris and Mavis Staples. In conjunction with the opera house tribute, BAM presented film screenings and the community exhibition *Picture the Dream* featuring a series of portraits and collages of Dr. King created by neighborhood children.

BAM partnered with local businesses and organizations to present a variety of Next Wave Festival and Spring Season intimate **community events**. Committed to providing outreach services for audiences and artists, the institution continued **BAM about Brooklyn**. The program publicizes Brooklyn-based venues and artists via BAM's website and weekly email. BAM also provides hundreds of community leaders and groups with complimentary tickets to performances, film screenings, and networking receptions through its outreach initiatives and **Ticket Assistance Program (TAP)**.



New York City Mayor Michael R. Bloomberg, 2009 Tribute to Dr. Martin Luther King Jr. Photo by Scott E. Smith

BAM RHYTHM & BLUES FESTIVAL AT METROTECH

2006

Willie Colón
Amadou and Mariam
The Radiators
The Spinners
Tortured Soul
Billy Paul

2007

Ashford & Simpson
Booker T. & the MG's with special guest Sharon Jones
Lizz Wright
Andy Palacio & the Garifuna Collective
Ledisi
Robert Glasper with special guest DJ Logic
Toumani Diabaté's Symmetric Orchestra
James Cotton Blues Band and the Carolina Chocolate Drops
Double Bill: Eric Roberson and Chrisette Michele
The Itals

2008

Lionel Loueke Trio with Somi
Otis Clay and Ryan Shaw
The Skatalites
Orchestra Baobab

BROOKLYN TRIBUTE TO DR. MARTIN LUTHER KING, JR.

2007

Musical guests:
Rutha Harris
Black Rock Coalition Orchestra
The Full Effect Gospel Ministries Mass Choir
Hip-Hop Performance Artist Will Power

Speakers:

U.S. Senator Charles E. Schumer
Former Governor Eliot Spitzer
Lieutenant Governor David A. Paterson
Attorney General Andrew M. Cuomo
Mayor Michael R. Bloomberg
New York City Council Speaker Christine C. Quinn
Kings County District Attorney Charles J. Hynes

Film screening: *American Blackout*

Picture the Dream community art exhibition: Dr. King portraits created by children from the Rush Education Program based in Clinton Hill, Brooklyn

2008

Featuring Mavis Staples (musical guest & featured speaker) with performances by Gary Anglin and the Voices of CCC

Remarks by:

U.S. Senator Charles E. Schumer
Mayor Michael R. Bloomberg
Brooklyn Borough President Marty Markowitz
Deputy Borough President Yvonne J. Graham
New York City Council Speaker Christine C. Quinn
Congresswoman Yvette D. Clarke
Kings County District Attorney Charles J. Hynes

Film screening: *At the River I Stand*

Picture the Dream community art exhibition: collages by Brooklyn New York City Housing Authority (NYCHA) residents 12 and under

SENIOR CINEMA

2006

Some Like It Hot
Watermelon Man
Uptown Saturday Night

2007

The Taking of Pelham One Two Three
Mildred Pierce
Cotton Comes to Harlem
The Day the Earth Stood Still
The Jerk
St. Louis Blues

2008

His Girl Friday
The Fortune Cookie
Jungle Fever

BAMboo! HALLOWEEN BLOCK PARTY

BAM TICKET ASSISTANCE PROGRAM

BAM ABOUT BROOKLYN

Partners:
Embora Studio
DJ Moni
Chez Bushwick
BRIC Studio

Events:

Reel Sisters of the Diaspora Film Festival
Backyard Couture at Harriet's Alter Ego
LAVADance/Music's Paradise Project

DANCEAFRICA BAZAAR AND PUBLIC PROGRAMS

DanceAfrica Master Classes

DanceAfrica Artists—Willie Torbert (2006) and D. Lammie Hanson (2007)

COMMUNITY RECEPTIONS AND EVENTS

51st (dream) state community dinner at Le Grand Dakar restaurant, with guest artist Sekou Sundiata
Still Life with Commentator listening party, with guest artists Vijay Iyer, Mike Ladd, and Ibrahim Quraishi
Twelfth Night reception co-hosted by Fort Greene based cultural organization UrbanGlass
One Loss Plus reception
Sizwe Banzi Is Dead reception

BROOKLYN BOOK FESTIVAL



Mavis Staples. Photo by Elena Olivo



Education

BAM's Department of Education & Humanities is dedicated to increasing the understanding and appreciation of the arts both for young people and for BAM's adult audiences. In its Education programs, BAM's goal is to provide to students the same caliber of groundbreaking, challenging work from around the world that it offers to adults, with curricula that address important artistic, social, and political issues. In 2006—07, BAM served 187 schools and 22,500 students, teachers, and parents, and in 2007—08, 216 schools and 24,600 people. The department presents an innovative series of performances, films, and artist-in-residence programs: **Generation BAM** for high school students, **kaBAM** for elementary and junior high students, **BAMfamily** performances, and the **BAMkids Film Festival**.

Students attended matinees of mainstage productions: *underground*, *Twelfth Night*, *Edward Scissorhands*, *One Loss Plus*, *Sizwe Bansi is Dead*, *Macbeth*, *End-game*, and more. Each class received an in-school, pre-show preparation workshop from a BAM teaching artist, and engaged in post-performance discussions with the artists. The department presented performances just for student audiences of DanceAfrica visiting companies Ndere

and Ceesay Kujabi and the Bachinab. Additional student audience exclusives were **Poetry 2007** and **2008: Expression in the Right Direction**, and special musical performances by So Percussion and Arturo O'Farrill's Afro Latin Jazz Orchestra as part of Brooklyn Next. In addition to live performances, BAM's unique film literacy series, featuring classic films focused on historical or social issues followed by discussions with experts, was presented each year. As in BAM's live performances for students, each class attending a screening received an in-school, pre-screening workshop and the teachers were given customized study guides.

BAM continued workshop-based artist-in-residence programs for students and/or teachers. These include **Shakespeare Teaches** for teachers and students; after-school workshops for high school students, **Young Critics**, **Young Film Critics**, and **Arts & Justice** (formerly **Courtroom Drama**); and the new **Dancing into the Future** choreography lab. Other in-school residencies included **Brooklyn Reads** in which students learn to read, write, and perform poetry; and residencies in African dance and music (**AfricanDanceBeat**, and **AfricanMusicBeat**). Chuck Davis, founder/artistic director of DanceAfrica, offered master classes, and BAM and Bedford

Stuyvesant Restoration Corporation provided an arts and humanities curriculum to students who performed in *DanceAfrica*. With Folger Shakespeare Library, BAM offered an intensive summer institute in teaching Shakespeare.

BAM partnered with New York University to provide complimentary BAM tickets to NYU students, supplemented by humanities programs, including a master class with actor Patrick Stewart, to increase comprehension of contemporary performing arts. BAMfamily programs included the concerts **Brooklyn Kids Rock!** and **Dan Zanes and Friends**, as part of Brooklyn Next which highlighted the emerging field of bands for and by children. The perennially sold-out **BAMkids Film Festivals**, two-day film marathons, included live musical performances.

EDUCATION 2006—2007 PERFORMANCES

FALL 2006

underground
David Dorfman Dance

Red Hot + RIOT LIVE!
The Music and Spirit of Fela Kuti

SPRING 2007

So Percussion
The Taming of the Shrew
A Watermill Theatre and Old Vic Production by Propeller

Twelfth Night
A Watermill Theatre and Old Vic Production by Propeller

Edward Scissorhands
Matthew Bourne

Poetry 2007: Expression in the Right Direction
Steve Colman
Rha Goddess
Nuttin' But Stringz
Kesed Ragin
Tahani Salah
Kelly Zen-Yie Tsai
Universes
Hosted by Queen Gods

30 Years of DanceAfrica: Ndere Troupe (Uganda)

GENERATION BAM FILMS (GRADES 8-12): SCREENING IDENTITY

FALL 2006

Whale Rider
Commentator: Ataahua Papa

Raising Victor Vargas
Commentators: Peter Sollett and Eva Vives with Dacia Washington

Daughters of the Dust
Commentators: David Pleasant and Marquetta L. Goodwine (Queen Quet)

SPRING 2007

Real Women Have Curves
Commentator: Marinievas Alba

Mask

Commentator: Stephanie Zacharek with Dacia Washington

Tsotsi

Commentator: Byron Hurt

Sundance Institute at BAM
War/Dance

Commentators: Sean Fine, Andrea Nix Fine, and Stephen Rwangyezi

KABAM FILMS (GRADES K-7): SCREENING IDENTITY

FALL 2006

Searching for Bobby Fischer
Commentator: Josh Waitzkin

SPRING 2007

Because of Winn-Dixie
Commentators: Francesca Burgess, Danielle Quisenberry, and Leese Walker

BAMkids Film Festival: Selected Shorts
Commentator: Eric Weil

ART RESIDENCIES AND MASTER CLASSES

AfricanDanceBeat

AfricanMusicBeat

Brooklyn Reads

Master Dance Classes with Chuck Davis

Shakespeare Teaches Students

AFTER-SCHOOL PROGRAMS

Courtroom Drama

DanceAfrica Education Program;
Collaboration with Bedford Stuyvesant Restoration Corporation

Dancing Into the Future:

Young Critics Institute

Young Film Critics

PROFESSIONAL DEVELOPMENT PROGRAMS

Shakespeare Teaches Teachers

African Dance and Music with Chuck Davis

Customized Professional Development Workshops

BAMFAMILY

SPRING 2007

BAMkids Film Festival, with music and animation performances by Gustafer Yellowgold

BrooklynNext

Brooklyn Kids Rock!

With Astrograss, Audra Rox, and Toxic Muffin

EDUCATION

BAMFamily Book Brunch: *Jazz*
Walter Dean Myers and Christopher Myers
Musicians: äj (Andrea and James Rohlehr)

EDUCATION 2007—2008 PERFORMANCES

FALL 2007

One Loss Plus
Daniel Bernard Roumain (DBR)

Ship in a View
Pappa Tarahumara

SPRING 2008

What is Latin Jazz?
Arturo O'Farrill and the Afro Latin Jazz Orchestra

Macbeth
Chichester Festival Theatre

Poetry 2008: Expression in the Right Direction
Kahlil Almustafa
DJ Captain Planet
Vanessa Hiday
Zora Howard
Baruch "Baba" Israel and Leslie "ButtaFlySoul" Taylor
La Bruja
Janine Simon
Urbintel (Akil Dasan, Anthony Morales and Leslie "ButtaFlySoul" Taylor)
Hosted by Queen GodIs

Sizwe Banzi Is Dead
The Baxter Theatre Centre

Endgame
Directed by: Andrei Belgrader

*DanceAfrica 2008: Bridge to Cultural
Rejuvenation & Enlightenment*
Ceessay Kujabi and the Bachinab (The Gambia)

GENERATION BAM FILMS (GRADES 8-12): SCREENING LITERARY ADAPTATIONS

FALL 2007

October Sky
Commentator: Roy Lee Cooke with Vernice Miller

Hamlet
Commentator: Michael Almereyda

Oliver Twist
Commentator: Ned Eisenberg

SPRING 2008

Pan's Labyrinth
Commentator: Stephanie Zacharek

Hip-Hop: Beyond Beats and Rhymes
Commentators: Byron Hurt and Monifa Akinwale-Bande with Samara Gae

Sundance Institute at BAM
FLOW: Love of Water
Commentators: Irena Salina, Yvette Tomlinson, and Deborah Lapidus

KABAM FILMS (GRADES K-7): SCREENING INSPIRATION

FALL 2007

October Sky
Commentator: Roy Lee Cooke

SPRING 2008

Akeelah and the Bee
Commentators: Francesca Burgess, Tamela Aldridge, and Elena Mulrone

BAMkids Film Festival: Selected Shorts
Commentators: David Levy and Barbara Parks

The Secret Garden
Commentators: Elena Mulrone and Alexa Polmer

ART RESIDENCIES AND MASTER CLASSES

AfricanDanceBeat

AfricanMusicBeat

Brooklyn Reads

Master Dance Classes with Chuck Davis

Shakespeare Teaches Students

AFTER-SCHOOL PROGRAMS

Arts and Justice

DanceAfrica Education Program:
Collaboration with Bedford Stuyvesant
Restoration Corporation

Dancing Into the Future

Young Critics

Young Film Critics

PROFESSIONAL DEVELOPMENT PROGRAMS

Folger/BAM Shakespeare Summer Institute

Shakespeare Teaches Teachers

Customized Professional Development Workshops

BAMFAMILY

SPRING 2008

10th Annual BAMkids Film Festival
With live performances by Care Bears on Fire and Tiny
Masters of Today

Dan Zanes and Friends
Dan Zanes

BAMfamily Book Brunch: *The Invention of Hugo Cabret*
Brian Selznick with Guy Klucevsek
Musician: Muhamadou Salieu Suso



Paul Simon and Philip
Glass in conversation.
Photo by Scott E.
Smith

BAM's Humanities programs are an opportunity for audiences to enrich their experience of BAM productions by listening to and engaging in discussion with artists in the Next Wave Festival and Spring Season. Over this period, 39 **BAMdialogues**—Q&As with BAM artists moderated by other artists, critics, or scholars—and five **BAMtalks**, panel discussions and conversations on topics relevant to the season's productions, were offered.

BAMdialogues included discussions after David Dorfman Dance's *underground* about the political activism of the 1960s Weather Underground; a conversation between director Declan Donellan (*Cymbeline*) and playwright Tony Kushner; one on art and spirituality between *Borrowed Light* collaborators Tero Saarinen, choreographer, and Joel Cohen (Boston Camerata's artistic director) moderated by Meredith Monk; a conversation between actor Fiona Shaw, director Deborah Warner, and Anne Bogart (SITI Company) on the set of *Happy Days*; and Professor James Shapiro (Columbia University) with Patrick Stewart and other cast members of *Macbeth*.

The BAMtalk "Re-imagining Ibsen for the 21st Century" was held in conjunction with the production *The Wild Duck*, marking the centennial of the playwright's

death with a discussion on Ibsen's legacy with scholars and artists (including director Eirik Stubø), and included performances of contemporary dance, theater, and puppetry inspired by Ibsen. A panel discussion of Brooklyn artists, presenters, and critics helped launch the new Brooklyn Next series. *Epic Journeys*, in conjunction with the presentation of *Cast No Shadow*, convened visual artist/filmmaker Isaac Julien, choreographer Russell Maliphant, artist Shirin Neshat, and PERFORMA's RoseLee Goldberg to discuss geographic exploration, identity, and globalized world culture. In the Spring Season 2008, a BAMtalk entitled *Theater in South Africa: The New Millennium* assembled actors/playwrights from *Sizwe Banzi Is Dead*—John Kani and Winston Ntshona—with scholars/artists to discuss how theater has changed in South Africa since apartheid, moderated by Anne Cattaneo. Paul Simon and Philip Glass discussed art, life, and the creative process in a BAMtalk marking Paul Simon's residency at BAM: *Love in Hard Times—The Music of Paul Simon*.

BAM's **Eat, Drink & Be Literary** series, presented in partnership with the National Book Awards, brought major authors to BAMcafé for intimate dinners, readings, and discussions. Authors included Zadie

Smith, Fran Lebowitz, and Chinua Achebe. The evenings begin with a buffet and live music. Author readings are followed by interviews about their creative process and artistic themes, then an audience Q&A and book signing. The **BAMfamily Book Brunch** is a junior version of Eat, Drink & Be Literary, designed for children eight to twelve and their families. In 2007, the program featured author Walter Dean Myers and illustrator Christopher Myers and their book *Jazz*, and in 2008 the guest was Brian Selznick, the author/illustrator of *The Invention of Hugo Cabret*, who also screened some of Georges Méliès silent films that inspired his unique book, accompanied by the live accordion of Guy Klucsevsek.

FALL 2006

BAMDIALOGUES

- The End Of Cinematics*
Mikel Rouse with John Schaefer
- Mycenæan*
Carl Hancock Rux with Karin Coonrod
- Nine Hills One Valley*
Ratan Thiyam with Sudipto Chatterjee
- Violet Fire: A Multimedia Opera*
Jon Gibson, Terry O'Reilly, Miriam Seidel with Jill Jonnes and Alan J. Friedman
- impermanence*
Meredith Monk with Joseph V. Melillo
- the 51st (dream) state*
Sekou Sundiata and cast with Laura Flanders
- underground*
David Dorfman Dance with David Kyuman Kim and Bernardine Dohm
Jawole Willa Jo Zollar
Randy Martin
- La Tempête (The Tempest)*
Michel Lemieux, Victor Pilon, Denise Guilbault with Ellen Lampert-Greaux
- Hedda Gabler*
Thomas Ostermeier with Una Chaudhuri
- Still Life with Commentator: An Oratorio*
Vijay Iyer, Michael Ladd, Ibrahim Quraishi with Limor Tomer
- Don Juan in Prague*
David Chambers with Arnold Aronson

BAMTALKS

Re-Imagining Ibsen for the 21st Century
Marvin Carlson, Eirik Stubø, Joan Templeton
Live excerpts from contemporary performances inspired by Ibsen
Laurence Maslon, moderator

SPRING 2007

BAMDIALOGUES

- Death in Venice*
John Neumeier with Anna Kisselgoff
- Three Atmospheric Studies*
William Forsythe with Kendall Thomas
- Edward Scissorhands*
Matthew Bourne with Wendy Perron
- The Taming of the Shrew*
Twelfth Night
Edward Hall with Ron Rosenbaum
- The Magic Flute*
William Kentridge with Dan Cameron
- Cymbeline*
Declan Donnellan with Tony Kushner
- Dense Terrain*
Doug Varone with Suzanne Carbonneau

BAMTALKS

Brooklyn Next
Robert Elmes, Amy Linden, Matthew Morgan, Darrell McNeill
Larry Blumenfeld, moderator

EAT, DRINK & BE LITERARY

Presented in partnership with the National Book Awards

- Authors:
Francine Prose
Pete Hamill
Michael Cunningham
Jonathan Franzen
Cynthia Ozick
Zadie Smith
Sandra Cisneros
Gary Shteyngart
Kurt Andersen
- Moderators:
Jessica Hagedorn
Brigid Hughes
- Musicians:
äj (Andrea and James Rohlehr)
Alex Solomon
Loren Stillman and Scott Lee
Rubin Kodheli, Alex Hamlin, and Ryan Ferreira
Carl Riehl
Scott Pearson
Stephen Saperstein
David Abeles
Rubin Kodheli, Andrea Fisher, and Liberty Ellman
- Steinhardt Jewish Heritage Festival at BAM*
Emerging Jewish Writers Panel
Shalom Auslander
Jennifer Gilmore
Aaron Hamburger
Rachel Kadish
Alana Newhouse, moderator

FALL 2007

BAMDIALOGUES

- Wild Cursive*
Lin Hwai-min with Anna Kisselgoff
- Kronos Quartet: More Than Four*
Kimmo Pohjonen, Samuli Kosminen, and Erik Sanko with John Schaefer
- Hotel Cassiopeia*
Anne Bogart and Charles L. Mee
- Compañía Nacional de Danza*
Nacho Duato with Valerie Gladstone
- Misuse liable to prosecution*
John Jasperse and Zeena Parkins with Gus Solomons jr.
- Cast No Shadow*
Isaac Julien and Russell Maliphant with José Muñoz
- Borrowed Light*
Tero Saarinen and Joel Cohen with Meredith Monk
- Three*
Ohad Naharin with Wendy Perron
- One Loss Plus*
Daniel Bernard Roumain (DBR) with Toni Blackman
- Ship in a View*
Hiroshi Koike with Carol Martin

Lulu
Michael Thalheimer with Tom Sellar

The Gate
Tan Dun and Michael Christie

BAMTALKS

Epic Journeys
Isaac Julien, Russell Maliphant, Shirin Neshat
RoseLee Goldberg, moderator

SPRING 2008

BAMDIALOGUES

- Happy Days*
Fiona Shaw and Deborah Warner with Anne Bogart
- Macbeth*
Rupert Goold with Oskar Eustis
- Macbeth*
Patrick Stewart and cast with James Shapiro
- Benguelé and Breu*
Rodrigo Pederneiras with Barbara Browning
- Sizwe Bansi Is Dead*
John Kani and Winston Ntshona with Anne Cattaneo
- Endgame*
Andrei Belgrader, Max Casella, Alvin Epstein, Elaine Stritch, John Turturro with Robert Brustein
- Il matrimonio segreto*
Jonathan Miller with Marc Scorca

BAMTALKS

Theater in South Africa: The New Millennium
Awam Amkpa, Daniel Banks, Nadia Davids, John Kani, Mannie Manim, Winston Ntshona
Anna Cattaneo, moderator

Paul Simon and Philip Glass: A Conversation

EAT, DRINK & BE LITERARY

Presented in partnership with the National Book Awards

- Authors:
George Saunders
Deborah Eisenberg
André Aciman
Fran Lebowitz
Peter Carey
Shalom Auslander
Paul Muldoon
Chinua Achebe
- Moderators:
Harold Augenbraum
Edward Hirsch
Bradford Morrow
Aoibheann Sweeney
- Musicians:
Sojourner
Eric Kurimski
Rubin Kodheli and Ryan Ferreira
Scott Pearson
Carl Riehl
Steven Saperstein and Nick Loss-Eaton
The Browning-Gilchrest Duo
äj (Andrea and James Rohlehr)



Judith Jamison in Alvin Ailey's *Prodigal Prince*, 1968. Photo: Sigrid Estrada

Archives

HAMM ARCHIVES CENTER

The Hamm Archives Center, named for Charles and Irene Hamm in 2007, documents BAM's astonishingly rich 150-year history. The Hamm Archives offers the opportunity to explore BAM's unique heritage and witness innovation across three centuries. Thousands of photographs, programs, articles and reviews, and printed items such as posters and brochures reflect the evolution of modern performance. Board minutes, correspondence, and other administrative and production papers track the trajectory of the US' oldest performing arts institution.

The Hamm Archives Center preserves and makes available materials of enduring historical value, dating back to the 1860s. Selected materials are being digitized to ensure wider, long-term access. The Hamm Archives fulfills approximately 600 requests annually from within BAM and

externally. Staff members access it as a resource for exhibitions, research, and publications. The Hamm Archives also documents BAM's early history as a major Brooklyn gathering place for cultural and community events, including presidential speeches and a sanitary fair in 1864. The fair, held at the Academy's original Montague Street location, raised funds for the United States Sanitary Commission to support the troops, selling donated goods and providing entertainment.

The Hamm Archives houses a particularly strong collection reflecting contemporary performance from the last 40 years, especially from the flagship Next Wave Festival and Spring Season. Many of the artists who have performed at BAM have become legends of performance, and items from their early appearances chart their ascendance and demonstrate the significance of the institution's support. The Hamm Archives also provides tours

of BAM, organizes exhibits in conjunction with seasonal programming, and oversees projects of institutional importance such as oral histories and executive documentation, including the completion of the Harvey Lichtenstein Oral History Project, which documents the 32-year career of Lichtenstein, the institution's previous president and executive producer.

HISTORY

The strong need for a formal BAM archives was first identified in 1995 when a search for records, photographs, and other materials in conjunction with major institutional events revealed that items of historical value were scattered in various locations throughout BAM buildings and New York City, and in serious danger of being lost forever. In response, BAM created the archives to both collect and preserve these materials and make them available to students, scholars, cultural organizations, historians, artists, press representatives, and BAM staff.

Construction at BAM in 1996 uncovered more forgotten boxes, and in 1997 the Brooklyn Public Library gave the archives materials dating back to the Civil War. Archival holdings include BAM's administrative records; lectures from nineteenth-century intellectuals such as Ralph Waldo Emerson; thousands of photographs; and performance playbills from shows featuring the likes of Sarah Bernhardt, Edwin and John Wilkes Booth, Enrico Caruso, Isadora Duncan, Martha Graham, Merce Cunningham, and Philip Glass. The materials held in the Hamm Archives offer insight on the development of the institution, the changing face of New York City, and the evolution of the performing arts in the United States.

For more information or to access the collection, please contact the Hamm Archives at Archives@BAM.org.

Major support for the Hamm Archives Center comes from Charles J. & Irene F. Hamm and the Leon Levy Foundation.



The original Opera House during the Sanitary Fair, 1864



Cloud Gate Dance Theatre, *Songs of the Wanderers*, 2000

BAM STAFF

Karen Brooks Hopkins

President

Joseph V. Melillo

Executive Producer

Alice Bernstein

Executive Vice President

William Lynch

Vice President for Development

Lisa Mallory

Vice President for Marketing & Communications

Lynn M. Stirrup

Vice President, Planning & Executive Director, Special Campaigns

Keith Stubblefield

Chief Financial Officer and Vice President of Finance & Administration

PRESIDENT'S OFFICE

David Reilly

Project Coordinator

Marisa Menna

Administrative Assistant

BAM ROSE CINEMAS

Efi Shahar

Cinema Executive Manager

Michael Katz

Hunter Webb

Projectionists

BAMCINÉMATEK

Florence Almozini

Program Director

Ann Yershov

BAMcinémathek Project Producer

Aisling Yeoman

Marketing & Publicity Associate

Troy Dandro

Marketing Manager

Molly Gross

Senior Publicity Manager

Adrienne Mancia

Curator at Large

Jake Perlin

Program Associate

EXECUTIVE PRODUCER'S OFFICE

Amy Rogoway

Program Coordinator

Galit Seifan

Administrative Assistant

Sharon Lehner

Archivist

Maggie Low

Processing Archivist

Leina Bocar

Archives Assistant

EDUCATION & HUMANITIES

Suzanne Youngerman

Director, Department of Education & Humanities

John P. Tighe

Assistant Director

John S. Foster

Education Manager

Jennifer Leeson

Administrative Coordinator

Nathan Gelgud

Box Office Manager/

Program Associate

Aquilah Gantt

Program Associate

Steven Serafin

Humanities Program Consultant

LEAD INSTRUCTORS

Christal N. Brown

Dancing into the Future

Joshua Cabat

Young Film Critics

Michael LoMonico

Shakespeare Teaches Teachers

Michael Orth

Young Critics

Pat Hall

BAM/Restoration DanceAfrica Coordinator

Cey Adams

Renita Martin

Arts & Justice Program

TEACHING ARTISTS

Tamela Aldridge, Jennifer Armas,

Christal N. Brown, Chia-Ti Chiu, Ariel

de la Portilla, Baraka de Soleil, Rujeko

Dumbutshena, Imani Faye, Samara

Gaev, Alex Garcia, Ingrid Gordon, Pat

Hall, Baba Israel, Chanan Judson,

Nicole Kempskie, Heather Lester,

Khris Lewin, Farai Malianga, Hector

Morales, Pamela Patrick, Alexa Pol-

mer, Godfrey L. Simmons, Jr., Navida

Stein, Leese Walker

PROGRAMMING & CURATORIAL

Darrell M. McNeill

Associate Producer of Music

Programming

Danny Kapilian

Music Consultant

GENERAL MANAGEMENT

Patrick J. Scully

General Manager

Nick Schwartz-Hall

Project Line Producer

Rohit Kapoor

Rental and Event Manager

Amber Rooney

Project Manager

Ryan Meisheid

Fiscal Coordinator

Katherine Blankensip

Administrative Assistant

PRODUCTION

Neil Kutner

Production Manager

Don Coleman

Associate Production Manager

Paul Bartlett

Josh Escajeda

Audrey Hoo

Rebecca Zuber

Production Supervisors

Tess James

Production Coordinator

Sara Daniels

Administrative Coordinator

STAGE CREW

Thomas Paulucci

Crew Chief

Cyrus Similly

Head Carpenter, OH

Timothy Fuller

Flyman, OH

James D'Adamo

Head Electrician, OH

Jack Gelbart

Electrician, OH

Bill Horton Jr.

Master of Properties, OH

Carl Wurzbach

Sound Engineer, OH

James Kehoe

Head Carpenter, HT

John Manderbach

Head Electrician, HT

Joe Holler

Master of Properties, HT

Alison Dabdoub

Sound Engineer, HT

Oscar Gruchalski

Utility Man

Richard Wurzbach

Utility Man

Mary Lou Houston

Wardrobe Supervisor

ARTIST SERVICES

Mary Reilly

Director of Artist Services

Rachel Katwan

Artist Services Manager

Dominique Phelps

Stacey Dinner

Artist Services Representatives

THEATER MANAGEMENT

Christine M. Gruder

Theater Manager

John L. Jones

Associate Theater Manager

Sonia Clayton

Jacqueline David

Leroy Houston

Theater Staff Supervisors

Patrick Conlon

BAMbus Manager

BUILDING OPERATIONS

Olric L. Francis III

Director of Building Operations

Nicole Pile

Facilities Manager

Tashaunna Brathwaite

Administrative Assistant

Daniel J. Dier

Building Services Assistant

HVAC & REPAIR SERVICES

Lazzaro Curato

Anthony Shields

HVAC Supervisors

Angel Ovalles

Courtney Harris

HVAC Maintainers

Carl Blango

Danny Curato

HVAC Assistant Maintainers

SECURITY

Esteban Quinones

Security Manager

Melvin Patterson

Supervisor

Kenneth Aguilera

Collie Dean

Senior Attendant Guards

Terrence Caldeira

Marlon Desouza

Alvina Dixon

Aubrey Gravesande

Sven Shuffler

Teonia Smith

Andel Thomas

Michael Whyte

Attendant Guards

CUSTODIAL SERVICES

Ramon Cabassa

Supervisor

Calvin Brackett

Johanna Brown

Ludlow Chamberlain

Wade Gardner

Harold Heath

Brezhnev Mesa

Ramona Perez

Ron Rathan

Custodians

HARVEY THEATER

Davis Wallace

Building Supervisor

Lionel Stevens

Assistant Building Supervisor

Rendell Blount

Security Supervisor

Ismael Colon

Custodial Supervisor

DEVELOPMENT

Barbara Cummings

Director of Development

Richard Serrano

Research Manager

Monika Jouvart

Business Process Director

Kelly Paige Van Valkenburg

Development Coordinator

Richel Cuyler

Development Assistant

David Harper

BAMart Curator and

Sales Manager

GRANTS

Kirsten Munro

Director of Grants

Martha Pitts

Grants Manager

Danielle Heinemeyer

Grant Writer

Victoria Lynford

Grants Coordinator

Melissa Srinovich

Grants Assistant

SPONSORSHIP

Chantal Bernard

Sponsorship Director

Laurence Lombart

Sponsorship Manager

Peter Squires

Sponsorship Coordinator

FISCAL

Kozue Oshiro

Fiscal & Operations Director

Akiko Kawamoto

Fiscal Project Coordinator

Tamisha Ralph

Claudia Bailey

Fiscal Coordinators

INDIVIDUAL GIVING

Katherine King

Manager of Membership

Programs

Adam Sachs

Membership Coordinator

Aiste Jankauskaite

Membership Assistant

Britta Faust-Burak

Manager of Patron Programs

PATRON SERVICES

Angela Romualdez

Director of Patron Services

Ramzi Awn

Patron Services Coordinator

Daniel Lau

Ryan Morrison

Patron Services Assistants

SPECIAL EVENTS

Glenn Alan Stiskal

Director of Special Events

Jennifer Rajotte

Special Events Manager

Margaret Breed

Special Events Coordinator

James Vause

Special Events Assistant

PLANNING & SPECIAL CAMPAIGNS

Lydia Agnese

Executive Assistant

Denis Azaro

Endowment & Planned

Giving Director

Peter Conroy

Campaign Director

Laura Grady

Board Relations Coordinator

Franklin Teagle

Endowment Coordinator

MARKETING & COMMUNICATIONS

BOX OFFICE

Fred Dorso

Treasurer

Marsha Rosenberg

First Assistant Treasurer

Kevin McLoughlin

Charlie Dolce

Russell Grier

Victor Jouvart

Assistant Treasurers

COMMUNICATIONS

Sandy Sawotka

Director of Communications

Fatima Kafele

Associate Director

of Communications

Susan Yung

Publications Manager

Adriana Leshko

Publicity Manager

Phaedra Athanasiou

Publicist

Matthew Yeager

Amanda Wright
Budget Manager
Cynthia Smith
Payroll Manager
Susan Schatzker
Financial Reporting Manager
Seon Gomez
Accounting Associate
Brian Gee
Accounts Receivable Coordinator
Elyse Piker
Budget Analyst

CAPITAL PROJECTS

Toby Rappaport
Director of Capital Projects
Matthew Baclini
Capital Projects Analyst
Nicole Morgan
Capital Projects Assistant

GOVERNMENT & COMMUNITY AFFAIRS

Tamara McCaw
Director of Government & Community Affairs
Dewonnie Frederick
Community Affairs & Bazaar Coordinator

HUMAN RESOURCES

Seth Azizollahoff
Director of Human Resources
Farhana Ahmed
Human Resources Generalist
Diana Frazier
Receptionist/
Associate Recruiter

Zyaire Boyce
Jesus Morales
Human Resources Assistants

INFORMATION TECHNOLOGIES

John Kit
Director
Thomas Brown
Project Manager
William Allen Lee
Application & Development Manager
Ira Sibulkin
IT/Network Manager
Timothy Assam
System Administrator
Svetlana Mikhalevskaya
Jason Q. Minnis
Program Analysts
Erwin Quito
Network Analyst
Lesley Hunter
Administrative Coordinator

ARCHIVAL TAPING

Character Generators

AUDIENCE RESEARCH & ANALYSIS

George A. Wachtel

BOOKSELLER

Brownstone Books

EUROPEAN PRODUCTION REPRESENTATIVE

On Tour Ltd., Roger Chapman

FILM BUYER

Jeffrey Jacobs
Jacobs Entertainment, Inc.

IMMIGRATION COUNSEL

Jonathan Ginsburg, Fettman, Tolchin and Majors, PC

INSURANCE BROKER

Dewitt Stern

LABOR COUNSEL

Proskauer Rose LLP

LEGAL COUNSEL

Ronald E. Feiner PC

MEDICAL CONSULTANT

Ahmar Butt, MD

RESTAURATEUR

Great Performances

SENIOR CURATOR, NEXT WAVE ART

Dan Cameron

as of Dec 31, 2008

BAM NEXT STAGE CAMPAIGN

BAM sincerely thanks its many contributors listed below whose gifts over the past year are greatly appreciated.

FISCAL YEAR 2007

\$500,000 OR MORE

Brooklyn Borough President's Office
Marty Markowitz
Brooklyn Delegation of the
New York City Council
Jeanne Donovan Fisher (E) (V)
Estate of Richard B. Fisher (E)
Judith R. & Alan H. Fishman (E) (V)
The Ford Foundation (E)
The Kovner Foundation (V)
New York City Department of
Cultural Affairs
New York City Department of
Design and Construction
The Peter Jay Sharp Foundation (E)
The SHS Foundation (E) (V)

\$100,000 OR MORE

Altria Group, Inc.
American Express Company
Bank of America
Bloomberg
The Booth Ferris Foundation
William I. Campbell &
Christine Wächter-Campbell
Carnegie Corporation of New York
Cunard Line
Aashish & Dinyar Devitre (E) (NS)
Irene Diamond Fund (E)
Charles & Valerie Diker (V)
Dormitory Authority of the
State of New York
Forest City Ratner Companies
The Howard Gilman
Foundation (E)
Agnes Gund & Daniel Shapiro (V)
Charles J. & Irene F. Hamm (E)
The Harkness Foundation
for Dance
Stephanie & Tim Ingrassia (E)
JPMorgan Chase
Carole & Irwin Lainoff (E) (NS)
Diane & Adam E. Max (E) (V)
Mr. & Mrs. Hamish Maxwell (E) (NS)
The Andrew W. Mellon Foundation
New York Marriott at the
Brooklyn Bridge
New York State Council on the Arts
New York State Music Fund
The New York Times Community
Affairs Department
Jim & Mary Ottaway (V)
R/GA
Rockefeller Brothers Fund, Inc.
The Fan Fox & Leslie R.
Samuels Foundation, Inc.
The Shubert Foundation, Inc.
Skirball Foundation
Ronald P. Stanton
The Starr Foundation
Joseph S. and Diane H.
Steinberg Charitable Trust
Time Warner Inc.
Visa U.S.A., Inc.
Nora Ann Wallace & Jack
Nusbaum (E) (NS)
The Norman & Rosita Winston
Foundation

\$50,000 OR MORE

Altman Foundation
Susan Baker & Michael Lynch
(NS)
The Bank of New York Mellon
Corporation
CA, Inc.
Calyon Crédit Agricole CIB
Citigroup Foundation
Con Edison
Consulate General of Belgium
in New York
The Gladys Kriebel Delmas
Foundation
Deutsche BankDLA Piper US LLP
Empire State Development
Corporation
Susan L. Foote &
Stephen L. Feinberg
Estate of Madison S. Finlay (E)
Fleurs Bella
Horace W. Goldsmith
Foundation
The Florence Gould
Foundation
Semone Grossman,
Andrew Grossman,
GGMC Parking, LLC (PC)
The Francena T. Harrison
Foundation Trust
Rita Hillman (NS)
HIP & Freelancers Union
Independence Community
Foundation
KeySpan
The Lepercq Foundation
Marian Goodman Gallery
James McLaren &
Lawton Fitt (NS) (E)
MetLife Foundation
Ahrin & Ligaya Mishan
The Ambrose Monell
Foundation
National Endowment for
the Arts
Samuel I. Newhouse
Foundation, Inc.
Barbro Osher Pro Suecia
Foundation
Permanent Representation of
Belgium to the U.N.
Polish Cultural Institute &
Ministry of Culture and
National Heritage of Poland
The Reed Foundation, Inc. (V)
The Robert Sterling Clark Foundation
Martha A. & Robert S. Rubin (V)
May and Samuel Rudin
Family Foundation, Inc.
Estate of Harriet L. Senz
Amy W. Schulman &
David E. Nachman
Sovereign Bank
Harold and Mimi Steinberg
Charitable Trust
Judy & Michael Steinhardt (V)
Target
Verizon Communications
The Isak and Rose Weinman
Foundation, Inc. (E)

The Robert W. Wilson
Foundation, Inc. (V)

\$25,000 OR MORE

Edith and Frances Mulhall
Achilles Memorial Fund
Asia Society
Bacardi
Rose M. Badgeley Residuary Charitable Trust
Diana Barrett & Robert Vila
for The Fledgling Fund (NS)
Mr. & Mrs. Sid R. Bass (NS)
Cinécitta Holding
The Clarett Group
The Dermot Company, Inc.
Barry M. Fox
Goldman, Sachs & Co.
The Grand Marnier Foundation
Rita E. & Gustave M. Hauser
Charles Hayden Foundation
Heckscher Foundation for Children
HSBC Bank USA, N.A.
Kaufmann, Feiner, Yamin,
Gildin & Robbins
KeySpan Foundation
Dan Klores (NS)
The Emily Davie & Joseph S.
Kornfeld Foundation
Jean-Pierre & Rachel Lehmann (NS)
Sarah G. Miller &
Frank L. Coulson (NS)
Morgan Stanley
Henry and Lucy Moses Fund, Inc.
New York State Assembly
Brooklyn Delegation
New York State Office of
Parks, Recreation and
Historic Preservation
The Jerome Robbins
Foundation, Inc. (E)
Blanchette Hooker Rockefeller Fund
Jonathan F.P. & Diana V.C. Rose (NS)
Ruder Finn, Inc.
The Harold and Mimi
Steinberg Charitable Trust
Joseph A. Stern
Trust for Mutual Understanding
Vaughn C. Williams (NS)
Yamaha Artist Services
Estate of Martha Zalles

\$10,000 OR MORE

The Aeroflex Foundation
The Andy Warhol Foundation
for the Visual Arts
Asian Cultural Council
AT&T Foundation
Atlantic Realty Partners, LLC
The Barker Welfare Foundation
Beaute Prestige International
Roger & Brook Berling (NS)
Susan V. Berresford
British Council USA
The Brooklyn Brewery
The Buck Family Foundation
The Louis Calder Foundation
Jennifer Carlson & Andrew Zolli
Mary Flagler Cary Charitable Trust
Mr. & Mrs. Henry
Christensen III (E) (NS)

NEXT STAGE CAMPAIGN

Cicala Filmworks
The Aaron Copland Fund for Music, Inc.
Credit Suisse
The Cultural Heritage Preservation Fund
Beth Rudin DeWoody Doubleday Broadway Publishing Group
Brendan & Barbara Dugan (E) (NS)
Etant donnés: The French American Fund for the Performing Arts, a program of FACE
Mallory & Elizabeth Factor (NS)
Martin & Linda Fell (E) (NS)
Film Movement
The Cultural Services of the French Embassy in the U.S.
Fribourg Family Foundation
Gap (Product) Red
Ann and Gordon Getty Foundation
Goethe-Institut New York
John M. Goldsmith (NS)
William & Mary Greve Foundation
The Green Fund Inc.
Regina M. Griffin (NS)
The Grodzins Fund
The Marc Haas Foundation
HBO
IATSE - Theatrical Stage Employees Local 4 (NS)
Instituto Cervantes New York Jewish Life Network
The Jordan Company, L.P.
William Josephson & Barbara Haws (NS)
Robin & Edgar Lampert (NS)
The Peck Stacpoole Foundation
The Laura Pels International Foundation for Theater
The Leon Levy Foundation
Phyllis & Harvey Lichtenstein (NS)
John Lipsky & Zsuzsanna S. Karasz (E)
Frederick Loewe Foundation
Bella Meyer & Martin Kace (CC)
Edward L. Milstein (NS)
Edward S. Moore Foundation
Donald R. Mullen Jr. (NS)
New England Foundation for the Arts
New York City Dept. for the Aging
The New York Times Company Foundation, Inc.
NYSE Foundation
Pfizer Inc.
The Picower Foundation
The Tony Randall Theatrical Fund, Inc.
Billy Rose Foundation, Inc.
Helena Rubinstein Foundation
Rush Philanthropic Arts Foundation
Santander
Sharp Electronics Corporation
The Evelyn Sharp Foundation
SI Bank & Trust Foundation
Simpson Thacher & Bartlett LLP
Mr. & Mrs. Howard Solomon (NS)
The Spilka Family Foundation Inc.
Starry Night Fund of the Northern Trust Charitable Giving Program
Jean Stein, JKW Foundation (NS)
Taipei Cultural Center of TECO in NY
Tom Thomas & Conrad

van Tiggelen
Jane M. Timken (NS)
Jakob & Lisa Trollbäck (E) (NS)
Michael Tuch Foundation, Inc.
Wendy vanden Heuvel, JKW Foundation (NS)
west elm
Adam R. Wolfensohn & Jennifer Small (NS)
Wolfensohn Family Foundation (NS)
\$5,000 OR MORE
Academy Foundation of the Academy of Motion Pictures Arts & Sciences
American-Scandinavian Foundation
Ashley & Vincent Andrews
Axe-Houghton Foundation
Anne H. Bass (NS)
The Howard Bayne Fund (NS)
Tony Bechara (NS)
Frank Borsa & Jeffrey Wallace (NS)
Frances Bowes (CC)
Kevin Brine & Jessica Smith (NS)
British Council
Cablevision Systems Corporation
Neil & Kathleen Chrisman (NS)
Colgate-Palmolive Company
Creative Capital Foundation
Mary Sharp Cronson
Tony & Lawrie Dean (NS)
The DiPaolo Foundation
Chuck Dorr
Max & Victoria Dreyfus Foundation
Fannie Mae
Steven & Susan Felsher (CC)
Ronald Finkelstein
R. Britton Fisher & Lynn M. Stirrup (CC)
Forbes Inc. (NS)
Susan & Michael Furman (NS)
David & Susie Gilbert
Barbara L. Goldsmith
Paul Gottlieb & Sara Adler (NS)
Mary Livingston Griggs & Mary Griggs Burke Foundation
Harcourt, Inc.
Penn & Diane Holsenbeck
Frederick J. Iseman (NS)
Italian Cultural Institute of New York and Consulate General of Italy in New York
John Wiley & Sons
Mary Kantor
Miriam Katowitz & Arthur Radin (NS)
James E. & Marcia Kelly (NS)
Anna Kuzmnik-Sampas
Mark & Lisa Lane
Raymond Learsy & Myra Bucksbaum
Lehman Brothers
Abby & Mitch Leigh (NS)
The Liman Foundation Inc.
Lion In the Sun
Liz Claiborne Inc.
The M&T Bank
Maharam
The Martin Bucksbaum Family Foundation
Kathryn McAuliffe & Jay L. Kriegel (NS)
Scott C. McDonald (NS)
The McGraw-Hill Companies
W.P. McMullan & Rachel McPherson (NS)
Medgar Evers College
The Mendik Company
Merrill Lynch & Co. Foundation, Inc.

Martin & Selma Mertz (NS)
Richard W. & Barbara F. Moore (NS)
Narciso Rodriguez LLC
Mr. Alex G. Nason (NS)
Talya Nevo-Hacohen (NS)
Newmark Knight Frank Retail
Everett Ortner
William & Laura Taft Paulsen (NS)
Loretta & Bill Perlmuth (NS)
Richard Peterson & Ellen Flamm (NS)
Eugene & Diana Elzey Pinover
Rajika & Anupam Puri (NS)
David L. Ramsay, M.D., (NS)
Michael Rena
Mr. & Mrs. Theodore C. Rogers (NS)
Andy Romer (NS)
Charles & Mildred Schurmacher Foundation
Mr. & Mrs. Richard J. Schwartz (NS)
Mark Alan Seliger
Theodore Shen (NS)
Siddhartha Guatama Shukla
Elizabeth Sidamon-Eristoff (NS)
Snow & Graham
Society of Friends of Belgium in America
Ellen & Samuel Sporn (NS)
Seth Sprague Educational & Charitable Foundation
Stop & Stor Charitable Fund
Hon. Roger Tilles
Tishman-Speyer Properties, Inc.
Peter C. Trent (NS)
TTSL Charitable Foundation/Ted Tai-Sen Lin & Sharon Chang
Two Trees Management Company
UBS Wealth Management
Margo & Anthony Viscusi
VisitBritain
The Walt Disney Company
Alan & Svetlana Wasserman (NS)
The Richard & Gertrude Weinger Foundation
Judge Franklin R. Weissberg & Judge Marilyn G. Diamond (E) (NS)
David K & Henrietta Whitcomb
Francis Williams (NS)
Nina Winthrop (NS)
Mr. & Mrs. James D. Wolfensohn
Claire Wood (NS)
Carol Yorke & Gerard Conn (NS)
James & Pia Zankel
Matthew & Myra Zuckerbraun (E) (CC)
\$2,500 OR MORE
Donald Allison & Sumiko Ito (CC)
John & Diana Alschuler (CC)
Matthew & Krista Annenberg (CC)
Rina Anoussi & Takis Anoussis (CC)
Jody & John Arnhold (CC)
Asante Partners LLC
Daniel Baldini
Benjamin & Leah Barber (CC)
Nancy Barber
Becton, Dickinson and Company
George E. Berger & Associates LLC
Raphael & Jane Bernstein/
Parnassus Foundation (CC)
DJ R. Bruckner (CC)
Capezio-Ballet Makers Dance Foundation
Constance Cincotta (PC)
Joan Hardy Clark (CC)

Frederick Cohen (PC)
Ranny Cooper & David Smith (CC)
The Corcoran Group
The Cowles Charitable Trust
Constans Culver Foundation
Catherine G. Curran (CC)
Elizabeth de Cuevas (CC)
Hester Diamond & Ralph Kaminsky (CC)
Dwight & Ann Ellis (PC)
Cristina Enriquez-Bocobo (CC)
Therese M. Esperdy (CC)
Seth & Sara R. Faison (CC)
Kathryn T. Farley (CC)
Fiona & Harvey Fein (CC)
Steven & Susan Felsher (CC)
Charles H. Fish (E)
Joan Gottfried (CC)
Gordon & Mary Gould (CC)
Leslie Gould
Daniel & Sandra Grieser (CC)
Mr. & Mrs. Henry B. Gutman (CC)
Mr. & Mrs. Burton K. Haimes (CC)
Scott & Ellen Hand (CC)
Kenneth V. Handal & Mary F. Golden (CC)
Dr. Adrienne Harris & Robert Sklar (CC)
Molly K. Heines & Thomas J. Moloney (CC)
Buck Henry (CC)
Cheryl Henson
Donald & Adria S. Hillman (CC)
Barbara Hoffman (CC)
Pamela J. Hoiles (CC)
Jane Holzka & Mark Winther (CC)
Madeline & Ian Hooper (CC)
Richard & Dorothy Hulbert (CC)
Paula Jarowski & Earl Black (CC)
John S. Johnson & Susan Short (CC)
Frederick H. Joseph
Gerri Kay (CC)
Younghee Kim-Wait
Alexander Edgecombe Kipka (CC)
Amy Klein & Bruce Bender
Bruce R. Kraus (CC)
Charlotte & I. Stanley Kriegel (CC)
Nancy Lassalle
Amala & Eric Levine
Arthur Levitt
John Levy & Victoria Westhead (CC)
John Lichtenstein (CC)
Grace Lyu-Volckhausen (CC)
R.H. Macy's & Co., Inc.
Michael Maharam
Dr. Stephen J. Marra
Brooklyn Ear, Nose, & Throat (CC)
Massey Knakal
The Curtis W. McGraw Foundation
McVicker & Higginbotham, Inc.
Megu
Mr. & Mrs. Richard L. Menschel (CC)
Catherine & Jean-Marc Moriani
John Morning (CC)
The Non Nobis Solum Foundation, Inc.
O'Grady Family Foundation (CC)
Camila Pastor & Stephen Maharam
Charles I. Petschek (CC)
Antonia Pew (CC)
Cynthia & Leon Polsky (CC)
William & Katharine Rayner (CC)
Douglas P. Reetz (CC)

Joe Regan Jr. (CC)
Research Foundation of CUNY
Juergen Riehm & Jody Oberfelder (CC)
James E. Robison Foundation
Mr. & Mrs. David Rockefeller (CC)
Alvin J. Rockwell 1990 Charitable Trust
Seth L. Rosenberg & Catherine Lebow (CC)
Rudin Management Company Inc.
Martin E. Segal (CC)
Patricia J.S. Simpson (CC)
Ellyne Skove (CC)
Harry & Clare Smith (CC)
Lavinia & Brian Snyder (CC)
Mr. & Mrs. Laurence T. Sorkin (CC)
Melissa & Robert Soros (CC)
Steven & Jeanne Stellman (CC)
Dr. Susan Stewart (CC)
John Studzinski (CC)
Toby & Daniel Talbot (CC)
Juliet Taylor & James Walsh (CC)
Michael M. Thomas (CC)
John & Narcissa Titman (PC)
Treasurers & Ticket Sellers Union Local 751 (CC)
Jay Tremblay & Jannice Koors (CC)
The Alice Tully Foundation
Vanetta Vancak
Julia & Carter Walker
William Warren & Patricia Rohrer
Charlene Magen Weinstein (CC)
Jill Weinstein (CC)
Ms. Barbara Wilks (PC)
Susan R. Witter (CC)
Mary Anne & Richard Yancey (CC)
Michael & Barbara Zimmerman (CC)
\$1,500 OR MORE
Michele L. Abeles
Chris Ahearn & Maria Mayer
Ronald & June Ahrens (PC)
Sidney and Beatrice Albert Foundation
American Chai Trust
Amphion Foundation
James B. D. Anning (PC)
Area, Inc.
Milton & Sally Avery Arts Foundation
Sarah Jean Avery (PC)
Theodore S. Bartwink (PC)
Jayne Baum (PC)
Lisa & Jim Bedell (PC)
Alan & Leslie Beller (PC)
Brooke Benaroya
Tony Bennett & Danny Bennett
Melvin Berkowitz & Elayne Abrams (PC)
Therese Bernbach (PC)
The House of Bernstein
Loren Blackford & Michael Dubno (PC)
Sarah Bleibtreu (PC)
The Bloomingdale's Fund of the Federated Department Stores Foundation
Edith C. Blum Foundation
Sallie Blumenthal (PC)
Sheldon & Jill Bonovitz (PC)
Etta Brandman, Esq. (PC)
Constance Casey & Dr. Harold Varmus (PC)
Ida L. Castro (PC)
Frank Samuel Cicero (PC)
Condé Nast Publications

Michele & Terry Cone (PC)
Carla Craig & Stuart Freedman (PC)
James G. Croghan & Louis R. Hedgecock (PC)
Peter & Katharine Darrow (PC)
Maarten de Jong (PC)
Ms. Joelle S. De Lacroix (PC)
Rohit & Katharine Desai (PC)
The DiPaolo Foundation
Frederick N. & Michele Oka Doner (PC)
Brooke Hayward Duchin & Peter Duchin (PC)
Eric Eddy (PC)
Adrienne B. Effinger (PC)
Jim & Dawn Ellwood (PC)
Gail Erickson & Christa Rice (PC)
David Farer & Elisa King (PC)
Ronald E. Feiner, Esq (PC)
Joan Fields (PC)
Arthur & Susan L. Fleischer (PC)
Michael & Tiiv Frankfurt (PC)
M. Derene Frazier (PC)
Stephanie French (PC)
Richard Friedberg & Elizabeth Searles
Mr. James G. Gamble
Charles Gifford & Michele van Deventer (PC)
Hal Goldberg
Dr. Michael & Dr. Deborah Goldberg (PC)
Joe Gordon & Mark Bauer (PC)
Lisa Gray & Hunter Gray (PC)
Howard Greenberg Gallery (PC)
Stephen R. Greenwald & Rebecca A. Sullivan (PC)
Gunilla N. Haac (PC)
Stephen Haller Gallery (PC)
Yoel & Eva Haller (PC)
Mr. & Mrs. Hugh Hardy (PC)
The Jane Henson Foundation
Arlene Heyman M.D. & Shepard Kantor M.D. (PC)
Joel & Lily Hoffman (PC)
Stephanie Holmquist & Mark Allison (PC)
Frank M. Holozubiec (PC)
Patrick Hughes (PC)
Phyllis S. Hyde & Jan Thomas Hyde (PC)
Isabel Toledo Enterprises, Inc.
Linda & Lawton Johnson (PC)
Michael Johnson (PC)
T. Radey Johnson & Jane Platt (PC)
Randolph & G. Miller Jonakait (PC)
Alex & Ada Katz (PC)
Frances Kazan (PC)
Susan Kille & Thomas W. Sawyer (PC)
Susan & Alan Kolod (PC)
Svetlana Kondratieva (PC)
Reed & Delphine Krakoff (PC)
Robin Kramer (PC)
Kraus Family Foundation (PC)
The Krumholz Foundation
Hugh & Betsy Lamle (PC)
Anna & Jonathan Lehman (PC)
Mr. David Lerner (PC)
Margo Levine & Robert Cantor (PC)
Jeffrey & Karin Lewis (PC)
Lincoln Electric Products Co., Inc. (PC)
Kathleen Lingo
Richard Lynn & Joseph Evall (PC)
Mark & Stephanie Madoff (PC)
Edward Mafoud (PC)

NEXT STAGE CAMPAIGN

Laurie Mallet/Ozone Design, Inc.
Marianna Mather (PC)
Juliet Mattila & Robin Magowan (PC)
Deborah McAlister & Christopher Jones
Jennifer McConnell (PC)
Dr. James & Jane McGroarty (PC)
Gordon N. McLeod & Melanie Grisanti (PC)
Me & Ro
Sharon & Curtis Mechling (PC)
Mr. & Mrs. David Miller (PC)
Judith & Luca Missoni (PC)
Isaac Mizrahi & Co. (PC)
Donald & Gwen Arner Moffat (PC)
Richard J. & Gloria E. Moylan (PC)
Deirdre K. Mullane (PC)
Jennifer Murray (PC)
Uma Muthu & John Vlahoplus (PC)
Jerry A. Nelson (PC)
Jim Nelson (PC)
Stephen Nelson (PC)
Linda Nochlin-Pommer (PC)
North Fork Bank
Joy O'Loughlin & Michael David Haddad (PC)
Noah Osnos (PC)
Mark H. & Carole Robinson Palermo
Karen B. Peetz (PC)
Roberto Pesaro (PC)
Alexandra & Frederick Peters (PC)
Nevada Powe
Dr. Sandra Pierson Prior (PC)
Proof Photographic Agents
Mr. & Mrs. David Puth (PC)
Martin & Anna Rabinowitz
Elizabeth & Kirk Radke (PC)
Esther Redmount & Harry White (PC)
Larry G. Remmers (PC)
Connie & Ted Roosevelt (PC)
Julie Ross & Mark Ladner (PC)
Liliya & Kirk Ross (PC)
Elizabeth Roxas-Dobrich (PC)
W. Bradley Rubenstein (PC)
Thomas Ryan (PC)
Margaret Sarkela (PC)
Nancy Schuh & Joseph Mohbat (PC)
Laura Schwartz & Arthur Jussel (PC)
Oliver Sehgal (PC)
Jessica & Jerry Seinfeld (PC)
Jeanette M. & Ruben Selles (PC)
Rena Shagan (PC)
Victoria L. Sharp (PC)
Harold & Myra Shapiro Family Foundation (PC)
Manya & Howard Shapiro (PC)
Professor Stuart Sherman (PC)
Dana Sherwood (PC)
Anne Sidamon-Eristoff (PC)
Lesley Sigall (PC)
Lawrence & Susan Sills
Denise Simon (PC)
Helen Simonson (PC)
Susan Skerritt (PC)
Stephen R. Smith & Ford Rogers (PC)
Smudge Ink
James Sollins (PC)
Annaliese Soros (PC)
Dr. Rogelio Sosnik & Dr. Irene Cairo (PC)
In Memory of Jan Stackhouse (E)

Barbara H. Stanton (PC)
Axel Stawski (PC)
Oliver M. Stevens (PC)
Julie E. Stocker (PC)
Leila Straus (PC)
Mr. Charles Sullivan (PC)
Patricia Tarr (PC)
Willard B. Taylor (PC)
Beth M. Uffner (PC)
Susan Unterberg (PC)
Tom Vandembout & Brenda Nelson (PC)
Bernardette Vaskas (PC)
Charles Antoine van Campenhout (PC)
Gary Van Dis (PC)
Law Offices of Claudia Wagner
Joan Waricha (PC)
Joan Warren (PC)
Janet C. Waterhouse PhD (PC)
Laurie & David I. Weiner (PC)
Michael S. Weinstein (PC)
David Wertheimer (PC)
Ethan J. Wagner & Thea Westreich
Walter J. Wilkie (PC)
William & Karen Tell Foundation
Carolyn Ellis Wise (PC)
Ross Wisniewski (PC)
Betsy Witten (PC)
Carole Wolf (PC)
W. Wynn & I. Pachter (PC)
Hiromi Yoshida (PC)
The Zeitz Foundation
Michael Zimmer (PC)

\$1,000 OR MORE

Kenneth & Diana Adams
Frank & Mary Ann Arisman
Aronovitz Family Foundation, Inc.
Thomas Ball & Bobbie Tse
Alexandra Ballard
Diana Balmori
Andrea Barbieri
Anne Becker
Carol Bellamy
Sean Benson
Stephanie Bernheim
Elaine Bernstein
Jeffrey B. Bishop
Alex Blackmore
Patricia Blanchet
Andres Blanco
Boosey & Hawkes, Inc.
Sally R. Brody
Andrew Duncan Brown
Laura E. Butzel
Coleen Cahill
Cynthia F. & Jonathan Calder
Jean Jacques Cesbron
Alexandre & Lori Chermia
Carol D. Chinn
Dr. Toby Chuah
Michael Chun & Wendy Sheldon
Charles & Ellen Cogut
Linda Collins
Karen & Hugh Connell
Steven C. Conyers
M. Todd Cooke
Martin Cottingham
Elizabeth Crowell & Robert Wilson
Florence A. Davis
Willis Delacour

Tamara Downey
Fred Eychaner
Joan & Peter Faber
Pauline & Lawrence Feldman
Daniel B. Ferris
Dr. Michael B. First & Leslee Snyder
Friars Foundation
Ann W. Gaffney & Bronson Binger
Dr. Laurie Garrett
Ellen Gesmer & Alan Hyde
Dr. Claude Ghez MD
Mr. & Mrs. John N. Gilbert, Jr.
Francoise Girard & David Knott
Peter Glass
June O. Goldberg
Susan Goldberg
Elizabeth Gouger
Douglas Gray & Leslie Koch
Greenwich Capital Foundation, Inc.
Louise Guthman
The Haupt Foundation, Inc., in memory of Stuart Haupt
Murray Henry & Elizabeth Ochoa
Diana & John Herzog
Judith M. Hoffman
John & Karen N. Horn
Steve Hudson
Scott Irwin
Jonathan V. Jackson
Diane & Steven M. Jacobson
Amy & David M. Jaffe
Andrea Kaliski-Miller
Nicholas Karp
Aaron Katzel & Jacquie Wohrms
Jessie M. Kelly
Joan & Albert Kronick
George Labalme
David Lane
Judith Langer
Robert S. Langley
John & Judith LaRosa
Mary Laub
Helena Lee & Richard Klapper
Lisa Lee
Julius Leiman-Carbia
Toby Devan Lewis
Lucia Woods Lindley & Daniel A. Lindley
Phyllis & Walter Loeb
Carol A. Mandel
Sharon McGinnis & Howard Mandel
William W. McGinty & Bianca Maria Orlando
Hedy & Donald Matteson
Marsha Miro
Dick & Carol Netzer
Rachel & Larry Norton
Marguerite Nougé-Sans
David & Janet Offensend
Hank O'Neal & Shelley Shier
Brian & Bernadette O'Neill
James O'Neill
David S. Orentreich, M.D.
Bruce & Nicole Paisner
Thomas P. & Dominique Palmer
Carl E. Podwoski
Don & Madonna Reed

Giraldi Reyes
Joumana Rizk
The Rockefeller Group
Mr. & Mrs. Daniel Rose
Janice Rosenthal
Steve & Rory Rothman
William Ryall
Mina B. Samuels & David Foster
Alida & Steven H. Scheuer
Jonathan Scheuer & Debra Granik
Leonard Shaykin
Andrea C. Sholler
Sire Partners
Richard & Mimi Somerby
Elizabeth F. Stribling
Lynn Thommen
Wade & Angela Thompson
Calvin Tsao & Zack McKown
The Turnip Top Foundation
Alex Wagman
Susan N. Wagner
Franklin J. Walton
Ted Weinreich
Elaine Weinstein
Tracy A. White
Nina Zilkha

As of September 2007

FISCAL YEAR 2008

\$500,000 OR MORE

Altria Group, Inc.
Bank of America
Brooklyn Borough President's Office—Marty Markowitz
Jeanne Donovan Fisher (E)
Estate of Richard B. Fisher (E)
Judith R. & Alan H. Fishman (E)
The Ford Foundation (E)
The Howard Gilman Foundation (E)
The Kovner Foundation
Robin & Edgar Lampert (E)
Diane & Adam E. Max (E)
The Andrew W. Mellon Foundation (E)
New York City Department of Cultural Affairs
New York State Music Fund
The Estate of William Boss Sandberg (E)
The Peter Jay Sharp Foundation (E)
The SHS Foundation (E)
Ronald P. Stanton
The Starr Foundation (E)

\$100,000 OR MORE

American Express
Bloomberg
Booth Ferris Foundation
CA, Inc.
Carnegie Corporation of New York
Aashish & Dinyar Devitre (E)
Forest City Ratner Companies
The Forest City Ratner Companies Foundation
The Fan Fox & Leslie R. Samuels Foundation, Inc.
Francis Greenburger & Isabelle Autones
Charles J. & Irene F. Hamm
The Harkness Foundation for Dance
The Estate of Rita K. Hillman (E)
Stephanie & Tim Ingrassia (E)
JPMorgan Chase Foundation
Mr. & Mrs. Hamish Maxwell (E)
National Grid
New York Marriott at the Brooklyn Bridge
New York State Council on the Arts

The New York Times Community Affairs Department
R/GA
The Shubert Foundation, Inc.
Skirball Foundation
Joseph S. and Diane H. Steinberg Charitable Trust (E)
Target
Time Warner Inc.
Transammonia Inc.
Visa U.S.A. Inc.
Nora Ann Wallace & Jack Nusbaum (E)
The Norman & Rosita Winston Foundation, Inc. (E)
The Robert W. Wilson Foundation, Inc.

\$50,000 OR MORE

The Achelis Foundation
Altman Foundation
The Bank of New York Mellon Corporation
Calyon Crédit Agricole CIB
William I. Campbell & Christine Wächter-Campbell
Citi Foundation
Citigroup Foundation
Con Edison
The Gladys Krieble Delmas Foundation
Irene Diamond Fund (E)
Charles & Valerie Diker
The Educational Foundation of America
Fleurs Bella
Goldman, Sachs & Co.
The Florence Gould Foundation
Semone Grossman, Andrew Grossman, GGMC Parking, LLC
Agnes Gund & Daniel Shapiro
The Francena T. Harrison Foundation Trust
Geoffrey C. Hughes Foundation
Instituto Cervantes New York
The Jerome Robbins Foundation, Inc.
The Lepercq Foundation
James McLaren & Lawton Fitt (E)
MetLife Foundation
The Ambrose Monell Foundation
Morgan Stanley
Donald R. Mullen Jr.
National Endowment for the Arts
New York State Education Department
Samuel I. Newhouse Foundation, Inc.
Paul Newman & Joanne Woodward News Corporation
Barbro Osher Pro Suecia Foundation
Jim & Mary Ottaway
The Polish Cultural Institute in New York
The Reed Foundation
Jonathan F.P. & Diana V.C. Rose
Martha A. & Robert S. Rubin
May and Samuel Rudin Family Foundation, Inc.
Amy W. Schulman & David E. Nachman
Timothy Sebulnya
Sovereign Bank
Joseph A. Stern
Trollbäck & Company
Union Beer Distributors
Verizon Communications
Vital Projects Fund
Yamaha Artist Services

\$10,000 OR MORE

ABN AMRO, Inc.
The Aeroflex Foundation
AG Foundation
Arcos Communications
Ark Restaurants
Asian Cultural Council
AT&T Foundation
Barefoot Win
The Barker Welfare Foundation
The Bay & Paul Foundations, Inc.
Roger & Brook Berland
Susan V. Berresford
Kevin Bourke
The Brooklyn Brewery
The Buck Family Foundation
The Martin Bucksbaum Family Foundation
Burson-Marsteller
The Louis Calder Foundation
Louis C. Camilleri
Mary Flagler Cary Charitable Trust
Centerview Partners
Mr. & Mrs. Henry Christensen III (E)
City Shuffle
The Aaron Copland Fund for Music, Inc.
Mary Sharp Cronson
Michele Cubic & Raymond

Rose M. Badgeley Residuary Charitable Trust, HSBC Bank USA, Trustee
Diana Barrett & Robert Vila for The Fledgling Fund
Kevin Brine & Jessica Smith (E)
The Brine Family Charitable Trust
Credit Suisse
Crunch
The Dermot Company, Inc.
DLA Piper (E)
Estate of Madison S. Finlay (E)
Barry M. Fox
The Grand Marnier Foundation
Rita E. & Gustave M. Hauser
Barbara Haws & William Josephson (E)
Charles Hayden Foundation
Heckscher Foundation for Children
Alex Hillman Family Foundation
Holtsinger Foundation
HSBC Bank USA, N.A. (E)
The Jordan Company, L.P.
KeySpan Foundation, Inc.
David L. Klein, Jr. Foundation
Dan & Abbe Klores
The Emily Davie & Joseph S. Kornfeld Foundation
Robert Lehman Foundation
Lynford Family Charitable Trust
Ashley Elizabeth Melone
Henry and Lucy Moses Fund, Inc.
National Grid Foundation
NYC Department of Youth and Community Development
New York Community Trust
New York State Office of Parks, Recreation and Historic Preservation
O.S.S. Capital Management
Sagatiba
The Scherman Foundation, Inc.
Ken Starr & Diane Passage
The Harold & Mimi Steinberg Charitable Trust
Consulate General of Sweden in New York
Trust for Mutual Understanding
The Isak & Rose Weinman Foundation, Inc. (E)
Vaughn C. Williams
Lisa & Richard Witten

NEXT STAGE CAMPAIGN

Velazquez
The Cultural Heritage Preservation Fund
Cumming The Fragrance Deity
Max & Victoria Dreyfus Foundation, Inc.
Brendan & Barbara Dugan (E)
Henry & Kathy Elsesser
Epstein Philanthropies
Etant donnés
Mallory & Elizabeth Factor
Martin & Linda Fell
Stephen G. Felsler
Film Movement
Fribourg Family Foundation
Ann and Gordon Getty Foundation
Goethe-Institut New York
John M. Goldsmith
Great Performances
The Green Fund Inc.
William & Mary Greve Foundation
Regina M. Griffin
The Grodzins Fund
The Marc Haas Foundation, Inc.
Penn & Diane Holsenbeck
Hunton & Williams LLP
The Hyde & Watson Foundation
Alan Jones & Ashley Garrett
Miriam Katowitz & Arthur Radin
Robin & Edgar Lampert
Raymond Leary & Melva Bucksbaum
Leo Burnett Company, Inc.
Abby & Mitch Leigh
The Leon Levy Foundation
Phyllis & Harvey Lichtenstein
Frederick Loewe Foundation
M&T Bank
Madiba Restaurant
Manatt, Phelps & Phillips, LLP
The Mayor's Office of Film, Theatre, and Broadcasting
mcgarrybowen
Mead Westvaco Corporation
Leigh & Charles Merinoff
Bella Meyer & Martin Kace
Timothy & Virginia Millhiser
Edward L. & Robin Milstein
Edward S. Moore Foundation
Andrew J. Nassbaum
New England Foundation for the Arts
The New York Times Company
Foundation, Inc.
Nolen-Bradley Family Fund
NYSE Foundation
William J. & Dorothy K. O'Neill
Foundation
The Onion
Peter Parcher
Diane Passage & Ken Starr
Peck Stacpoole Foundation
The Laura Pels Foundation
Pfizer Inc.
The Picower Foundation
Praxis Foundation
Providence Day Spa
Rajika & Anupam Puri
Red Diamond Wines
Billy Rose Foundation, Inc.
Helena Rubinstein Foundation
Rush Philanthropic Arts Foundation
The Morris & Alma Schapiro Fund
Sharp Electronics Corporation
The Evelyn Sharp Foundation
Alfred P. Sloan Foundation

Mr. & Mrs. Howard Solomon
Linda & Edward Spilka, The Spilka Family Foundation Inc.
Starry Night Fund of the Northern Trust Charitable Giving Program
Jean Stein, JKW Foundation
Sutherland Asbill & Brennan LLP
Taipei Cultural Center of TECO in NY
William and Karen Tell Foundation
The Tides Foundation (E)
James S. & Merry H. Tisch
Michael Tuch Foundation, Inc.
Two Trees Management Co. LLC
Wendy vanden Heuvel, JKW Foundation
The Viola Fund
Wachtell, Lipton, Rosen & Katz
Lila Wallace-Reader's Digest Fund
Warner Music Group
The Richard & Gertrude Weininger Foundation
Francis Williams
Winston & Strawn LLP
Mr. & Mrs. James D. Wolfensohn
Estate of Martha Zalles
Andrew Zolli & Jennifer Carlson
Z+, Inc.

\$5,000 OR MORE

Academy Foundation of the Academy of Motion Picture Arts and Sciences
The American-Scandinavian Foundation
Matthew & Krista Annenberg
Arnold & Porter LLP
Axe-Houghton Foundation
Susan Baker & Michael Lynch
Banco Santander S.A.
Mr. & Mrs. Sid R. Bass
Tony Bechara
In Memory of Malaika Holman
Bermiss (E)
Leon & Debra Black
The Bloomingdale's Fund of the Macy's Foundation
Neil & Kathleen Chrisman
The Clarett Group
Marjorie T. & William R. Coleman
Colgate-Palmolive Company
Mark Lane & Lisa Craig
The Criterion Collection
Englander Foundation Inc.
Fred Eychaner
Steven & Susan Felsler
Joseph G. Finnerty
Forbes Inc.
The Cultural Services of the French Embassy in the U. S.
GFI Development Company, LLC
Nomi Ghez Foundation
Gibson, Dunn & Crutcher, LLP
David & Susie Gilbert
Barbara L. Goldsmith
Lela Goren & Shoshanah Brown
Paul S. Gottlieb & Sara Adler Gottlieb
Mary Livingston Griggs & Mary Griggs
Burke Foundation
Cheryl Henson
The DuBose and Dorothy Heyward Memorial Fund
The Robert H. N. Ho Family Foundation
Steven S. Hurwitz
IATSE - Theatrical Stage Employees
Local 4
Instituto Camões
Fred Iseman

Israel Ministry of Tourism
John Wiley & Sons
Mary Kantor
James E. & Marcia J. Kelly
Alexander E. Kipka
Korman Marketing Group
Kraft Foods
Anna Kuzmik-Sampas
Lehman Brothers
The Liman Foundation
Liz Claiborne Inc.
Lo Mid Range & Cattle Corp
Grace Lyu-Voickhausen Maharam
Robin Maxwell
Scott C. McDonald
Rachel McPherson & W. Patrick McMullan
Medgar Evers College Gifts & Grants
Merrill Lynch & Co. Foundation, Inc.
Selma & Martin Mertz
Rupert Murdoch
Alex G. Nason
Newmark & Company Real Estate
Joey O'Loughlin & Michael David Haddad
William & Laura Taft Paulsen
Loretta & Bill Perlmut
Richard Peterson & Ellen Flamm
Diana Elzey Pinover & Eugene Pinover
Embassy of Portugal in the United States of America
Price Waterhouse & Co.
Mr. & Mrs. Theodore C. Rogers
Romanian Cultural Institute in New York
SRBI L.P.
Estate of William P. Sandberg
Steve Sachs & Michelle Lynn-Sachs
Schneeman Studio, Limited
The Schoenheimer Foundation
Charles and Mildred Schnurmacher Foundation
Mr. & Mrs. Richard J. Schwartz
Florence Seligman
D.E. Shaw & Co., L.P.
Shook, Hardy & Bacon
Elizabeth Sidamon-Eristoff
George Soros
Ellen & Samuel Sporn
Set Editions
Seth Sprague Educational and Charitable Foundation
Kenny & Nikki Steingold
Stop & Stor Charitable Fund
Michael M. Thomas
Hon. Roger Tilles
Jane Timken
TAP Portugal Airlines
Peter C. Trent
Jakob & Lisa Trollbäck
TTSL Charitable Foundation/Ted Tai-Sen Lin & Sharon Chang
Diane & Tom Tuft
The Alice Tully Foundation
UBS Wealth Management
Judith Vale
Verizon Communications
Margo & Anthony Viscusi
VisitBritain
The Walt Disney Company
Judge Franklin R. Weissberg & Judge Marilyn G. Diamond (E)
west elm
Nina Winthrop
Adam R. Wolfensohn & Jennifer Small

Claire & Curtis Wood
Carol Yorke & Gerard Conn
James & Pia Zankel

\$2,500 OR MORE

Sidney & Beatrice Albert Foundation
Alvin J. Rockwell 1990 Charitable Trust
Amphion Foundation
Rina & Takis Anoussi
The Appleman Foundation Inc.
Allan Arffa & Kay Matschullat
Frank B. & Mary Ann Arisman
Jody & John Arnold
Janet Aspen
Daniel Baldini
Benjamin & Leah Barber
Nancy Barber
The Howard Bayne Fund
George E. Berger & Associates LLC
The Bill Bernbach Foundation
Therese Bernbach
Raphael & Jane Bernstein/Parnassus Foundation
The Mary Duke Biddle Foundation
Mr. & Mrs. Anthony Bowe
DJ R. Bruckner
Cake Man Raven Confectionary
William I. Campbell & Christine Wächter-Campbell
Cantaloupe Music
Capezio/Ballet Makers Dance Foundation
Charina Foundation, Inc.
Joan Hardy Clark
Condé Nast Publications
Ranny Cooper & David Smith
The Cowles Charitable Trust
Creative Capital Foundation
Catherine G. Curran
Elizabeth de Cuevas
Research Foundation of CUNY
DeLaCour Family Foundation
Beth Rudin DeWoody
Diana Diamond & John Alschuler
The Double-R Foundation
Lonti Ebers
Dwight & Ann Ellis
Israel & Caryl S. Englander
Therese M. Esperdy
Seth & Sara Faison
Fiona & Harvey Fein
Joan Fields
Consulate General of Finland
Susan L. Foote & Stephen L. Feinberg
Gordon & Mary Gould
Daniel & Sandra Grieser
Mr. & Mrs. Burton K. Haimes
Anne & John Hall
Scott & Ellen Hand
Adrienne Harris & Robert Sklar
Molly K. Heines & Thomas J. Moloney
Buck Henry
Arlene Heyman
Donald & Adria S. Hillman
Pamela J. Hoiles
Stephanie Holmquist & Mark Allison
Jane Holzka & Mark Winther
Richard & Dorothy Hulbert
Phyllis S. Hyde & Jan Thomas Hyde
Italian Cultural Institute of New York
Japan Foundation
Paula Jarowski & Earl Black
David Johnson
John S. Johnson & Susan Short
Gerri Kay
Frances Kazan
Philip Kearns & Sid Ray
Christoph M. Kimmich
Younghee Kim-Wait

Bruce R. Kraus
Charlotte & Stanley Kriegel
Nancy Lassalle
Brian T. Leary
Anna & Jonathan Lehman
Lucia Woods Lindley & Daniel A. Lindley
Macy's East
Marks Paneth & Shron LLP
Dr. Stephen J. Marra Brooklyn Ear, Nose, & Throat
The Appleman Foundation, Inc.
Me & Ro
The Mendik Company
Mr. & Mrs. Richard L. Menschel
Richard & Barbara Moore
Sean Moore
John Morning
Charles Stewart Mott Foundation
Linda Nochlin-Pommer
The O'Grady Foundation
Katherine Olson
One World Fund
Everett H. Orfner
Antonia Pew
Cynthia & Leon Polsky
Putumayo World Music
David L. Ramsay, MD
William & Katharine Rayner
Don & Madonna Reed
Douglas P. Retz & Julie Sorrentino
Joe Regan Jr.
Larry G. Remmers
Juergen Riehm & Jody Oberfelder
James E. Robison Foundation
Mr. & Mrs. David Rockefeller
Daniel & Joanna S. Rose
Seth Rosenberg & Catherine Lebow
Nancy Schuh & Joseph Mohbat
Elif & Tamer Seckin
Martin E. Segal
Patricia J. S. Simpson
Elynn Skove
Harry J. & Clare Smith
Stephen R. Smith & Ford Rogers
The Ted Snowdon Foundation
Lavinia & Brian Snyder
James Sollins
Mr. & Mrs. Laurence T. Sorokin
Melissa & Robert Soros
Consulate General of Spain
Steven & Jeanne Stellman
Robin C. Stevens
Susan Stewart
Daniel & Toby Talbot
Juliet Taylor & James Walsh
Jay Tremblay & Jannice Koors
Time
Susan Unterberg
The Usual Suspects, LLC
Julia & Carter Walker
Leigh Walters
Christopher Wangro
William Warren & Patricia Rohrer (E)
Jill Weinstein
Susan R. Witter
Mary Anne & Richard C. Yancey
The Zeit Foundation
Michael & Barbara Zimmerman
Matthew & Myra Zuckerbraun (E)

\$1,500 OR MORE
Diane Abeloff & Sanford Nager
Robert & Mary Aberlin
Albert & Bessie Warner Fund
Adagio Teas
Kenneth & Diana Adams
Ronald & June Ahrens
Enid Ain & Richard Rizzo
Donald Allison & Sumiko Ito
American Chai Trust

James B. D. Anning
Mr. & Mrs. Anthony Antonucci
Milton & Sally Avery Arts Foundation
The Bank of New York
Hugo Barreca
Jayne H. Baum
Lisa & Jim Bedell
Melvin Berkowitz & Elayne Abrams
Y. Sekou Bermiss (E)
Denise Bernardo & Eddie Muentes
Elaine Bernstein
The House of Bernstein, Inc.
Jeffrey B. Bishop & Jill Baker
Andy Birsh
Patricia Blanchet
Edith C. Blum Foundation
Sheldon & Jill Bonovitz
Frank Borsa & Jeffrey Wallace
Charles & Caroline Boyar
Carin Boyer
Mr. & Mrs. Richard S. Braddock
Louise Braverman & Steven Glickel
Brightwater Spring Water
Keith Brodie
Loren Brown (E)
Norman & Terri Buchan
Susan & David Burris
Cynthia F. & Jonathan Calder
Mr. & Mrs. Robert Cantor
Ida L. Castro
Lawrence & Natasha Cayenne-McCall
Centerview Partners
Toby Chuah & Robert Feinson
Constance M. Cincotta
Frederick & Jan Cohen
Columbus Coleman, Jr., Esq.
James H. Collins
Michele & Terry Cone
Carla Craig & Stuart Freedman
James G. Croghan & Louis R. Hedgecock
Constans Culver Foundation
Peter & Katharine Darrow
Clive Davis
Solomon & Blanche De Jonge Foundation
Gonzalo de las Heras
Jennie & Richard De Scherer
Michael & Jayne Del Giudice
Rohit & Katharine Desai
Tobey Diller
The DiPaolo Foundation
Direct Invest LLC
Frederick N. & Michele Oka Doner
John Dougherty (E)
Adrienne B. Effinger
Egg Press
Jim & Dawn Ellwood
Israel & Caryl S. Englander
Cristina Enriquez-Bocobo
Gail Erickson & Christa Rice
Barbara Fairchild & Paul Nagle
David Farer & Elisa King
Beth & Michael Fascitelli
Ronald E. Feiner Esq.
Edith Ferber
Joan Fields
Madelon Finkel & Arnold Lefkowitz
Arthur & Susan Fleischer
Marty & Jean Frankel
Linda Frankenbach & Rik Kranenburg
Louis C. Franzetti
M. Derene Frazier
Stephanie French
Barry Friedberg & Charlotte Moss
Richard Friedberg & Elizabeth Searles
Mr. & Mrs. Meyer S. Frucher

NEXT STAGE CAMPAIGN

Susan & Michael Furman
 Leslie Gaines-Ross
 Paul A. Gangsei & Susan Herman
 Laurie Garrett
 GBS Foundation
 Geduld / Cougar Foundation, Inc.
 Lynda & Marvin Geller
 Peter L. Geller
 Georgian Wine House
 Francoise Girard & David G. Knott
 Richard Glasebrook
 Jane Glucksman
 Susan Goldberg
 Jennifer P. Goodale & Mark Russell
 Joe Gordon & Mark Bauer
 Lisa Gray & Hunter Gray
 Jane & Jean-Marie Grenier
 Cynthia Griffin & Stephen Haller
 Group S.J.R.
 Mr. & Mrs. Henry B. Gutman
 Gunilla N. Haac
 Stephen Haller Gallery
 Hall's Magazine Reports
 Mr. & Mrs. Hugh Hardy
 Charlotte Herzele
 John & Diana Herzog
 The William Talbot Hillman
 Foundation
 Barbara Hoffman
 Joel & Lily Hoffman
 Frank Holozubiec
 H. Michael Howell (E)
 Steve Hudson & Victoria Burke
 Patrick Hughes
 IBM
 Ipsos MMI, Inc.
 Scott Irwin
 The Jane Henson Foundation
 Linda & Lawton Johnson
 T. Radey Johnson & Jane Platt
 Andrea Kaliski-Miller & George Miller
 Randolph & G. Miller Jonakait
 Alexander Jutkowitz
 Natalia Kanem
 Alex & Ada Katz
 John L. Kelly
 Susan Kille & Thomas W. Sawyer
 Helen Kim-Borders
 Micheline Klagsbrun & Ken
 Grossinger
 Little Johnny Koerber
 Susan & Alan Kolod
 Svetlana Kondratieva
 Jayme Koszyn & Thomas O'Handley
 Hugh & Betsy Lamle
 Robin & Edgar Lampert
 John & Judith H. LaRosa
 Lazard Freres & Company
 Anne R. Lee
 Helena Lee & Richard Klapper
 Heidi Levine (E)
 Mr. & Mrs. Dennis Lopez
 Louise Braveman Architect
 Legg Mason
 David Lerner
 John Levy & Victoria Westhead
 Anjali Lewis
 Jeffrey & Karin Miller-Lewis
 Kandace Lombart
 Edward & Ilene Lowenthal
 Aari Ludvigsen & Barbara
 Gaines
 John Lipsky & Zsuzsanna S. Karasz
 Matthew & Andrew Lustig
 Richard Lynn & Joseph Evall

Deborah Lyons
 Edward Mafoud
 Christina Malle
 Laurie Mallet/Ozone Design, Inc.
 Mario Marron
 Marianna Mather
 Juliet Mattila & Robin Magowan
 Deborah McAllister & Christopher Jones
 Jennifer W. McConnell
 Kathryn A. McDonald
 The Curtis W. McGraw Foundation
 James & Jane McGroarty
 Sandra McLean & Robert Stratton
 Gordon N. McLeod & Melanie Grisanti
 Constance & H. Roemer McPhee
 McPheters & Company
 Sharon & Curtis Mechling
 Melville Strauss Charitable Trust
 Mr. & Mrs. David Miller
 Isaac Mizrahi & Co.
 Donald Moffat & Gwen Arner Moffat
 Steve Molitz
 Cecile & Jules Monteyne
 Monroe Mendelsohn Research
 Richard J. & Gloria E. Moylan
 Steve Mushkin
 National Foundation for
 Jewish Culture
 Jerry A. Nelson
 Jim Nelson
 Stephen Nelson
 Matthew Nemeth & Tricia Kissinger
 Carol Netzer
 Michael Newhouse
 The Nielsen Company
 Michael & Elizabeth O'Brien
 Sally & Thomas G. Ord
 Ilana Pachter & William Wynn
 Jean Pagliuso & Tom Cohen
 Sandra Parker & Wendy Parker Ford
 Monique Parsons
 Peco Foundation
 Nancy Pedot
 Donald Pels & Wendy Keys
 Jonathan Penn
 Penn, Schoen & Berland
 Associates, Inc.
 Alexandra & Frederick Peters
 Carl E. Podwoski & Virginia Lovejoy
 Erin Pond
 John M. Powers
 Deborah & Richard Previdi
 Sandra Pierson Prior
 Elise & Jerome Pustilnik
 Mr. & Mrs. David Puth
 Lisa M. Quiroz
 Martin & Anna Rabinowitz
 Elizabeth & Kirk Radke
 Brett Redfearn
 Frances Resheske
 Joumana Rizk
 Matthew Rogers
 Connie & Ted Roosevelt
 Elizabeth Roxas-Dobrish
 W. Bradley Rubenstein
 Margaret Ruff
 Thomas A. Russo & Georgina T.
 Russo
 Thomas Ryan
 Bette & Richard Saltzman
 Kirsten Sandberg
 Banco Santander S.A.
 Catherine Saraniti
 Margaret Sarkela

Anthony Schlesinger & Anne
 Forward
 Christopher J. Scholz & Ines Elskop
 Laura Schwartz & Arthur Jussel
 Matthew Schwonke
 Dr. & Mrs. Thomas Sculco
 Oliver Sehgal
 Steve Seidmon & Lorne Feldman
 Laura Sejen
 Mark Seliger
 Rena & Michael D. Shagan
 Daniel Shefter
 Ted & Mary Jo Shen
 Stuart Sherman
 Dana Sherwood
 Bob Shullman
 Anne P. Sidamon-Eristoff
 John & Helen Simonson
 Sol W. & Hermina Cantor Foundation
 Annaliese Soros
 Jennifer & Jonathan Allan Soros
 Rogelio Sosnik & I. Cairo
 Barbara H. Stanton
 Axel Stawski
 Lauren & Sabrina Steel
 Oliver M. Stevens
 Julie E. Stocker
 Leila Straus
 Elizabeth F. Stribling
 Elizabeth Strickler & Mark T. Gallogly
 Steven B. Tanger
 Mr. & Mrs. Willard B. Taylor
 Karen N. Tell
 John & Narcissa Titman
 Coralie S. Toevs
 Sean Toole
 Beth M. Uffner
 Vanetta Vancak
 Bernardette Vaskas
 Suzanne Vega
 Law Offices of Claudia Wagner
 Joan Waricha
 Jessica Warren
 Lisa C. Wassong
 Janet C. Waterhouse
 Laurie & David I. Weiner
 Charlene Magen Weinstein
 David F. Wertheimer
 Walter J. Wilkie
 Barbara Wilks
 Carolyn Ellis Wise & H.L. Wise
 Betsy Witten
 Carole A. Wolf
 Barbara & David Zalaznick
 Michael Zimmer
 Pavel Zoubok & Paul A. Baglio Jr.

\$1,000 OR MORE
 Stefan & Jan Abrams
 Mark Almeida & Theresa Galvin
 Sarah Jean Avery
 Sean Baldwin
 Andrea Barbieri
 Martin Baumrind
 The Bay and Paul Foundations, Inc.
 Barbara Becker
 Patricia A. Bell
 Carol Bellamy
 Alan & Leslie Beller
 Sean Benson
 Alan Berenbaum & Eileen Lach
 Stephanie Bernheim
 John W. Bernstein & Diana Davenport
 John H. & Penelope Biggs
 Jeffrey Blair and Marc Scorca

Blue Marble Ice Cream
 James P. Bodovitz
 James H. Born
 Lorna Bowen
 Jessica & Donald Brennan
 Sally R. Brody & Mel Herzberg
 Andrew Duncan Brown
 Sarah Burnes
 Elizabeth Butson
 Laura E. Butzel & David Berg
 Linda & Peter Bynoe (E)
 Coleen Cahill
 Jean-Jacques Cesbron
 Tzili Charney
 Joyce E. Chelberg
 Alexandre H. & Lori Chelma
 Adam & Linda Chinn
 Carol D. & Geoffrey M. Chinn
 Charles & Ellen Cogut
 Steven C. Conyers
 M. Todd Cooke
 The Corcoran Group
 Martin Cottingham
 Connie Cranos (E)
 Elizabeth Crowell & Robert Wilson
 Florence A. Davis
 Cory & Bob Donnalley
 Tamara & Jerome Downey
 Lisabeth During and Ross Poole
 Yoni Epelbaum
 Joan & Peter Faber
 Andrea K. Fallek
 Pauline & Lawrence Feldman
 Michael B. First & Leslee Snyder
 Charles H. Fish (E)
 Ann K. Ford & Nicholas P. Frabotta (E)
 Forum Strategies &
 Communications LLC
 Friars Foundation
 Bart Friedman
 Wayne Froud
 Ann W. Gaffney & Bronson Binger
 Samuel Gandy
 Ellen Gesmer & Alan Hyde
 Claude Ghez
 John N. & Gillett Gilbert
 James Gill
 Michael Gilseman
 Peter Glass
 Michael and Deborah Goldberg
 Kenneth V. Handal & Mary F. Golden
 Rhonna Goodman
 Elizabeth Gouger
 Douglas Gray & Leslie Koch
 Sheila Grether
 Warren L. Habib & Alexis Walk
 Patrick Hahn
 Nadia Hamdi
 Hauni Richmond, Inc.
 The Haupt Foundation, Inc.,
 in memory of Stuart Haupt
 Steven Hayes
 Cheryl Heller
 Judith M. Hoffman
 Betty Lou Hudson
 IBM International Foundation
 Leah Ife
 Izze Sparkling Jus
 James W. Jackson
 Joseph Jacobs
 Steven Miles Jacobson & Susan
 Putterman
 Amy & David M. Jaffe
 Jonathan Kass & Merrill Lynch
 Howard S. & Mary Bryde Kelberg
 Robert Kelly
 Timothy Kennon
 Steven Kossak
 Joan & Albert Kronick

The Krumholz Foundation
 Louis Kunsch
 George Labalme
 Robert Langan
 Judith Langer & Arthur Applebee
 Robert S. Langley
 Helena Lee & Richard Klapper
 James Leggio
 Pablo & Almudena Legorreta
 Julius Leiman-Carbia
 Emily Lemer
 Arnold Lepelstat
 Jeffrey Levy-Hinte
 Marcia Levy
 Toby Devan Lewis
 Kathleen Lingo
 Phyllis & Walter F. Loeb
 Ann M. & Mitchell A. Lowenthal
 Anne Mackinnon
 Florence & Brian Mahony
 Carol A. Mandel
 Marble Fund, Inc.
 The Grace R. and Alan D. Marcus
 Foundation
 James Mate
 Hedy & Donald Matteson
 Joseph P. McDonagh
 William W. McGinty
 Julie Meister
 Roger & Robin H. Meltzer (E)
 Lee & Suzanne Miller (E)
 Marsha Miro
 Francine Monaco
 Michael & Ginger Montel
 Maria Montoya
 Norma & Randy Moore
 Martin Morgan
 Mr. & Mrs. Bart Mosley
 Philip Murphy
 Jane & Dwight K. Nishimura
 Carol Netzer
 Jeremy Nussbaum & Charline Spekter
 David & Janet Offensend
 Nicole Paisner
 Mark H. Palermo
 Susan Palm
 Thomas & Dominique Alfrede
 Palmer
 Friederike & Mitchell Penberg
 Joseph Piacentile
 Edward & Annie Pressman
 Elise J. Pustilnik
 Howard Pyle & Kirsten Johnson
 Peter & Susan G. Restler
 The Rockefeller Group
 Richmond Hills High School
 The Alvin J. Rockwell Charitable
 Trust
 John S. Rockwell
 Charles & Lauren Rosen
 Steve & Rory Rothman
 Marvin Ross-Greifinger
 Melissa Bowen Rubin & Joshua
 Rubin
 Mina B. Samuels & David Foster
 Michael Schober
 Joyce Pomeroy Schwartz
 Harold & Myra Shapiro Family
 Foundation
 Leonard Shaykin
 Lori Shepard
 Kristen Siebecker
 Lawrence & Susan Sills
 Barbara Simmons
 Sire Partners
 Mitchell C. & Sandy Sockett
 Richard & Mimi Somerby
 Susan Sonnenblick
 Andre Spears & Anne Rosen
 Wendy & Tom Stephenson

Peter Tavalato
 Adele Tauber
 The Turnip Top Foundation
 Marcelle Thiebaut
 George J. Thomas
 Lynn Thommen
 Catherine V. Thompson
 Wade Thompson
 Irena Tocino
 Treasurers & Ticket Sellers Union
 Local 751
 Calvin Tsao & Zack McKown
 David Wagner
 Susan N. Wagner
 Franklin J. Walton
 Joan Weberman
 Shirli F. Weiss (E)
 Micki Wesson
 Nancy Workman
 Dirk Edward Ziff
 Nina & Michael Zilkha

As of September 2008

BAM STATEMENTS OF FINANCIAL POSITION
As of June 30, 2008 & 2007

ASSETS	2008	2007
Current ASSETS:		
Cash and cash equivalents	\$8,165,250	\$2,550,491
Marketable securities, at market	-	209,161
Due from The City of New York	1,634,914	1,073,057
Accounts and other receivables	344,467	258,549
Due from BAM Endowment Trust	957,836	24,850
Pledges receivable	11,436,114	6,596,634
Prepaid expenses and other current assets	626,077	750,987
TOTAL CURRENT ASSETS	\$23,164,658	\$11,463,729
NON-CURRENT ASSETS:		
Pledges receivable - net	16,831,262	8,155,592
Property and equipment - net	4,841,932	2,854,221
Investment in real estate	-	197,800
Beneficial interest in BAM Endowment Trust	77,549,492	71,054,464
TOTAL ASSETS	\$122,387,344	\$93,725,806
LIABILITIES AND NET ASSETS		
LIABILITIES:		
Accounts payable and accrued expenses	\$2,503,158	\$2,658,367
Deferred revenue	320,391	1,090,760
TOTAL LIABILITIES	\$2,823,549	\$3,749,127
COMMITMENTS AND CONTINGENCIES		
NET ASSETS		
Unrestricted:		
General operations	33,448	(252,419)
Invested in property and equipment	4,841,932	2,854,221
Total unrestricted	4,875,380	2,601,802
Temporarily restricted	43,379,704	26,010,423
Permanently restricted	71,308,711	61,364,454
TOTAL NET ASSETS	\$119,563,795	\$89,976,679
TOTAL LIABILITIES AND NET ASSETS	\$122,387,344	\$93,725,806

BAM's financial statements are audited by Marks Paneth & Shron LLP. The summarized Statements of Financial Position as of June 30, 2008 and 2007, and Statements of Activities for the years ended June 30, 2008 and 2007 were derived from BAM's financial statements. The complete audited financial statements are available at www.guidestar.org, or by writing to the NYS Charities Bureau at 120 Broadway, New York, NY 10005.

BAM STATEMENTS OF FINANCIAL POSITION

For the Years Ended June 30, 2008 & 2007

	2008 Unrestricted	Temporarily Restricted	Permanently Restricted	2008 Total	2007 Unrestricted	Temporarily Restricted	Permanently Restricted	2007 Total
REVENUE:								
Support:								
Special events revenue	\$1,774,319	\$341,798	\$ -	\$2,116,117	\$1,348,307	\$733,428	\$ -	\$2,081,735
Less direct special event expenses	(906,487)	-	-	-	(827,765)	-	-	(827,765)
Special events, net	867,832	341,798	-	2,116,117	520,542	733,428	-	1,253,970
Appropriations from The City of New York	4,414,110	15,000	-	4,429,110	4,365,362	-	-	4,365,362
New York State	82,130	113,248	-	195,378	376,549	884,434	-	1,260,983
Federal government	5,660	45,000	-	50,660	333,995	50,000	-	383,995
Private sector	10,321,496	27,150,012	-	37,471,508	8,525,959	9,698,546	-	18,224,505
Distribution from BAM Endowment Trust	2,200,808	-	-	2,200,808	1,940,896	-	-	1,940,846
Net assets released from restrictions	5,093,470	(5,093,470)	-	-	5,997,386	(5,997,386)	-	-
Total Support	\$22,985,506	\$22,571,588	-	\$46,463,581	\$22,060,689	5,369,022	-	\$27,429,711
Earned Revenue:								
Performance and co-presenter income	\$10,126,890	-	-	\$10,126,890	\$5,855,753	-	-	\$5,855,753
BAM Rose Cinema	2,348,673	-	-	2,328,673	2,284,227	-	-	2,284,227
Rentals, BAMart sales, interest and other income	3,303,447	-	57,719	3,361,166	2,188,592	-	60,691	2,249,283
Total Earned Revenue	\$15,779,010	-	\$57,719	\$15,836,729	\$10,328,572	-	\$60,691	\$10,389,263
TOTAL REVENUE	\$38,764,516	\$22,571,588	\$57,719	\$62,300,310	\$32,389,261	\$5,369,022	\$60,691	\$37,818,974
EXPENSE:								
Program services	\$31,409,592	-	-	\$31,409,592	\$25,996,065	-	-	\$25,996,065
Management and general	2,266,585	-	-	2,266,585	2,292,647	-	-	2,292,847
Fundraising	4,266,251	-	-	4,266,251	3,493,389	-	-	3,493,389
TOTAL EXPENSE	\$37,942,428	-	-	\$37,942,428	\$31,782,301	-	-	\$31,782,301
RESULTS FROM OPERATIONS BEFORE DEPRECIATION								
	\$822,088	\$22,571,588	\$57,719	\$24,357,882	\$606,960	\$5,369,022	\$60,691	\$6,036,673
Depreciation and amortization expense	(359,309)	-	-	(359,309)	(332,059)	-	-	(332,059)
Net assets released from restriction for BAM Annex	1,810,799	(1,810,799)	-	-	-	-	-	-
Increase in beneficial interest in BAM Endowment Trust	-	(3,391,508)	9,886,538	6,495,030	-	6,905,531	6,805,194	13,710,725
CHANGE IN NET ASSETS	2,273,578	17,369,281	9,944,257	29,587,116	274,901	12,274,553	6,865,885	19,415,339
Net Assets, Beginning of Year As Previously Stated	2,601,802	26,010,423	61,364,454	89,976,679	2,326,901	13,735,870	54,498,569	70,561,340
Prior Period Adjustment	-	-	-	-	-	-	-	-
Net Assets, Beginning of Year - Restated	\$2,601,802	\$26,010,423	\$61,364,454	\$89,976,679	\$2,326,901	\$13,735,870	\$54,498,569	\$70,561,340
NET ASSETS - END OF YEAR	\$4,875,380	\$43,379,704	\$71,308,711	\$119,563,795	\$2,601,802	\$26,010,423	\$61,364,454	\$89,976,679



To the BAM family:

I was elected chair of the BAM Endowment Trust (BET) Board of Trustees in 2007 and succeeded the devoted Irwin Lainoff, who joined the BET Board in 2002, and served as its chair from 2005 until he passed away in 2007.

Irwin was a smart, no-nonsense, and inspired chair for the BET Board. His expansive understanding of investment strategy, his love for Brooklyn and his great warmth of spirit were tremendous assets to our BAM family. His guidance was productive and appreciated, and he is missed by all of us.

I wish to express my deepest thanks to my fellow trustees on the BET Board—Susan L. Baker, Henry Christensen III, Dinyar S. Devitre, Doug Gouglass, Alan H. Fishman, Elizabeth Holtzman, James I. McLaren, BET Board Vice Chair Norman Peck, R. Edward Spilka, and Nora Ann Wallace. Their support and their input on investment issues are greatly valued.

Our primary goals for the endowment are to continue growth through investment returns, to preserve capital through prudent investment allocations, and to significantly raise the endowment corpus through new gifts.

Over the two-year period from July 1, 2006 to June 30, 2008, the endowment earned 12.5%; the endowment's total net assets including pledges were \$77,549,492 as of June 30, 2008.

As a result of investment earnings, the BAM Endowment Trust was able to make income distributions to BAM—\$1,940,896 in FY2007 and \$2,200,808 in FY2008—to benefit BAM programming and operations. The distribution covered 5.9% and 5.6% respectively of the operating budgets, which helped significantly, particularly in these challenging economic times, but we hope to be of even greater assistance in the future.

Further strengthening our endowment is critical to the success and future of BAM. Great institutions are built on the stability provided by large endowments, so the BAM endowment has become a cornerstone of the institution's strategic vision. It provides the financial security critical for long-term planning in the face of volatile markets and fluctuating funder commitments.

With help from many leaders in our BAM family, BAM has been working on a new campaign for expansion of the endowment to the \$110 million level, which will ensure BAM's financial stability and secure BAM's programming for the 21st century and beyond.

I hope you will join me in supporting the BAM endowment and achieving our ambitious goals for the future of BAM.

Sincerely,

A handwritten signature in cursive script that reads "Timothy Ingrassia".

Timothy Ingrassia
CHAIR, BAM ENDOWMENT TRUST

ABOUT THE BAM ENDOWMENT TRUST

The mission of the BAM Endowment Trust (BET) is to maintain, manage, and augment the endowment for Brooklyn Academy of Music (BAM) for the purpose of supporting the programs, operations, and facilities of BAM in the long term.

Great institutions are built on great endowments, and at BAM, a growing endowment is the foundation for expansive programming that continues to set new standards for artistic daring and excellence. The endowment provides the financial underpinning to launch new artistic initiatives, plan for future years, seize opportunities for institutional advancement, and confront unanticipated challenges. BAM sincerely thanks those listed below and all contributors who have made gifts to the BAM Endowment Trust.

\$5,000,000 AND ABOVE

Richard B. Fisher & Jeanne Donovan Fisher
The Howard Gilman Foundation
The Peter Jay Sharp Foundation
Lila Wallace-Reader's Digest
Endowment Fund for Community,
Educational, & Public Affairs
Programs

\$1,000,000 AND ABOVE

Altria Group, Inc. / Next Wave Forward Fund
Doris Duke Charitable Foundation
Emily H. Fisher
Judith R. & Alan H. Fishman
The Ford Foundation Fund to
Support Collaborative Creativity
Among U.S. Artists
Independence Community Foundation
The Andrew W. Mellon Foundation
Fund For Opera & Music-Theater
Bruce C. Ratner
The Peter Jay Sharp Fund for Opera and Theater
The SHS Foundation
The Starr Foundation

\$500,000 AND ABOVE

The Campbell Family Foundation
The Devitre Fund
Michael Bancroft Goth Endowed Annual
Performance Fund
Charles J. & Irene F. Hamm
Diane & Adam E. Max
Mary & Jim Ottaway Jr. in honor of
Ruth Blackburne Ottaway
Rockefeller Brothers Fund
Jonathan F.P. & Diana V.C. Rose
Martha A. & Robert S. Rubin
Estate of William Boss Sandberg
Nora Ann Wallace & Jack Nusbaum

\$250,000 AND ABOVE

The Bohlen Foundation

The Jessica E. Smith and Kevin R.
Brine Charitable Trust
The Irene Diamond Fund
The Charles & Valerie Diker Dance
Endowment Fund
The Horace W. Goldsmith Foundation
William Randolph Hearst
Endowment for Education and
Humanities Programs
Alex Hillman Family Foundation
Carole & Irwin Lainoff
Maxwell Family Fund in Community
Funds, Inc.

\$100,000 AND ABOVE

Michael Bailkin, Marvin Levine,
Jesse Masyr, David Stadtmauer
Estate of Madison S. Finlay
Francena T. Harrison Performance
Fund
Estate of Rita K. Hillman
Independence Community Bank
Stephanie & Tim Ingrassia
Mr. & Mrs. Edgar A. Lampert
Annie Leibovitz & Studio
Leo Burnett, USA
James McLaren & Lawton Fitt
Sarah G. Miller & Frank L. Coulson
The Morgan Stanley Community and
Educational Fund
J.P. Morgan & Co. Incorporated
The Jerome Robbins Foundation, Inc.
May & Samuel Rudin Family
Foundation
Mr. & Mrs. Ame Vennema
Verizon Communications
The Isak and Rose Weinman
Foundation in honor of Madame
Lilliana Teruzzi
The Norman & Rosita Winston Foundation

As of January 1, 2009

BAM ENDOWMENT TRUST BOARD OF TRUSTEES

BAM ENDOWMENT TRUST CHAIR

Timothy J. Ingrassia

VICE CHAIR

Norman L. Peck

TREASURER

Keith Stubblefield

MEMBERS

Susan L. Baker
Henry Christensen III, Ex Officio
Dinyar S. Devitre
William A. Douglass
Elizabeth Holtzman
James I. McLaren
R. Edward Spilka
Nora Ann Wallace
Alan H. Fishman, Ex Officio

PLANNED GIVING—BAM ANGELS

BAM Angels recognizes individuals who have included BAM in their wills or arranged other planned gifts benefiting BAM. For more information contact Denis Azaro in the BAM Planning Office at 718-636-4138, x2.

Denis Azaro
Estate of Bettina Bancroft
Robert & Joan Catell
Neil D. Chrisman
Mr. & Mrs. Henry Christensen III
Mallory Factor
Estate of Madison S. Finlay
Estate of Richard B. Fisher
Judith R. & Alan H. Fishman
Estate of Rita Hillman
William Josephson
Charlotte & Stanley Kriegel
Edgar A. Lampert

Harvey Lichtenstein
Phyllis Holbrook Lichtenstein
Scott C. McDonald
Evelyn & Everett Ortner
Frank J. & Adeline Pannizzo
Estate of William Boss Sandberg
Estate of Harriet L. Senz
Estate of Sidney Shanker
Estate of Toni Mendez Shapiro
Lynn M. Stirrup
Alex Wagman
Judge Franklin R. Weissberg



The Peter Jay Sharp building on Lafayette Avenue. Photo: Andrew Nicholas

**BAM ENDOWMENT TRUST STATEMENTS OF
FINANCIAL POSITION
As of June 30, 2008 & 2007**

ASSETS	2008	2007
Cash and cash equivalents	\$12,739,551	\$3,192,525
Interest receivable	9,215	7,526
Pledges receivable	11,981,049	11,660,747
Subtotal noninvestments	24,729,815	14,860,798
INVESTMENTS:		
Select Equity Group Asset Management	6,343,110	7,626,012
Iridian Private Business Value Equity Fund, L.P.	8,470,087	8,714,133
Neuberger Berman Straus Group	7,670,475	8,644,350
Sire Partners, L.P.	10,561,042	10,143,243
Berens Capital Fund, Ltd	-	565,204
Satellite Overseas Fund, Ltd	5,740,939	5,999,019
OZ Overseas Fund II, Ltd	6,513,545	6,322,249
Janus Advisor Forty Fund	5,625,525	3,133,062
Janus Adviser Intech Risk-Managed Growth Fund	2,803,879	3,020,855
Francis Fisher Tree & Watts Fund	-	2,021,670
Pooled Income Fund	104,307	110,537
Subtotal investments	53,832,909	56,300,334
TOTAL ASSETS	\$78,562,724	\$71,161,132
LIABILITIES:		
Accounts payable	\$17,345	\$42,516
Due to the Brooklyn Academy of Music, Inc.	957,836	24,850
Pooled income fund liabilities	38,051	39,304
TOTAL LIABILITIES	\$1,013,232	\$106,670
COMMITMENTS		
NET ASSETS		
Unrestricted – board discretionary	\$7,689,461	\$8,489,902
Temporarily restricted - pooled income fund	196,649	2,787,716
Permanently restricted	69,663,382	59,776,844
TOTAL NET ASSETS	\$77,549,492	\$71,054,462
TOTAL LIABILITIES AND NET ASSETS	\$78,562,724	\$71,161,132

BET's financial statements are audited by Marks Paneth & Shron LLP. The summarized Statements of Financial Position as of June 30, 2007 and 2006, and Statements of Activities for the years ended June 30, 2007 and 2006 were derived from BET's financial statements. The complete audited financial statements are available at www.guidestar.org, or by writing to the NYS Charities Bureau at 120 Broadway, New York, NY 10005.

BAM ENDOWMENT TRUST STATEMENTS OF FINANCIAL POSITION
For the Years Ended June 30, 2008 & 2007

	2008 Unrestricted	Temporarily Restricted	Permanently Restricted	2008 Total	2007 Unrestricted	Temporarily Restricted	Permanently Restricted	2007 Total
REVENUES AND OTHER SUPPORT								
Contributions	\$125,000	\$ -	\$9,886,538	\$10,011,53	\$ -	\$ -	\$6,805,194	\$6,805,194
Interest and dividends	304,396	238,066	-	542,462	361,788	311,994	-	673,782
Miscellaneous income	3,115	2,457	-	5,572	579	499	-	1,078
Change in pooled income fund	-	1,253	-	1,253	-	1,557	-	1,557
Total revenues and other support	432,511	241,776	9,886,538	10,560,825	362,367	314,050	6,805,194	7,481,611
Net assets released from restrictions	2,200,808	(2,200,808)	-	-	1,940,896	(1,940,896)	-	-
TOTAL REVENUES AND GAINS	\$2,633,319	(\$1,959,032)	\$9,886,538	\$10,560,825	\$2,303,263	(\$1,626,846)	\$6,805,194	\$7,481,611
EXPENSES								
Distribution - The Brooklyn Academy of Music, Inc.	\$2,200,808	-	-	\$2,200,808	\$1,940,896	-	-	\$1,940,896
Investment fees	423,988	-	-	423,988	365,041	-	-	365,041
Audit, insurance and filing fees	21,868	-	-	21,868	27,650	-	-	27,650
TOTAL EXPENSES	\$2,646,664	-	-	\$2,646,664	\$2,333,587	-	-	\$2,333,587
RESULTS OF OPERATIONS	(\$13,345)	(\$1,959,032)	\$9,886,538	\$7,914,161	(\$30,324)	(\$1,626,846)	\$6,805,194	\$5,148,024
CHANGE IN UNREALIZED GAINS ON INVESTMENTS	(1,763,022)	(1,401,885)	-	(3,164,907)	3,111,743	2,690,944	-	5,802,687
REALIZED GAINS ON INVESTMENTS	975,926	769,850	-	1,745,776	1,481,988	1,278,023	-	2,760,011
CHANGE IN NET ASSETS	(800,441)	(2,591,067)	9,886,538	6,495,030	4,563,407	2,342,121	6,805,194	13,710,722
Net assets - beginning of year	8,489,902	2,787,716	59,776,844	71,054,462	3,926,495	445,595	52,971,650	57,343,740
NET ASSETS - END OF YEAR	\$7,689,461	\$196,649	\$69,663,382	\$77,549,492	\$8,489,902	\$2,787,716	\$59,776,844	\$71,054,462